

2016 MFS soil tests

Phil Graham

Introducing P index

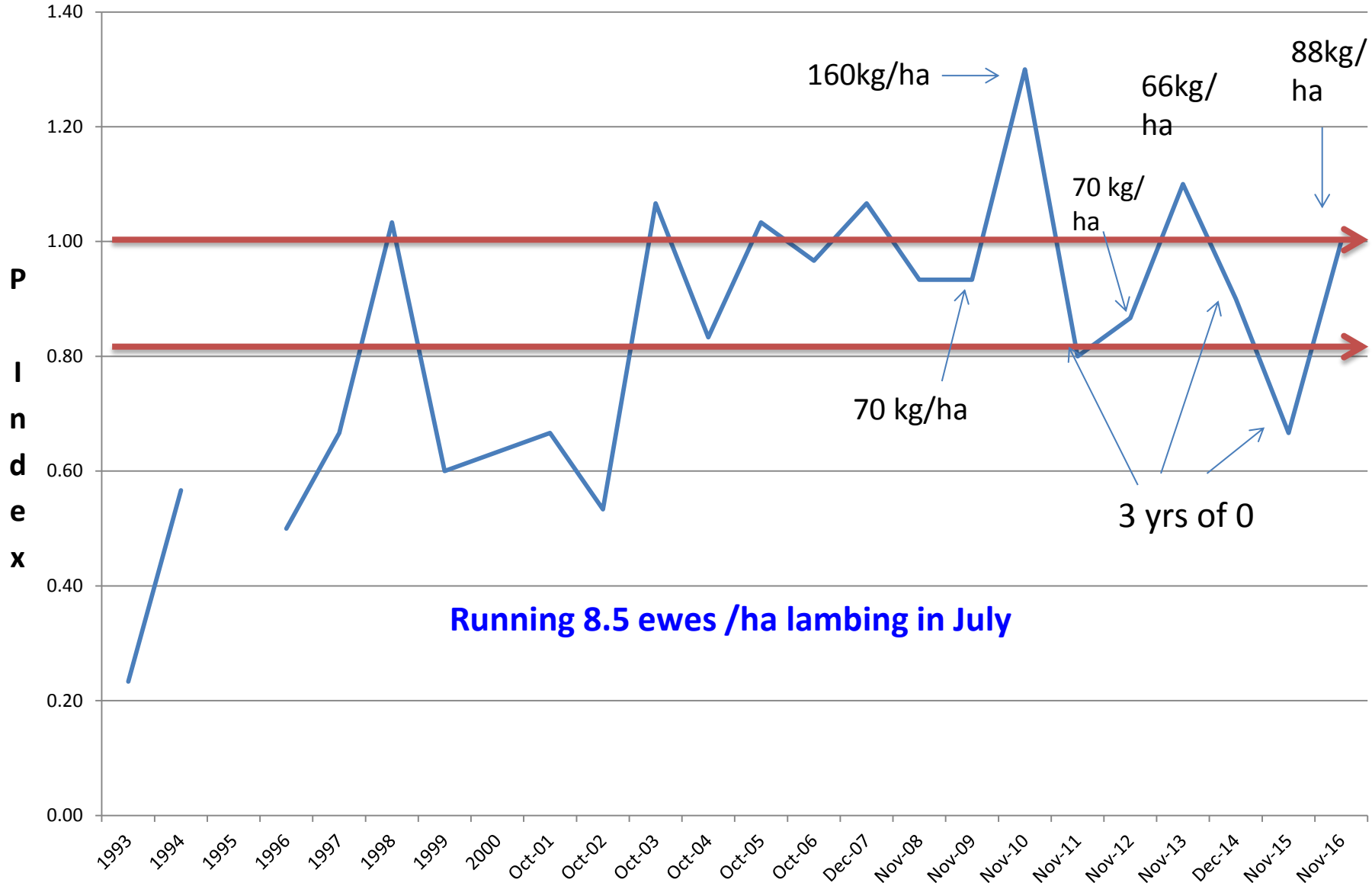
- Richard Simpson come up with the P index to make graphing easier.
- How do we get it?
- Divide your **Colwell P** by **Critical P** we get from the PBI number.
- Eg Hill paddock has colwell P of **19** and a critical P of **25**,

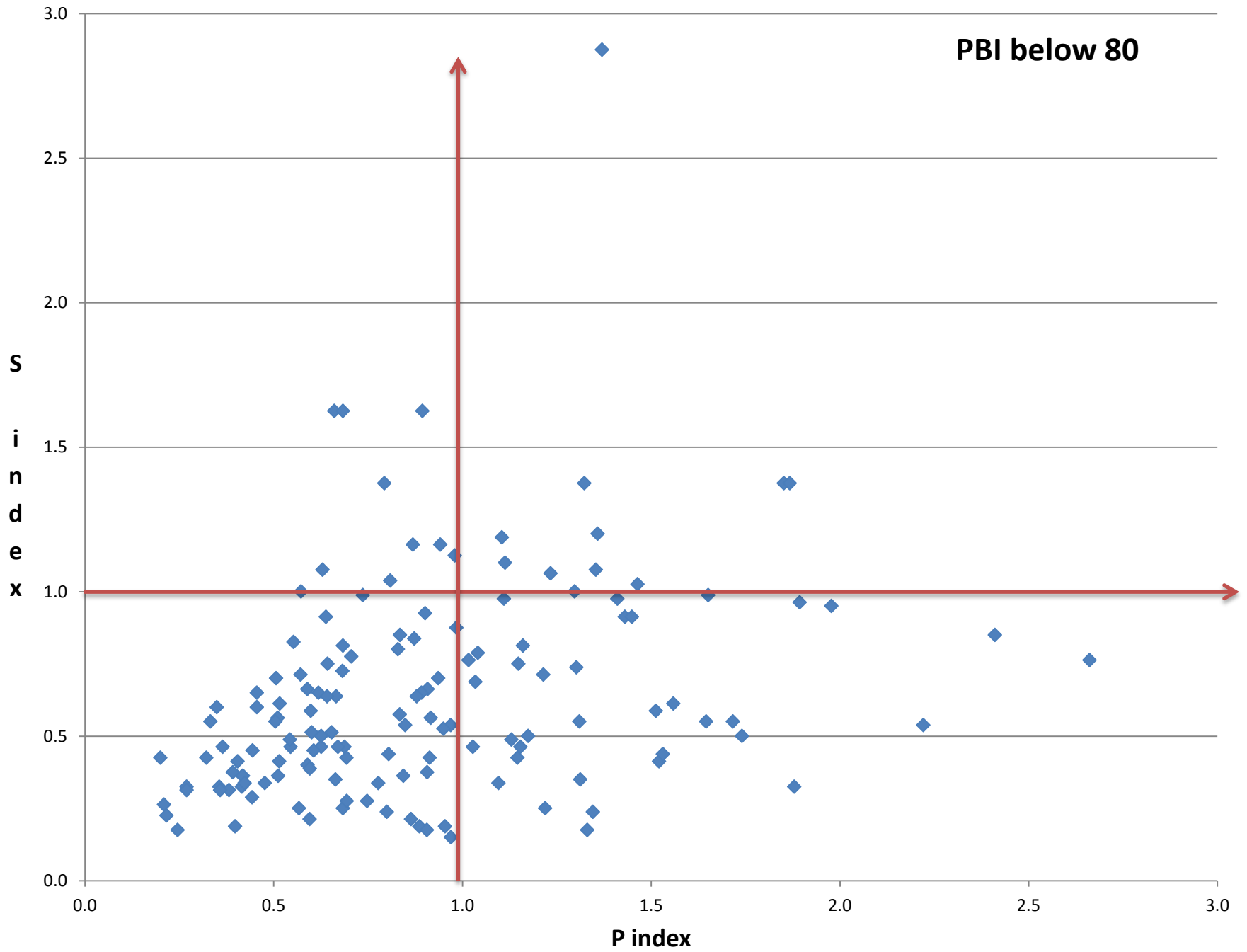
$$19/25 = 0.76$$

S Index

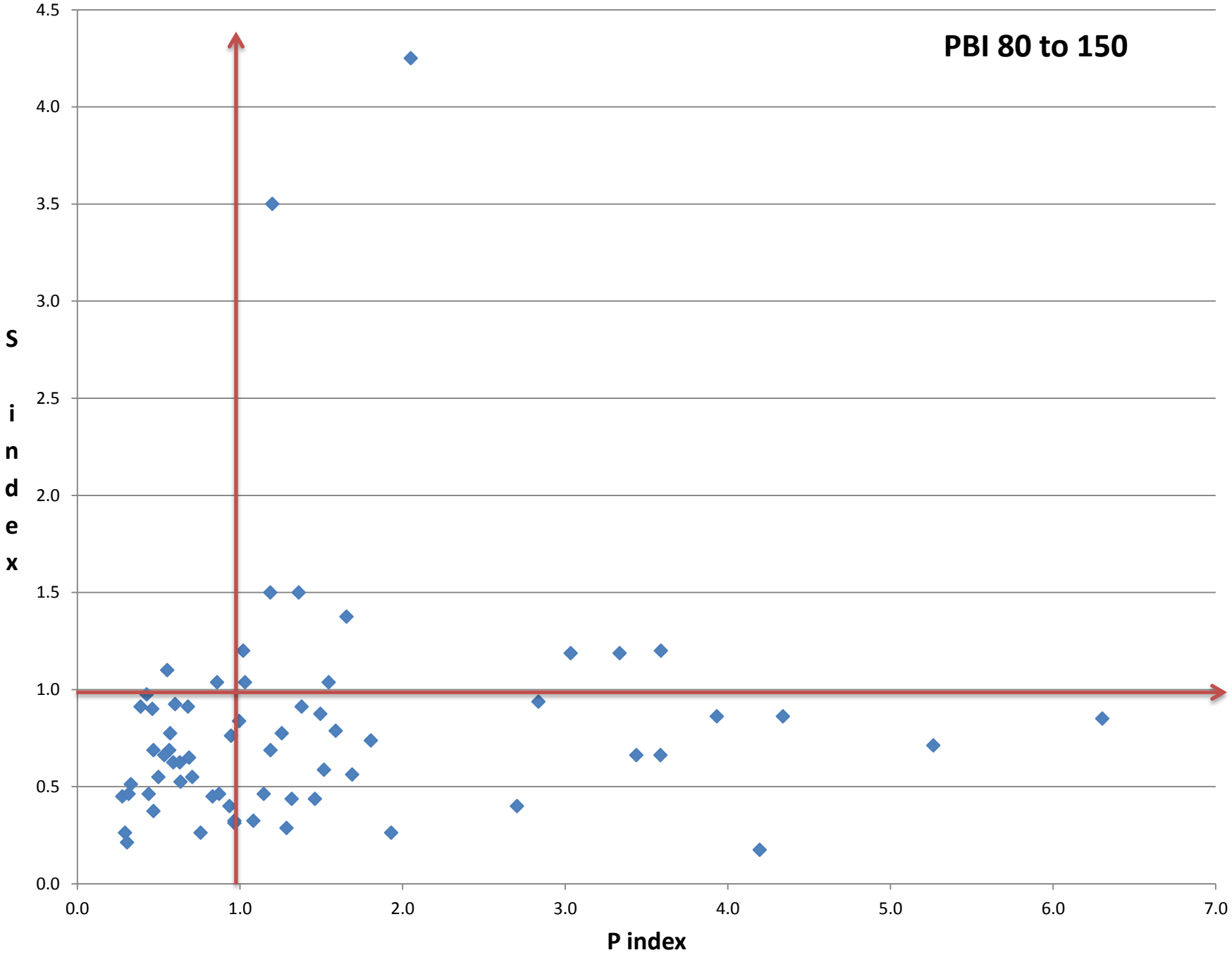
- With the S index we divide our S reading from the test by 8.
- Eg, 4.5 from test
- $4.5/8=0.56$

Example, managing the Bookham site

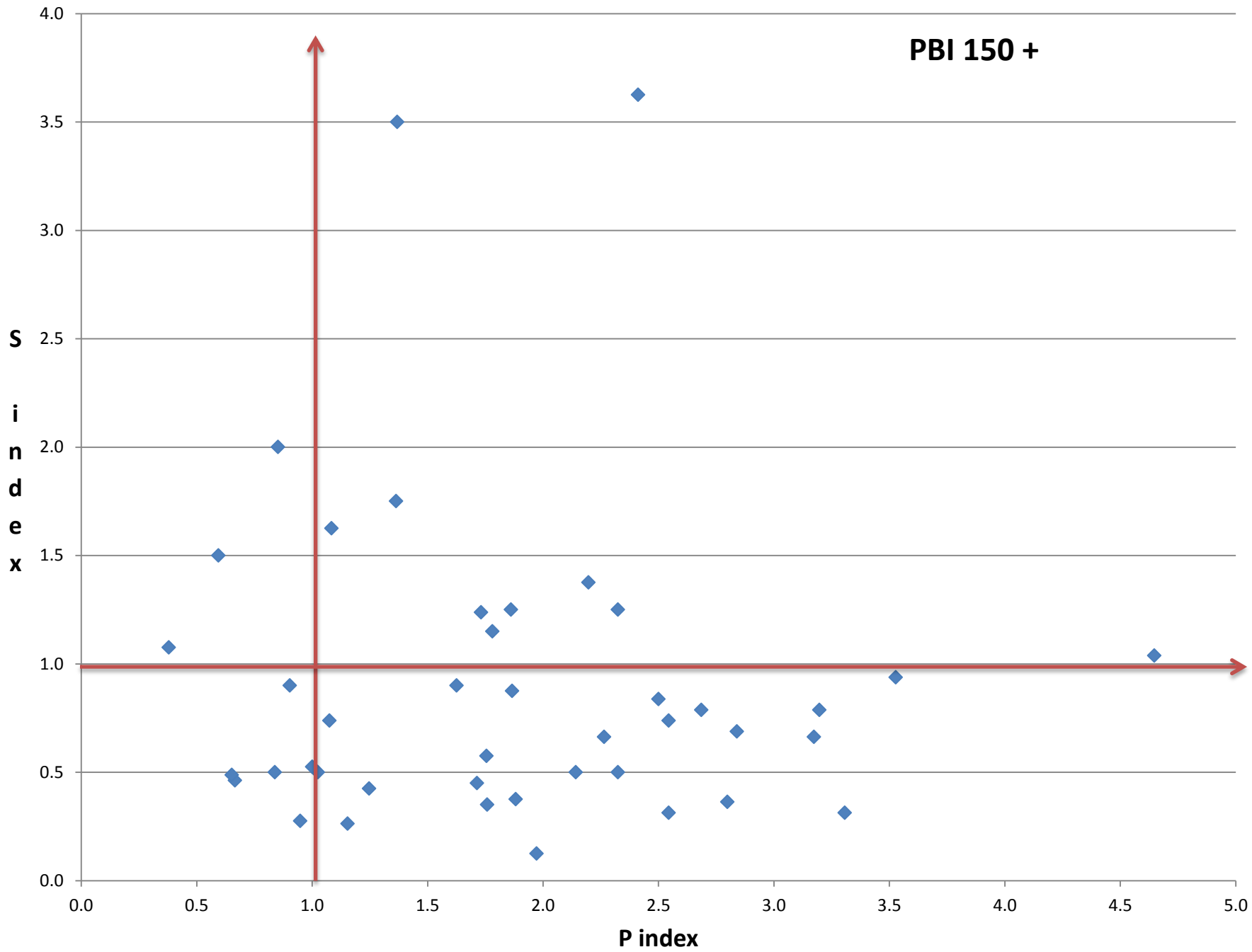


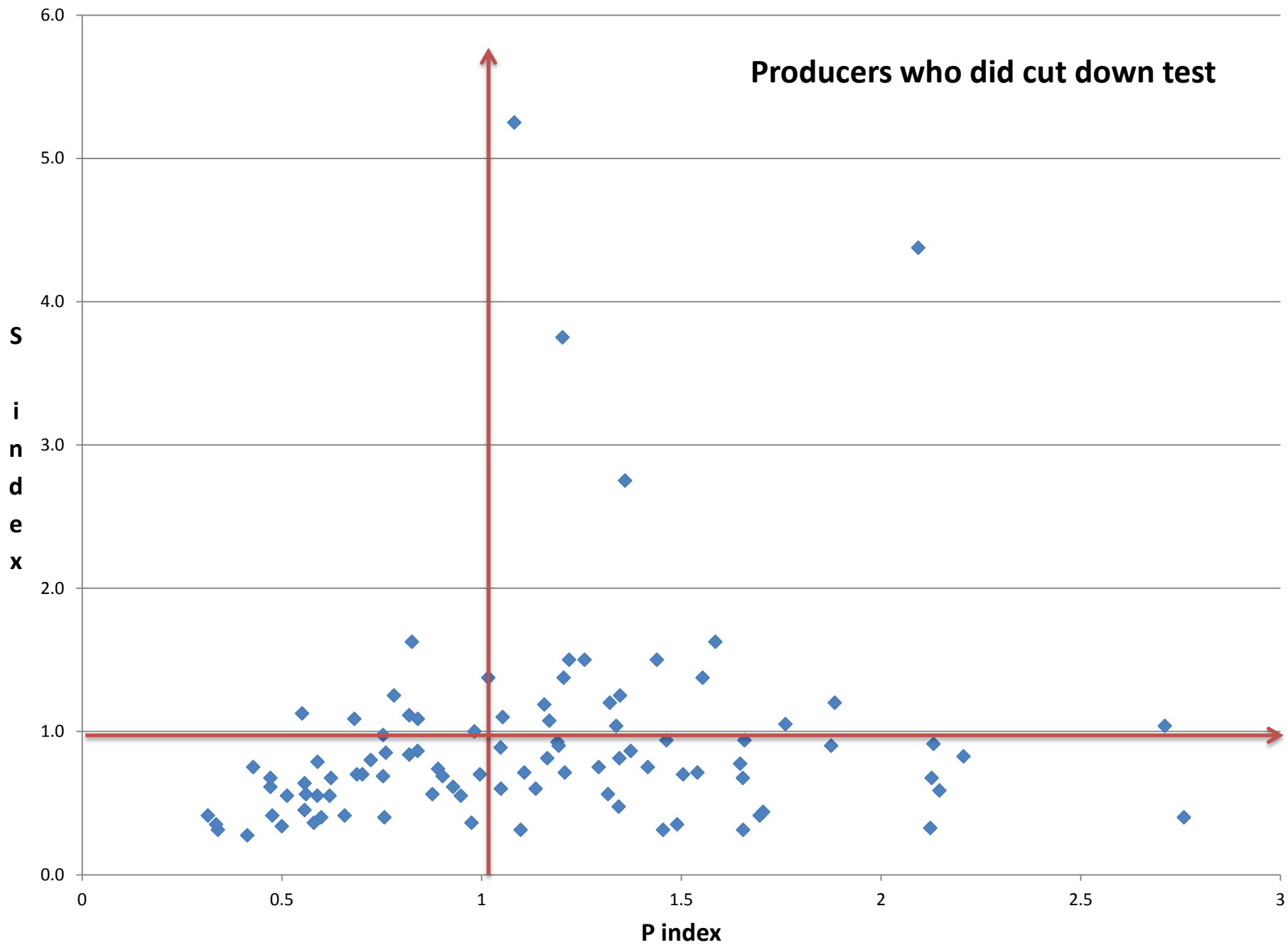


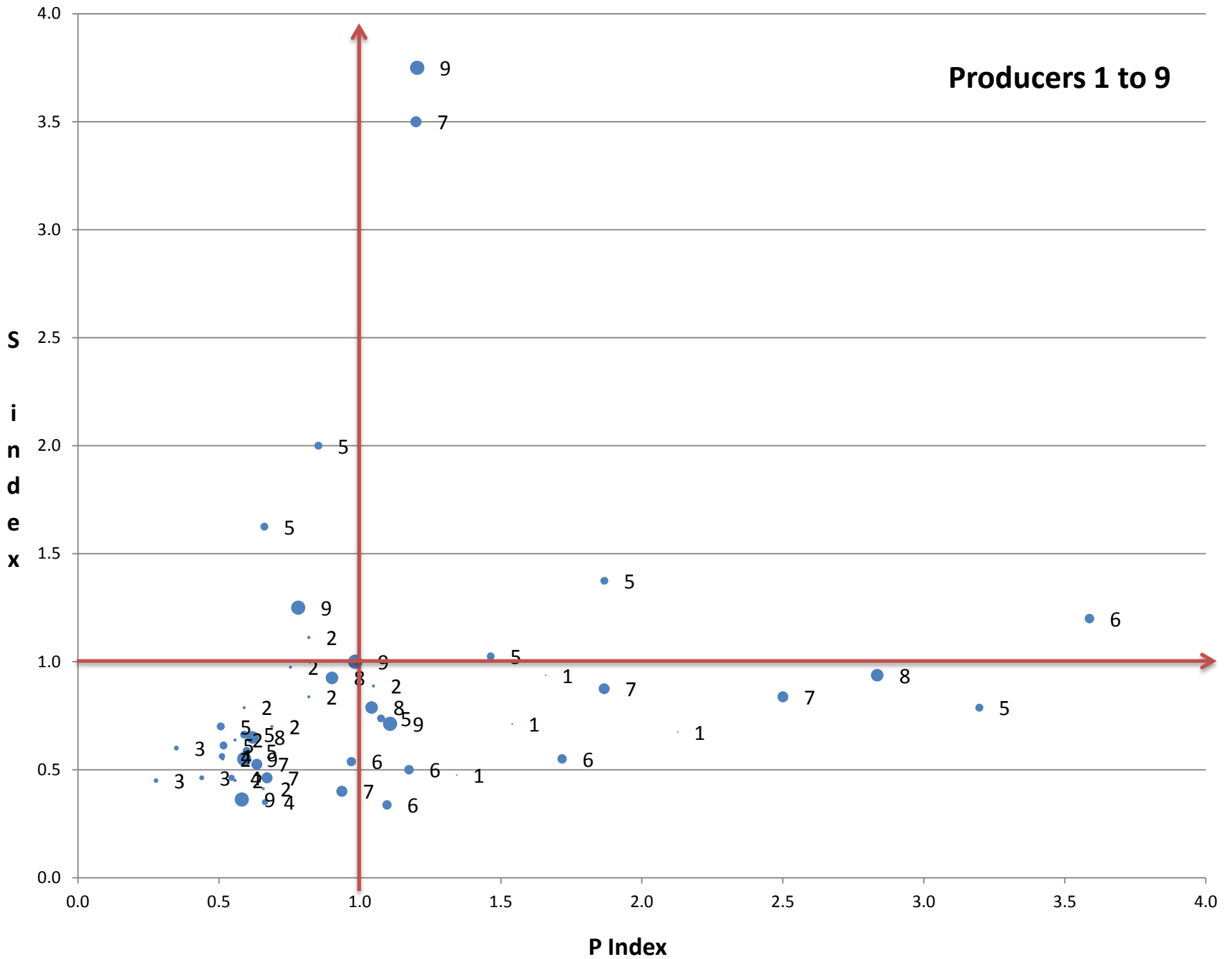
PBI 80 to 150



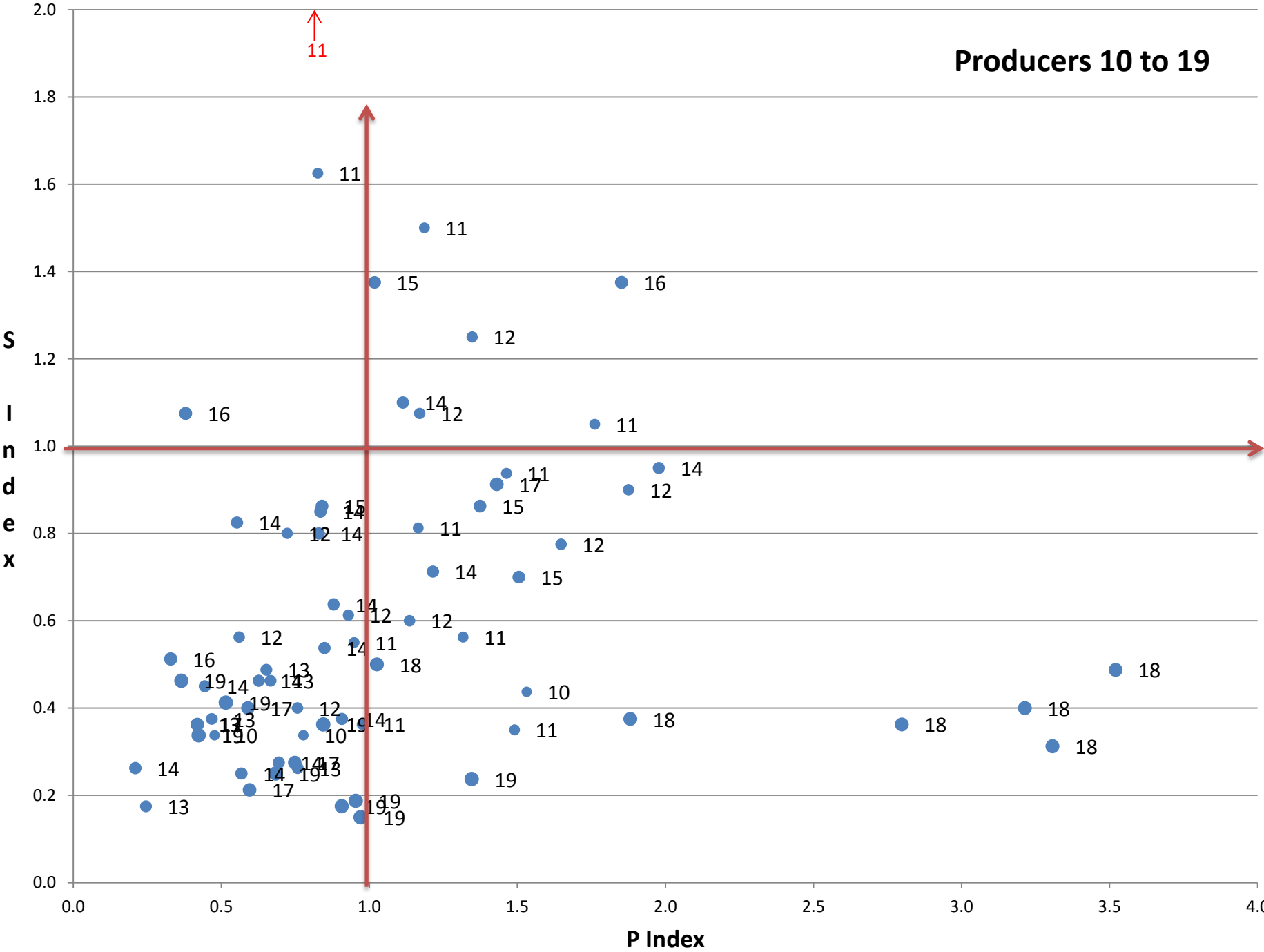
PBI 150 +

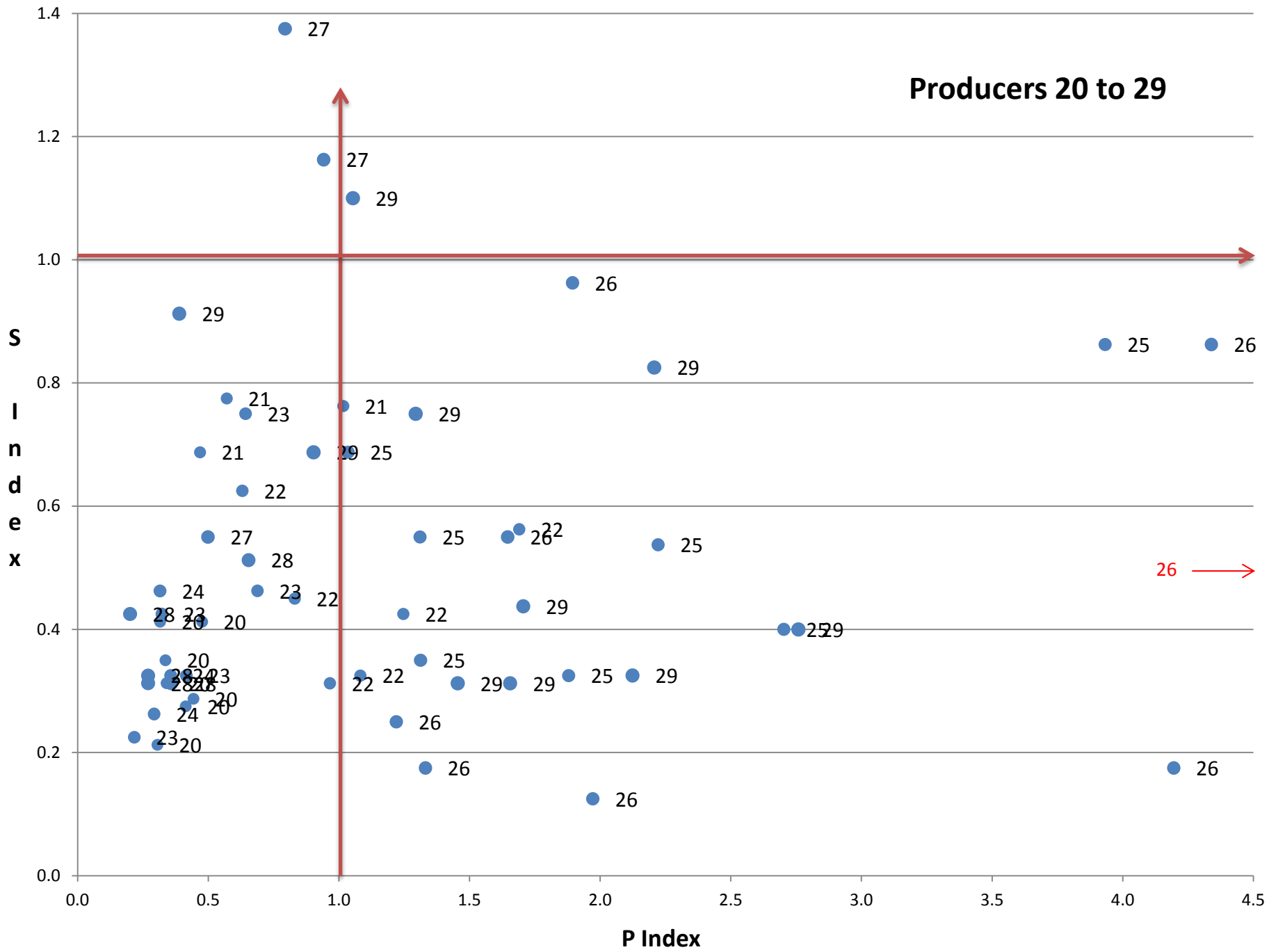




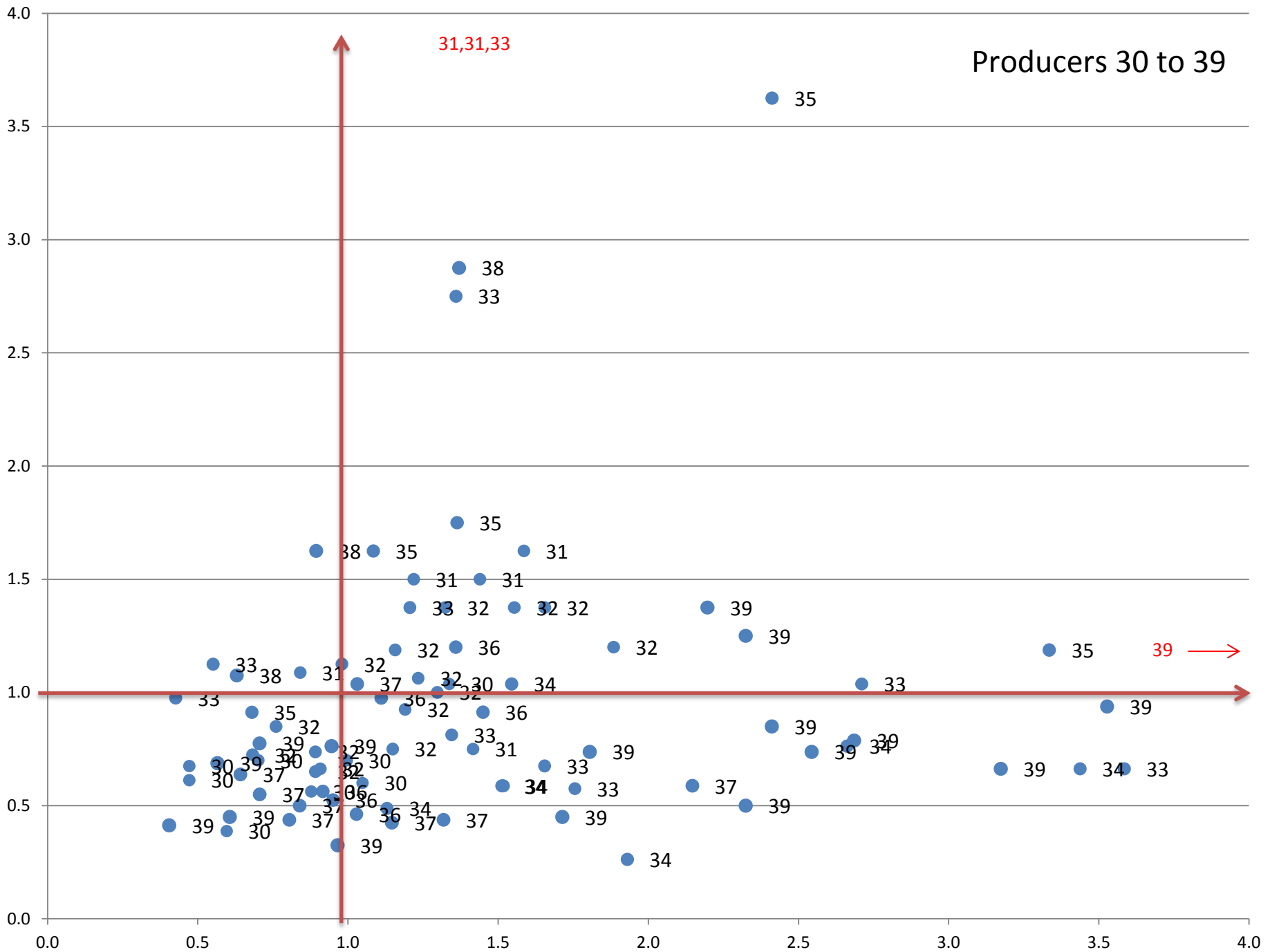


Producers 10 to 19

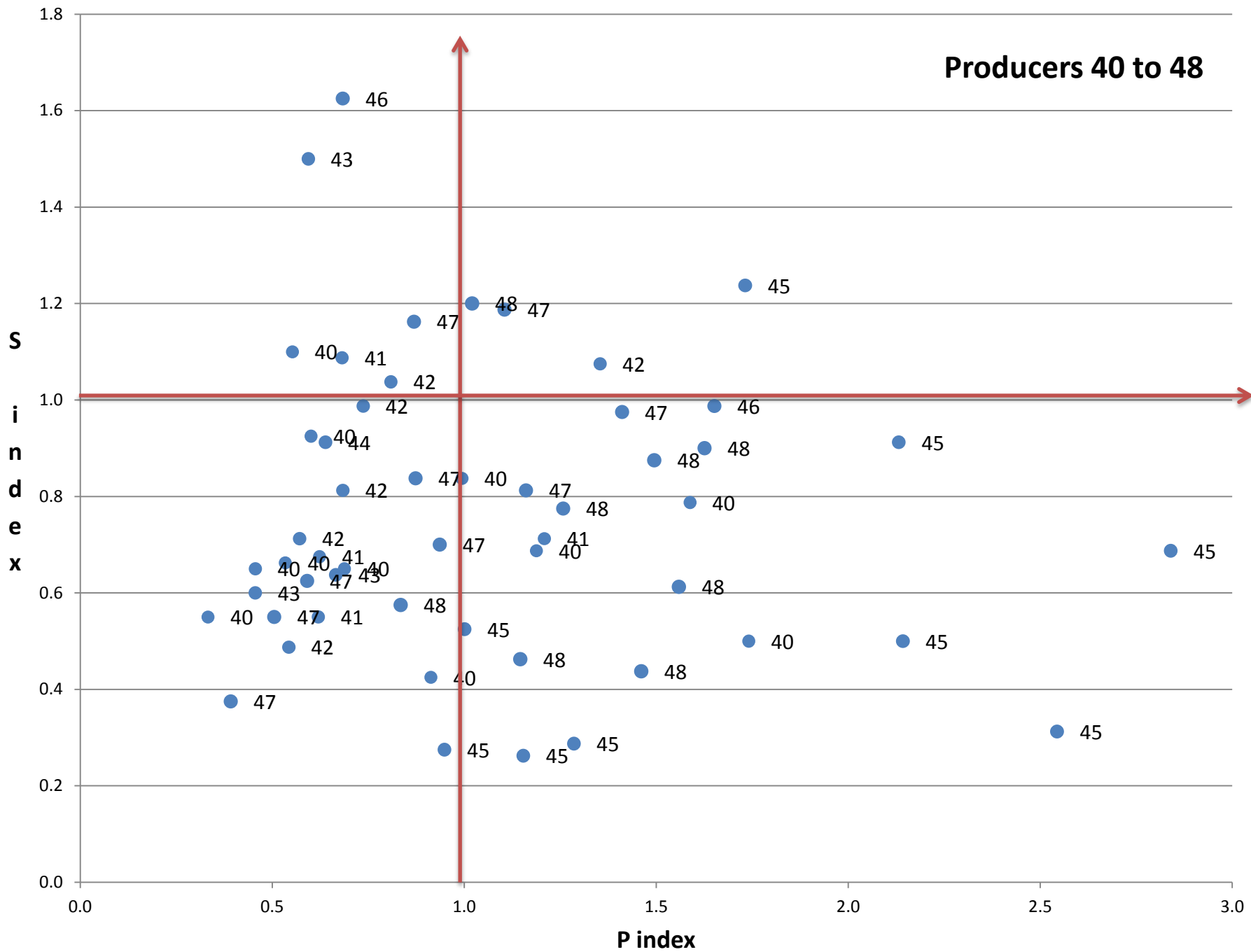




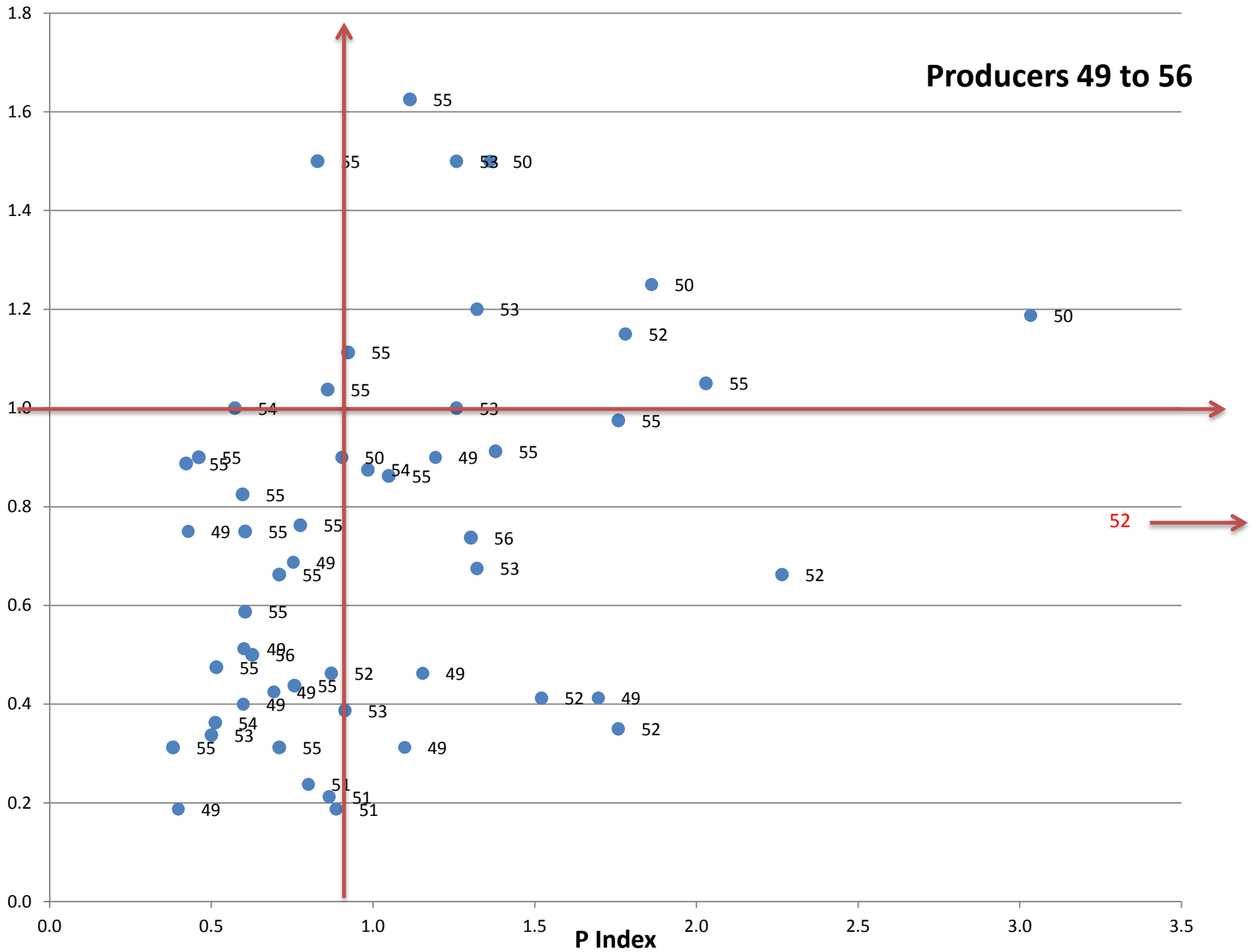
Producers 30 to 39



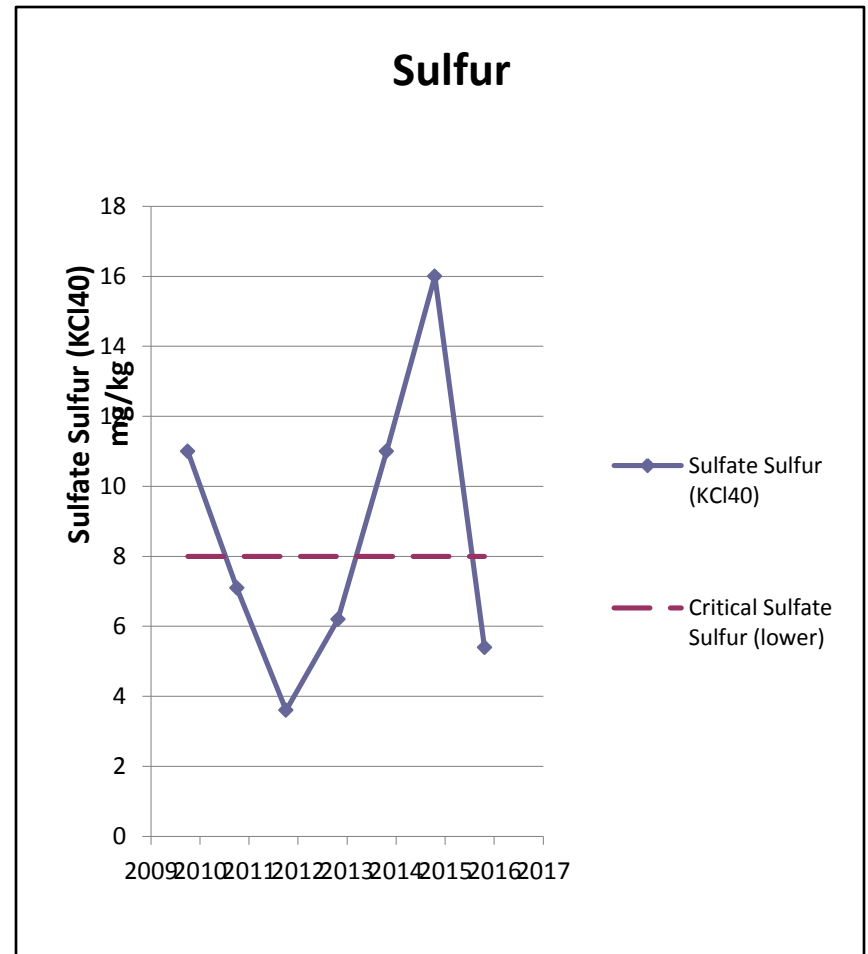
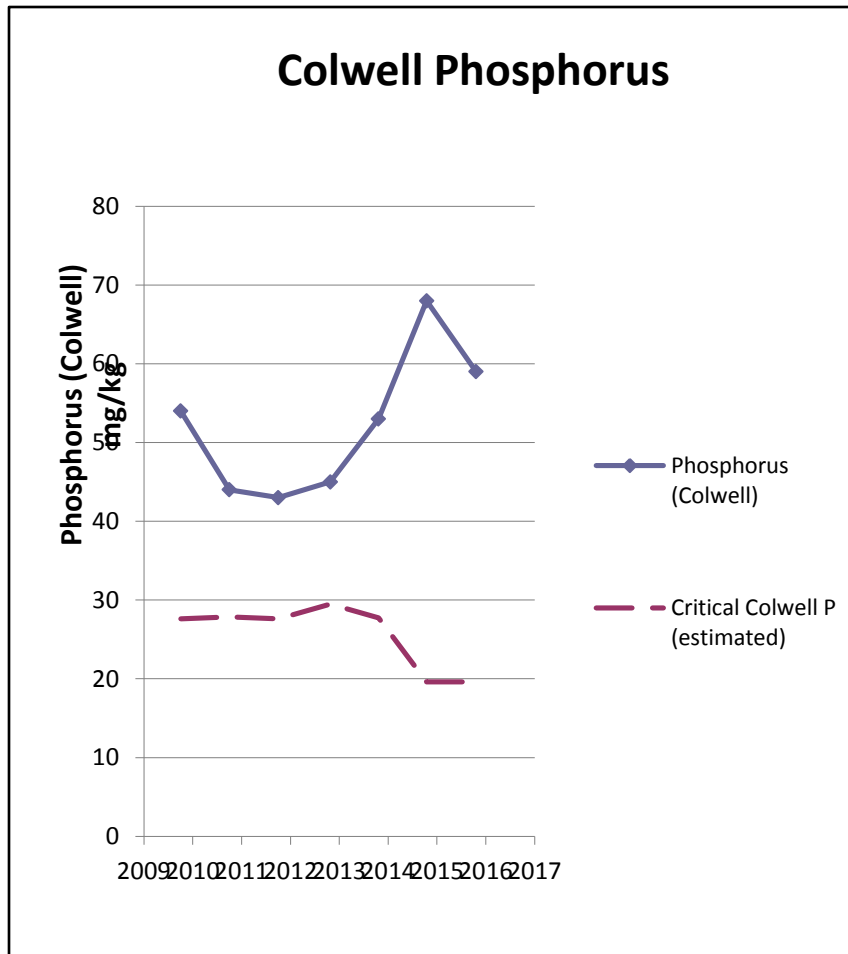
Producers 40 to 48



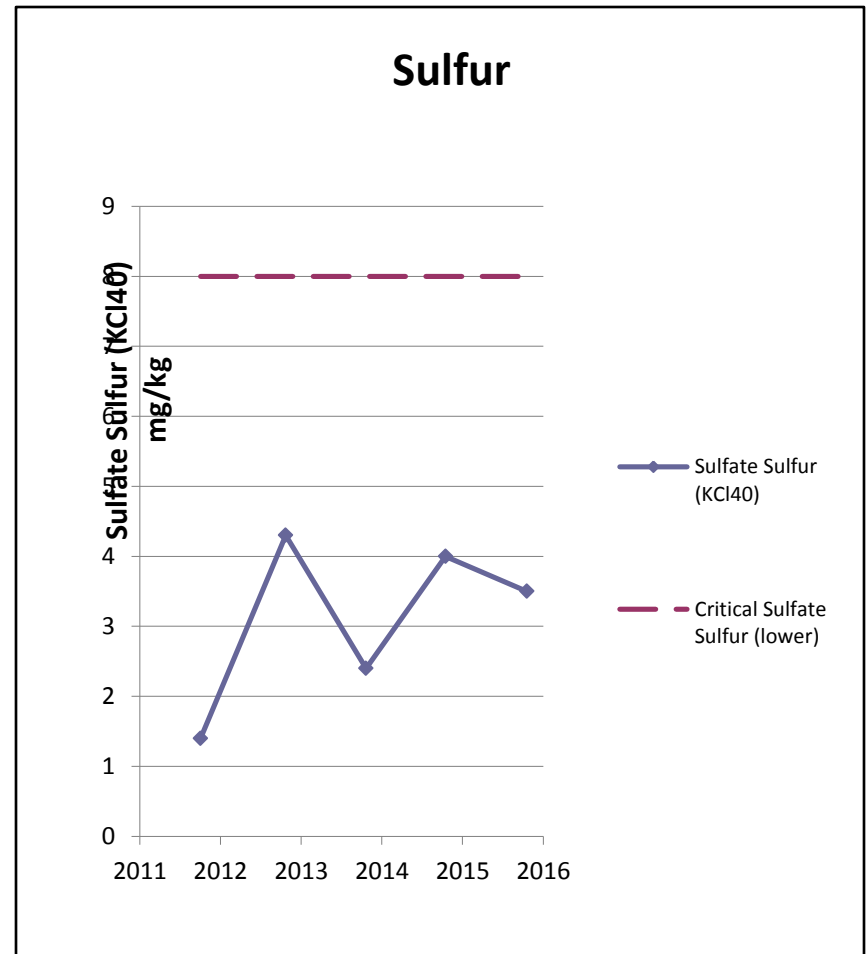
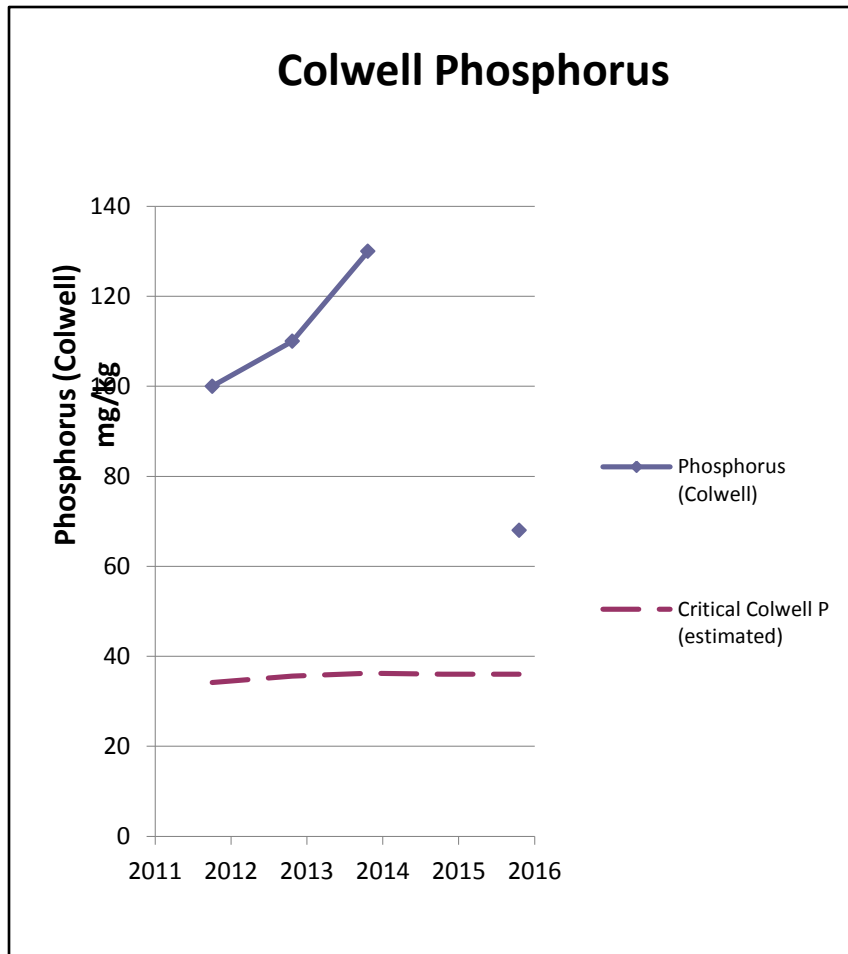
Producers 49 to 56



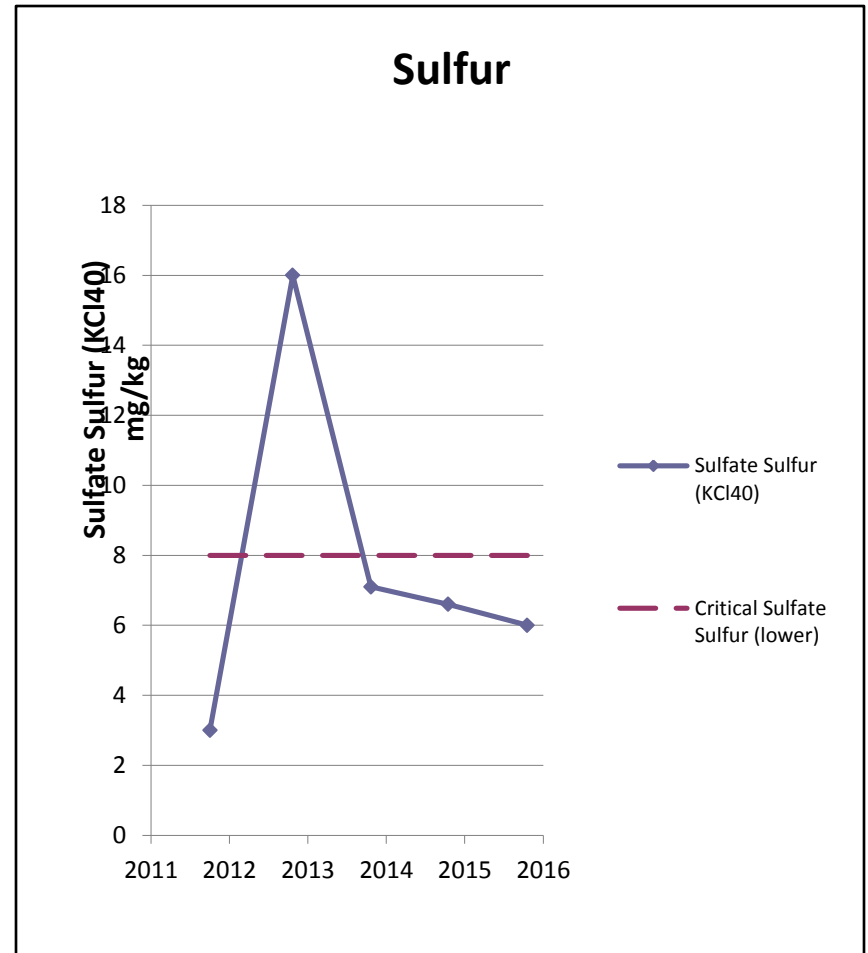
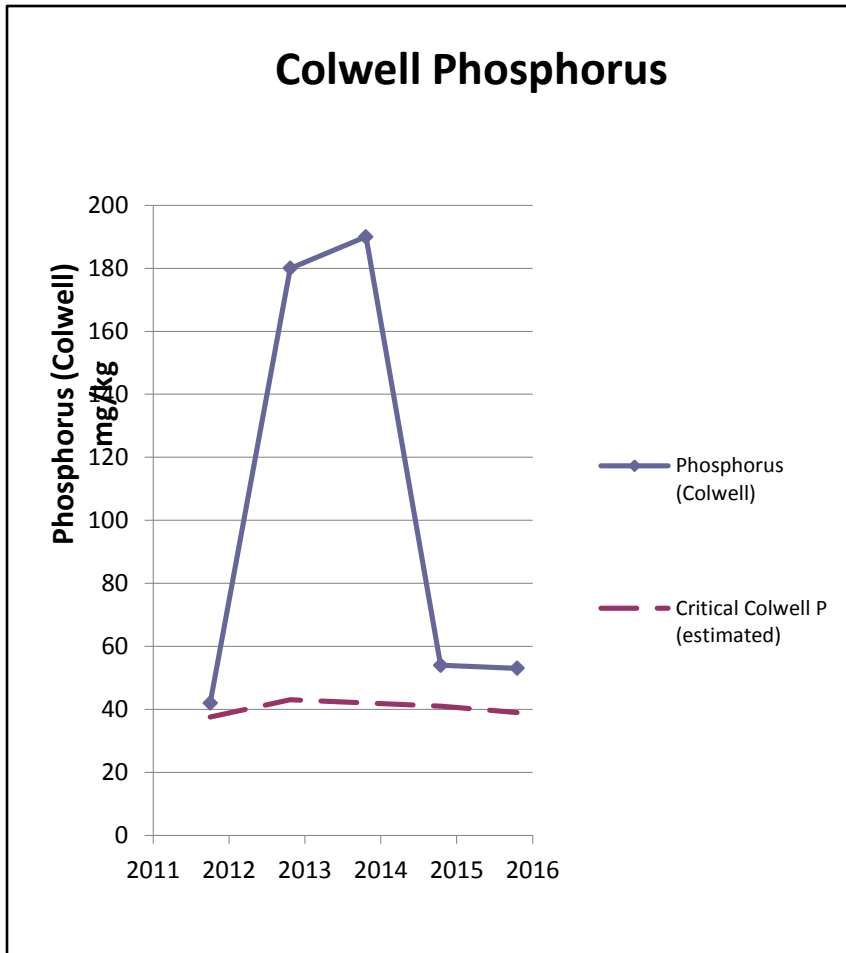
What decision would you make?



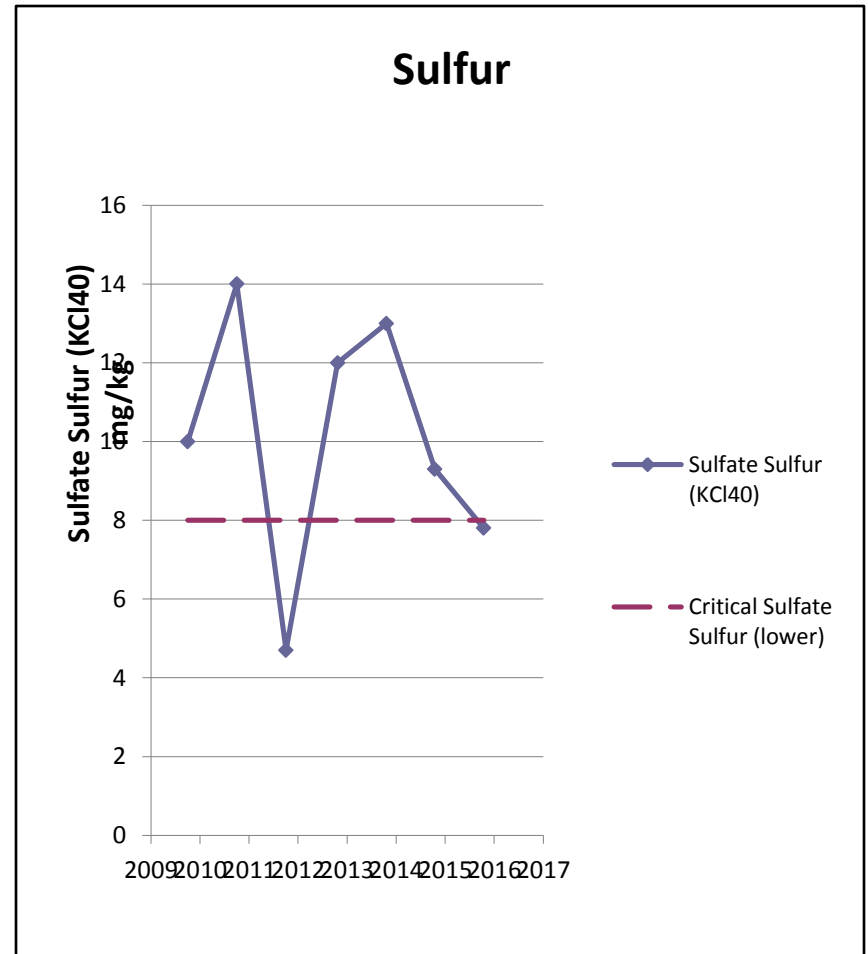
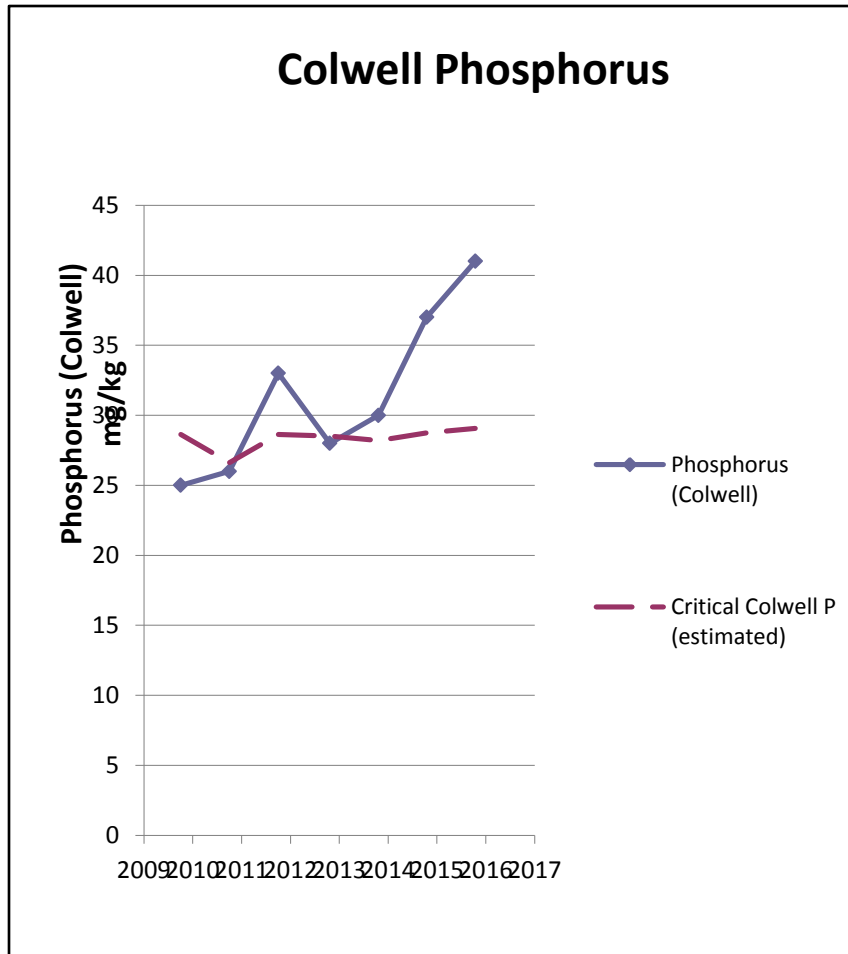
What decision would you make?



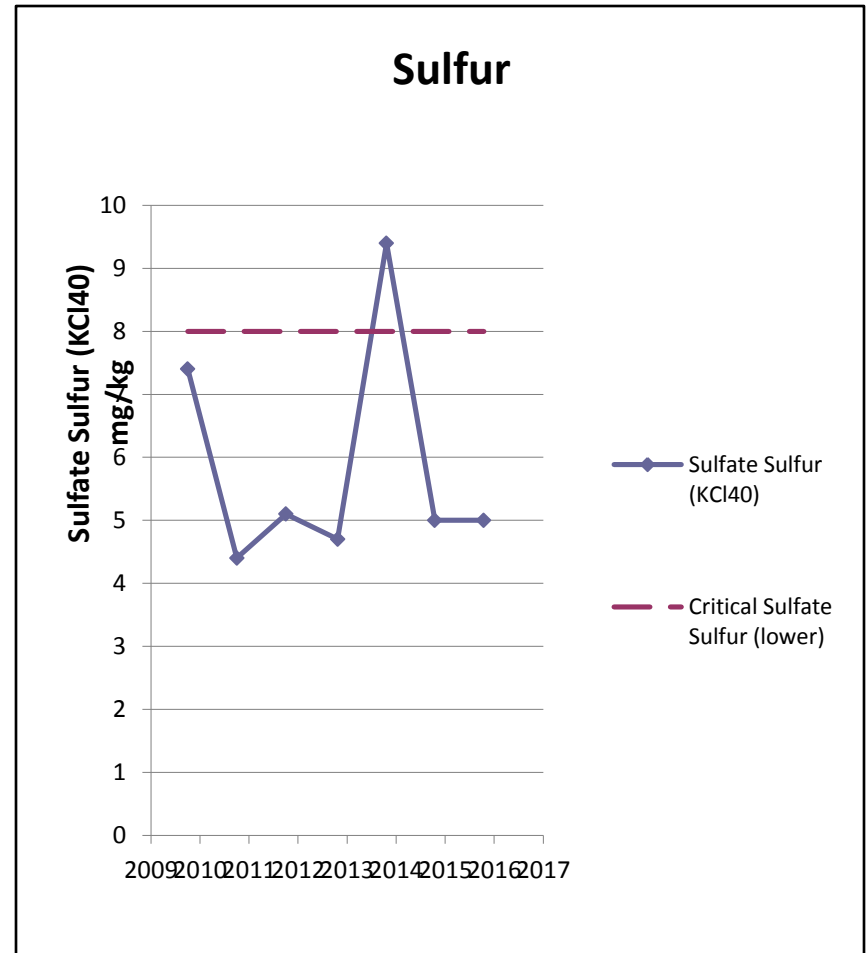
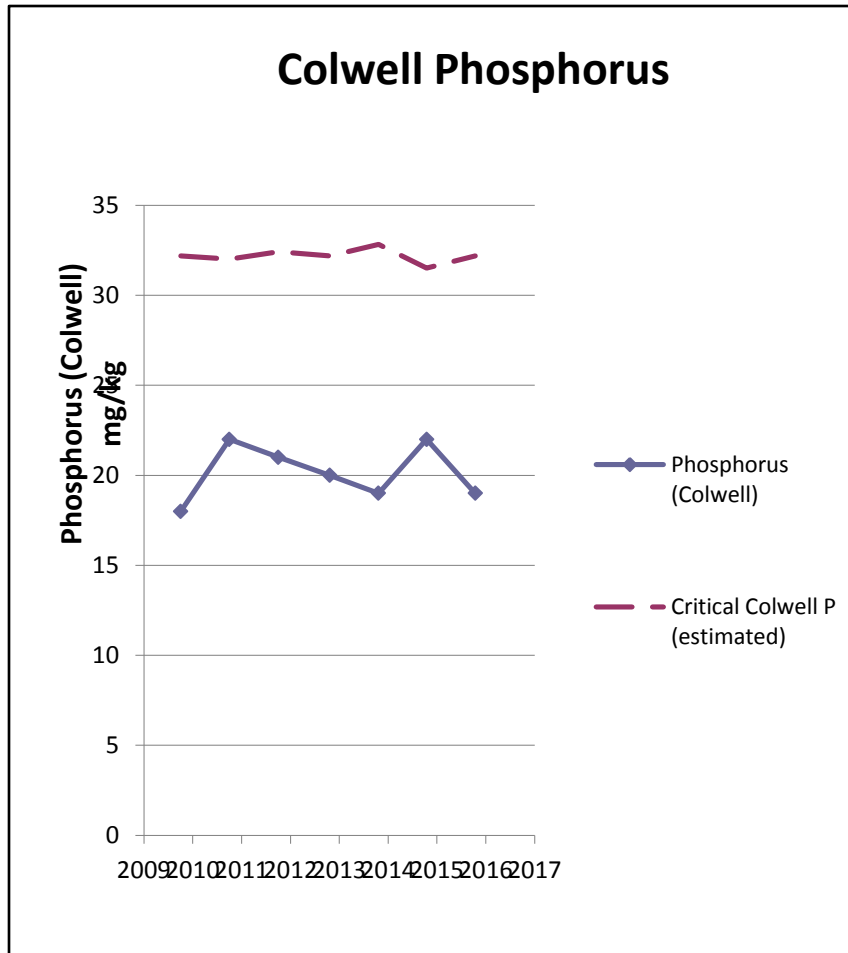
What decision would you make?



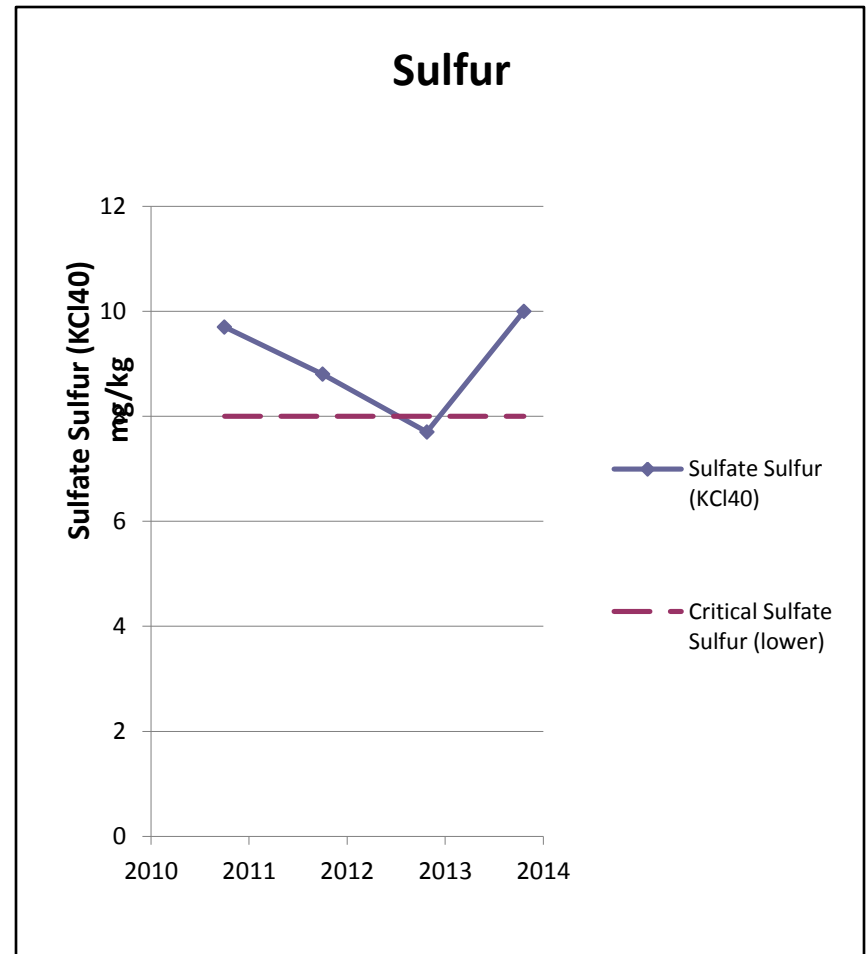
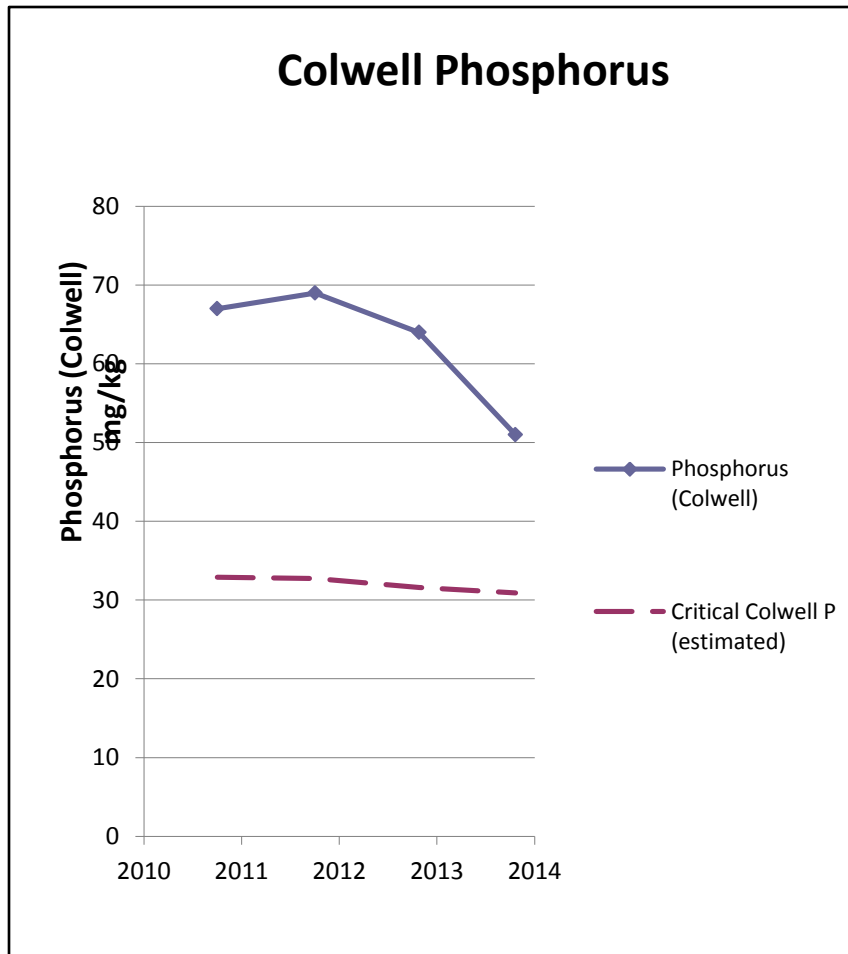
What decision would you make?



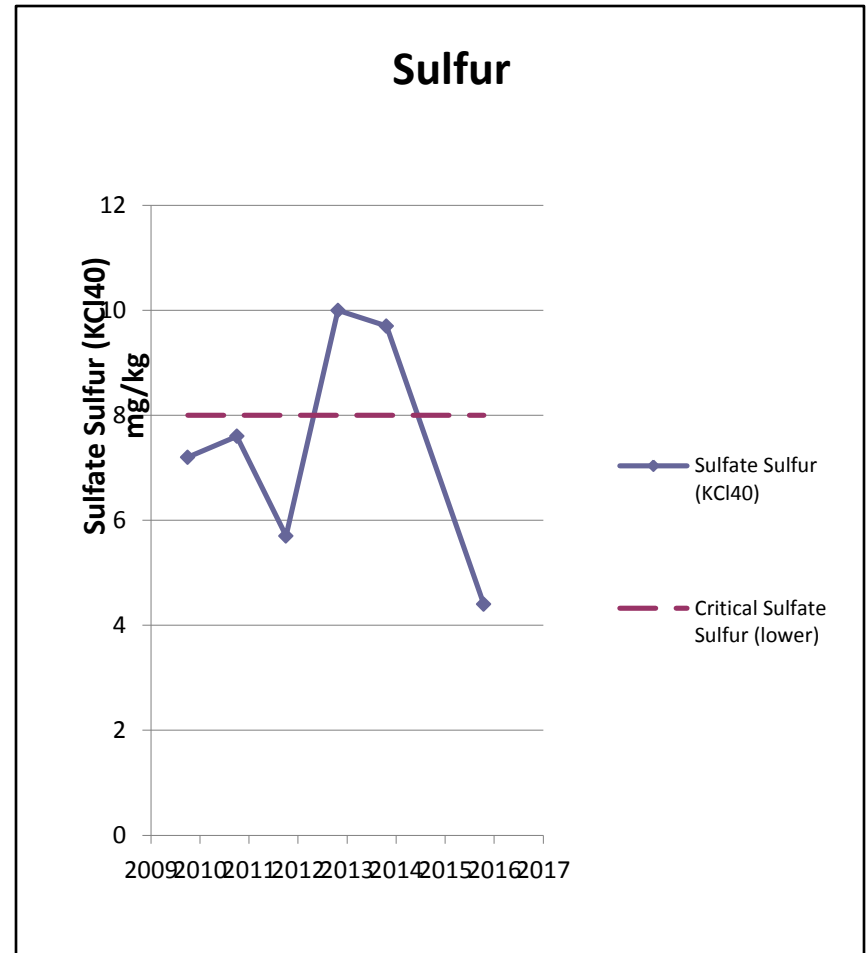
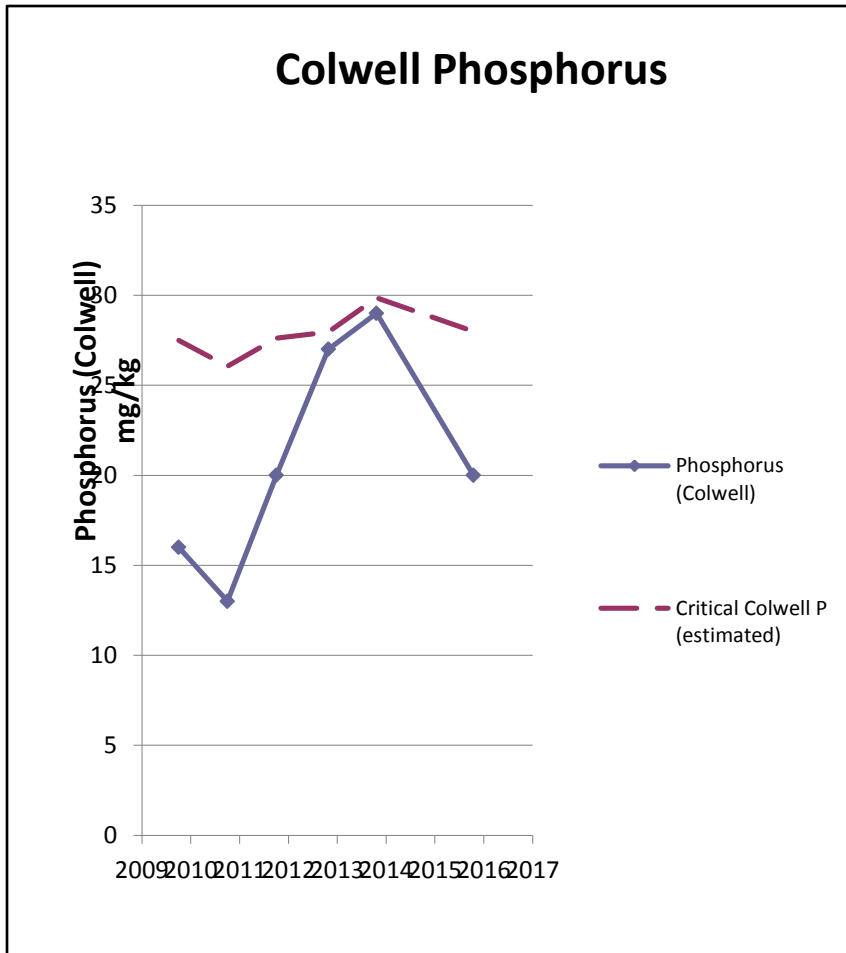
What decision would you make?



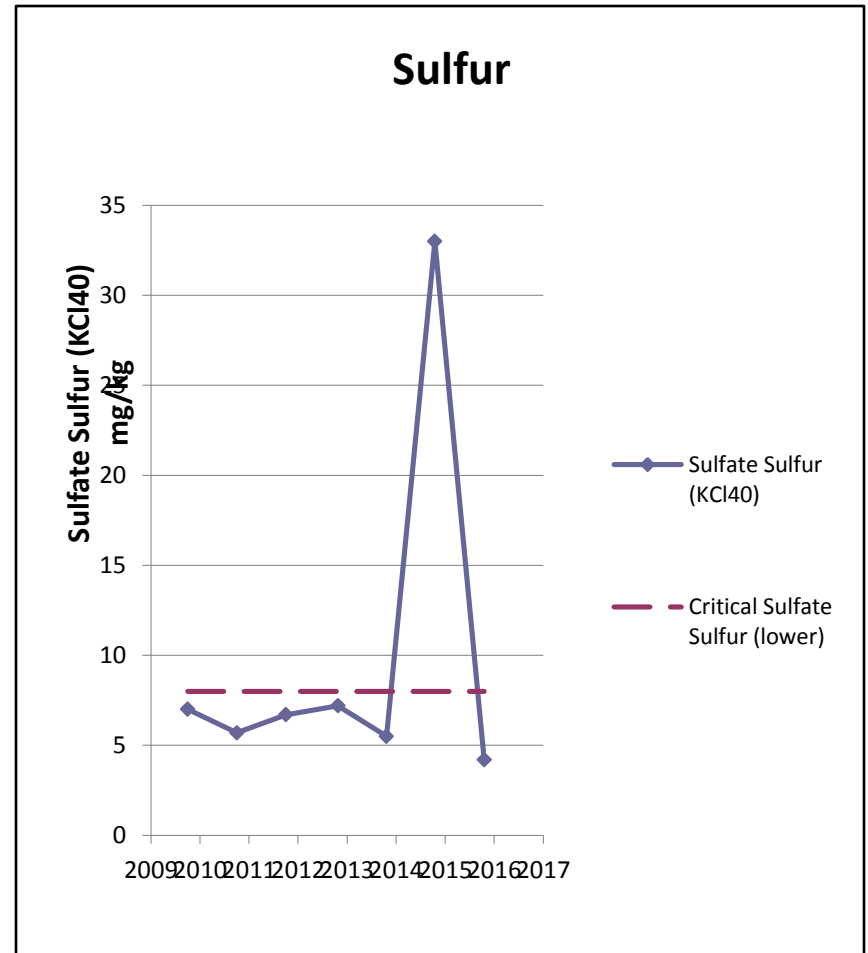
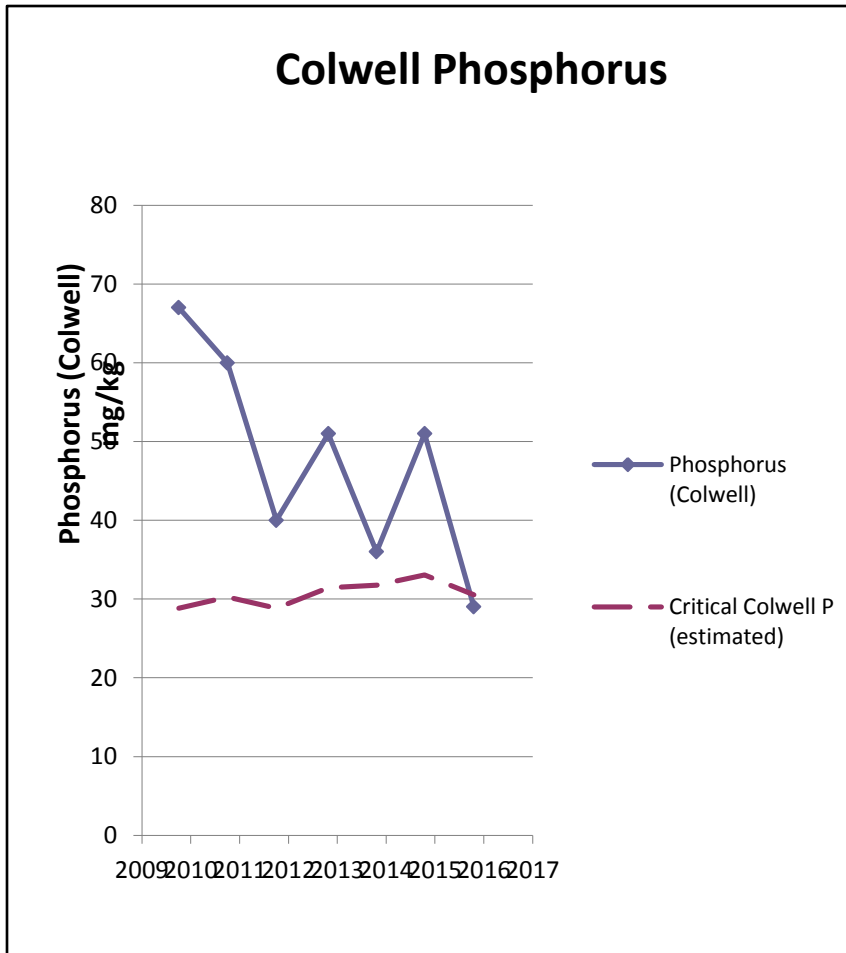
What decision would you make?



What decision would you make?



What decision would you make?



What decision would you make?

