

# Issues to think about re Spring

Phil Graham

Technical Specialist Livestock Systems

NSW Agriculture

YASS

# What is your stock's current condition?

- Yass
- Cattle **1 fat score above** average
- Sheep **0.5 to 0.75 above average**. Lower because we have been trying to keep it under control
- **What is your answer?**

# Average pasture mass at the start of spring – YASS trial

	KG DM /ha on 1 Sept
2007	<b>750</b>
2008	<b>600</b>
2009	<b>700</b>
2010	<b>1400</b>
2011	<b>900</b>
2012	<b>1150</b>
2013	<b>1000</b>
2014	<b>1500</b>

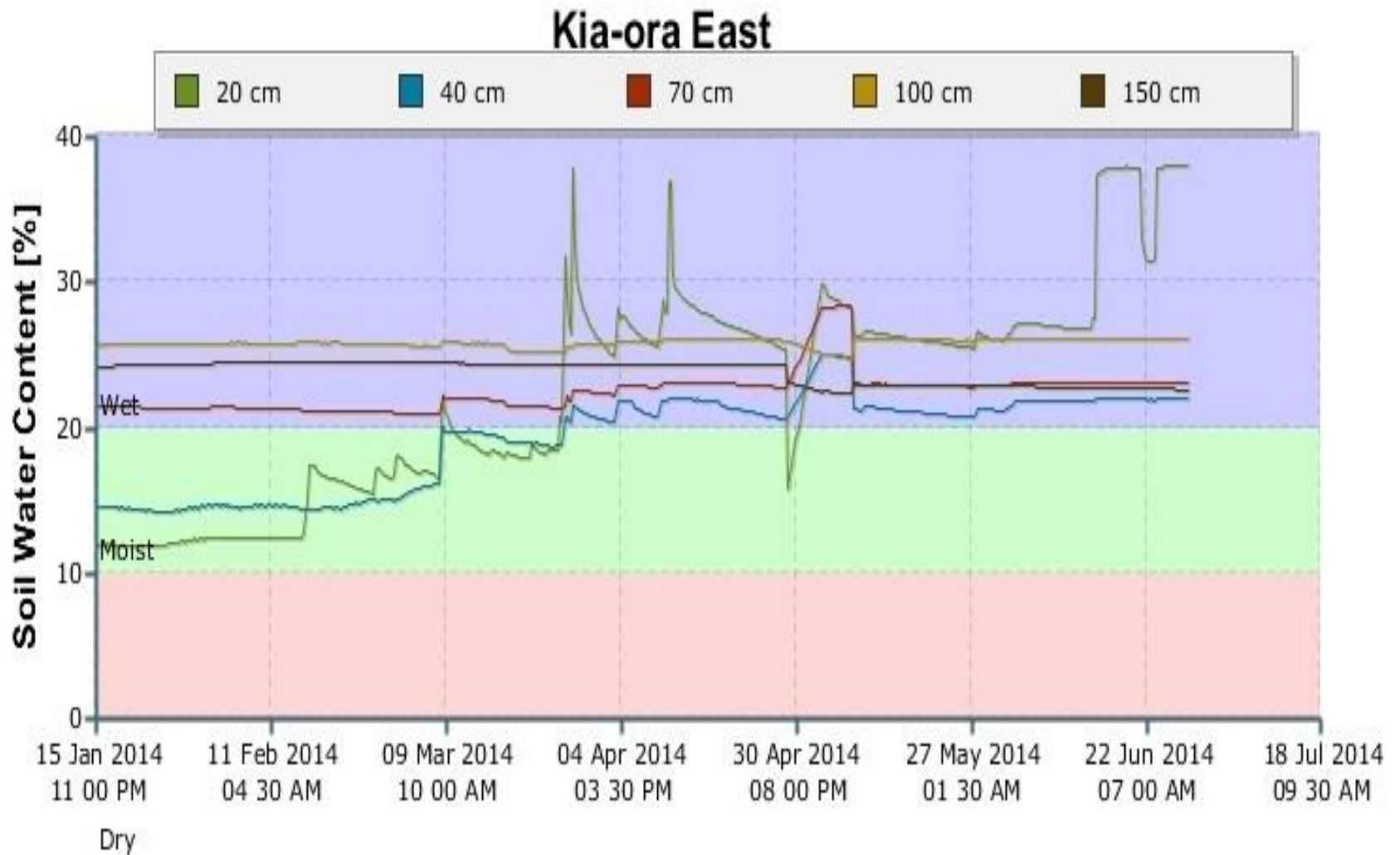
# How much “extra” feed have you on your property now?

- Answer from Yass producers – **500 to 1000 kgDM/ha** . The figures vary due to the amount of trading stock producers bought on in autumn/early winter.
- **What is your answer to this question?**

# How much soil moisture do you have in the ground?

- Yass – **full profile**. It is **hard to judge** if the profile is not full.
- **What is your estimate?**
- **Is this an area where we should be improving our available data? A question for the group.**

# Example of info that can be available daily from the web



# Monaro relevant

- You would need to cover the range of soil types because there is a big difference the soil's capacity to store water and difference in the soil's wilting points.
- **Who much spring pasture growth do you get from a full soil profile?**
- **A question for Doug with the next analysis??**
- **Yass soil's – 5 to 6 weeks**

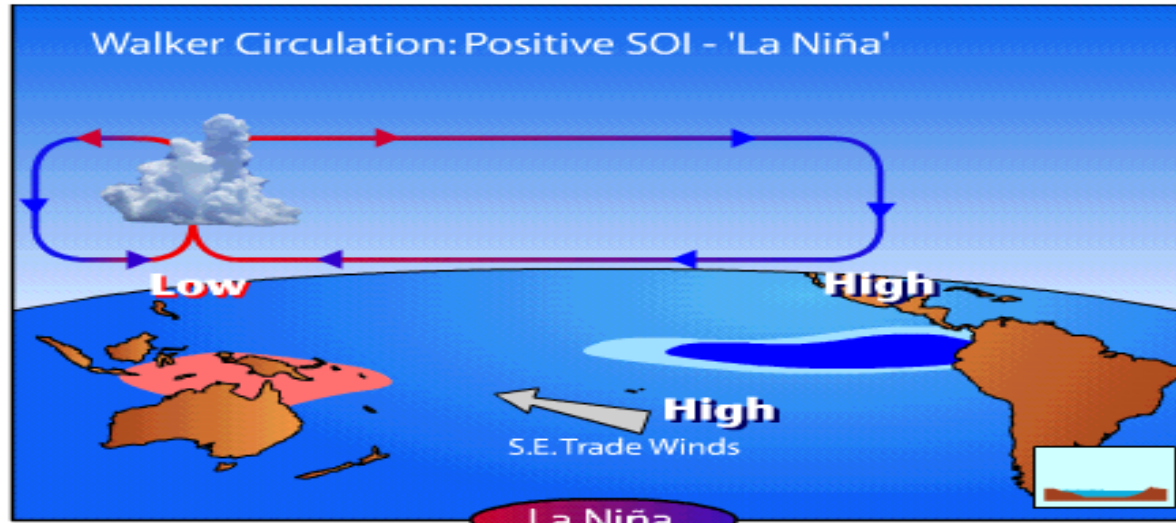
# Forecasts for Spring

- What climate factors are important in the Monaro?
- What does an El Niño alert really mean?
- What else should we read on the BOM?
- What changes are just about to occur with seasonal forecasts?

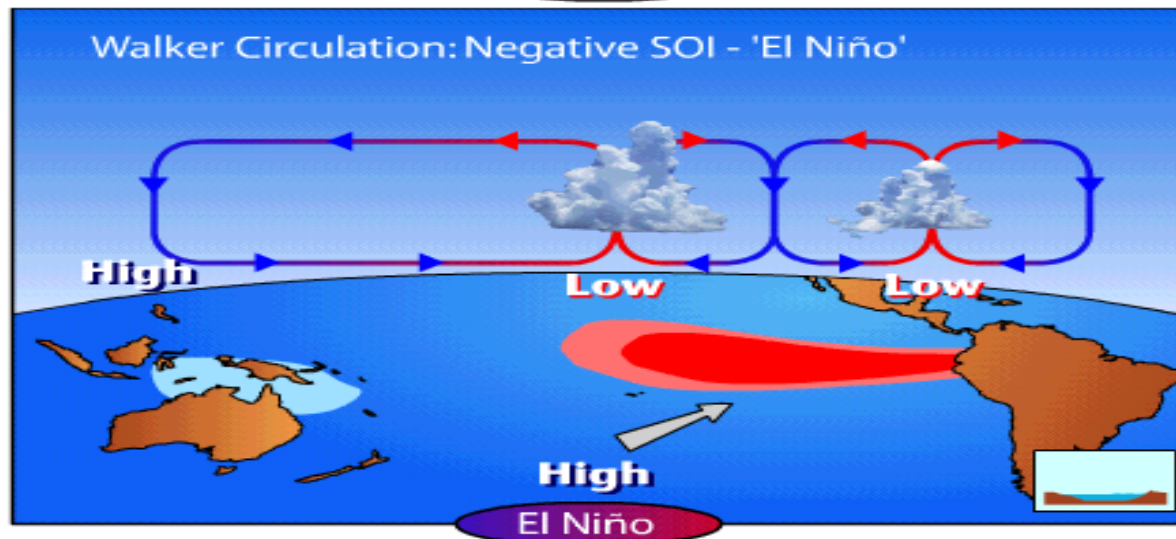


# El Nino Southern Oscillation

[Animation Link](#)

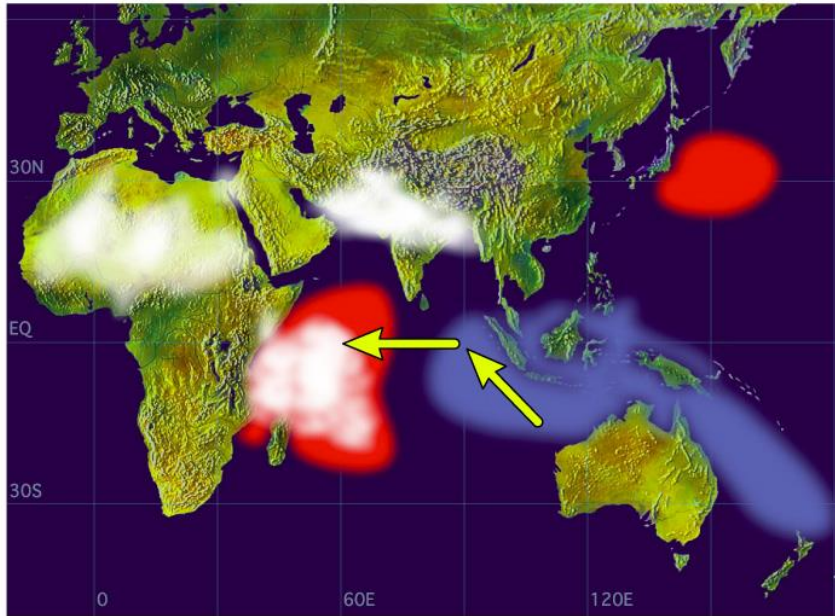


+ Neutral

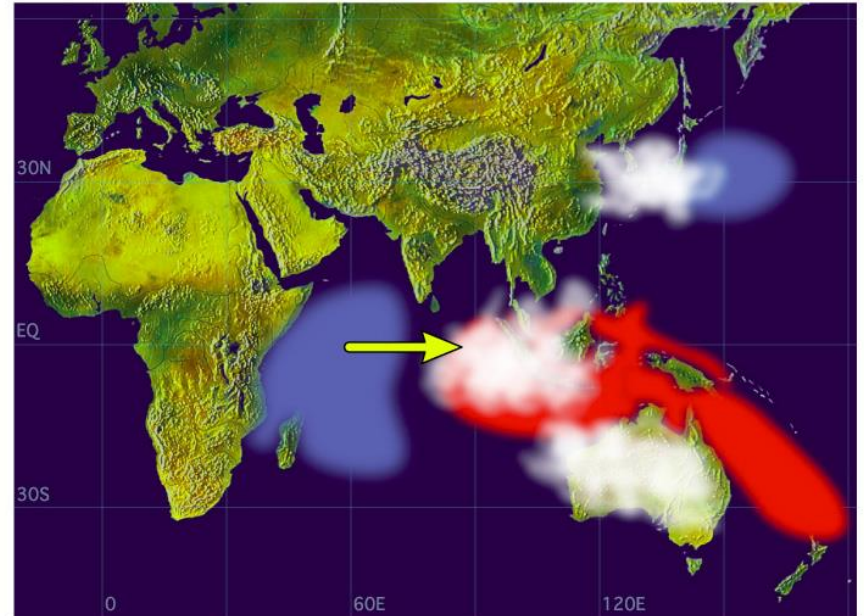


# Indian Ocean Dipole

Positive Dipole Mode



Negative Dipole Mode



**Source: A.Suryachandra Rao of the Institute for Global Change Research, Yokohama City, Japan**

# Bombala – yrs 1877 to 2006 rainfall for June to Nov in mm

	Minimum	25%	Median	75%	Maximum
All years	<b>130</b>	<b>218</b>	<b>298</b>	<b>380</b>	<b>752</b>
EI + IOD N 14 yrs	179	218	232	282	320
EL + IOD + 7 yrs	<b>168</b>	<b>254</b>	<b>348</b>	<b>376</b>	<b>491</b>
LA + IOD – 7 yrs	<b>238</b>	<b>269</b>	<b>340</b>	<b>377</b>	<b>408</b>

# Cooma – yrs 1877 to 2006 rainfall for June to Nov in mm

	Minimum	25%	Median	75%	Maximum
All years	<b>80</b>	<b>167</b>	<b>216</b>	<b>268</b>	<b>593</b>
EI + IOD N	80	135	164	208	263
EL + IOD +	<b>90</b>	<b>201</b>	<b>253</b>	<b>257</b>	<b>398</b>
LA + IOD -	<b>164</b>	<b>221</b>	<b>254</b>	<b>264</b>	<b>324</b>

Decisions.