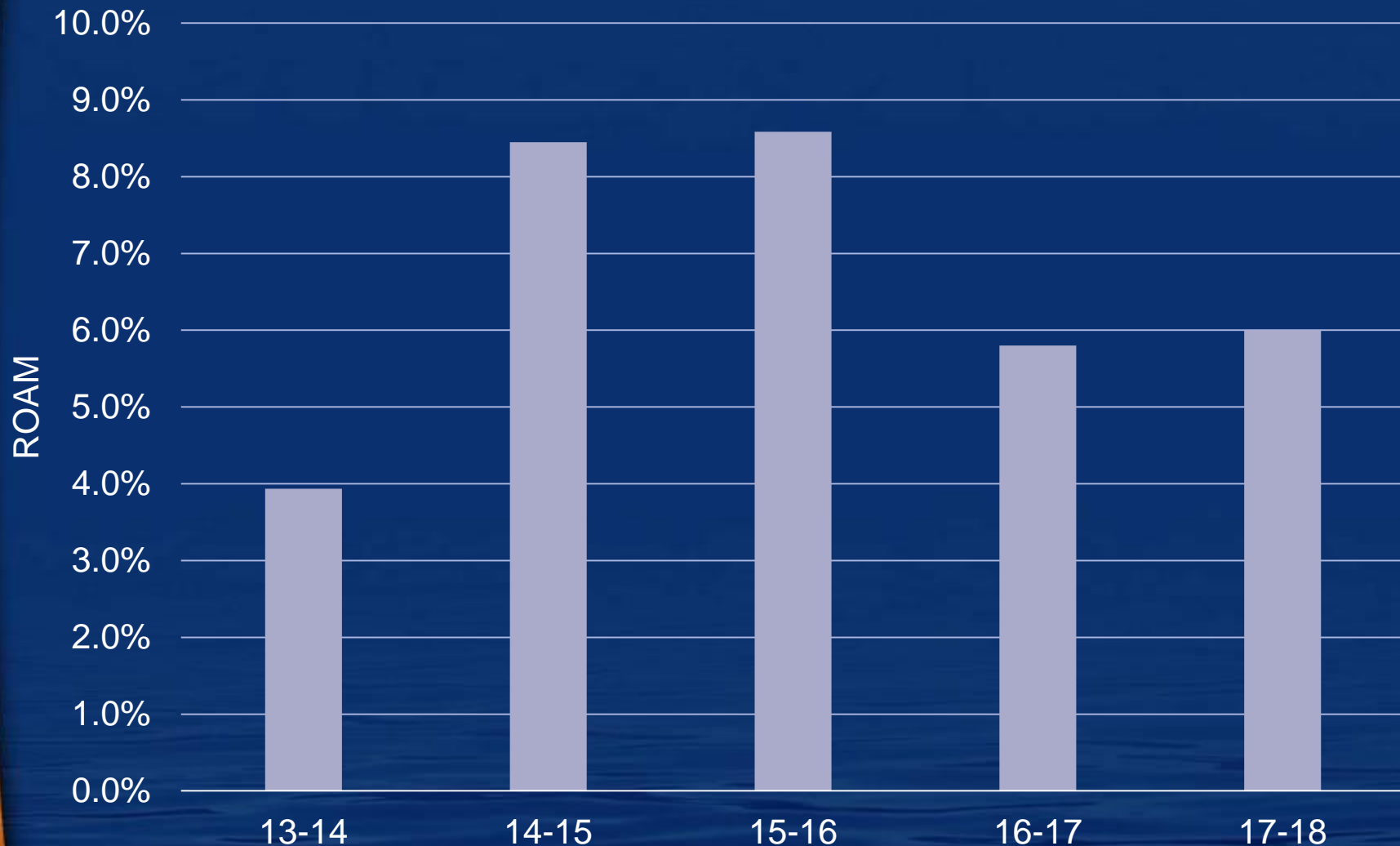


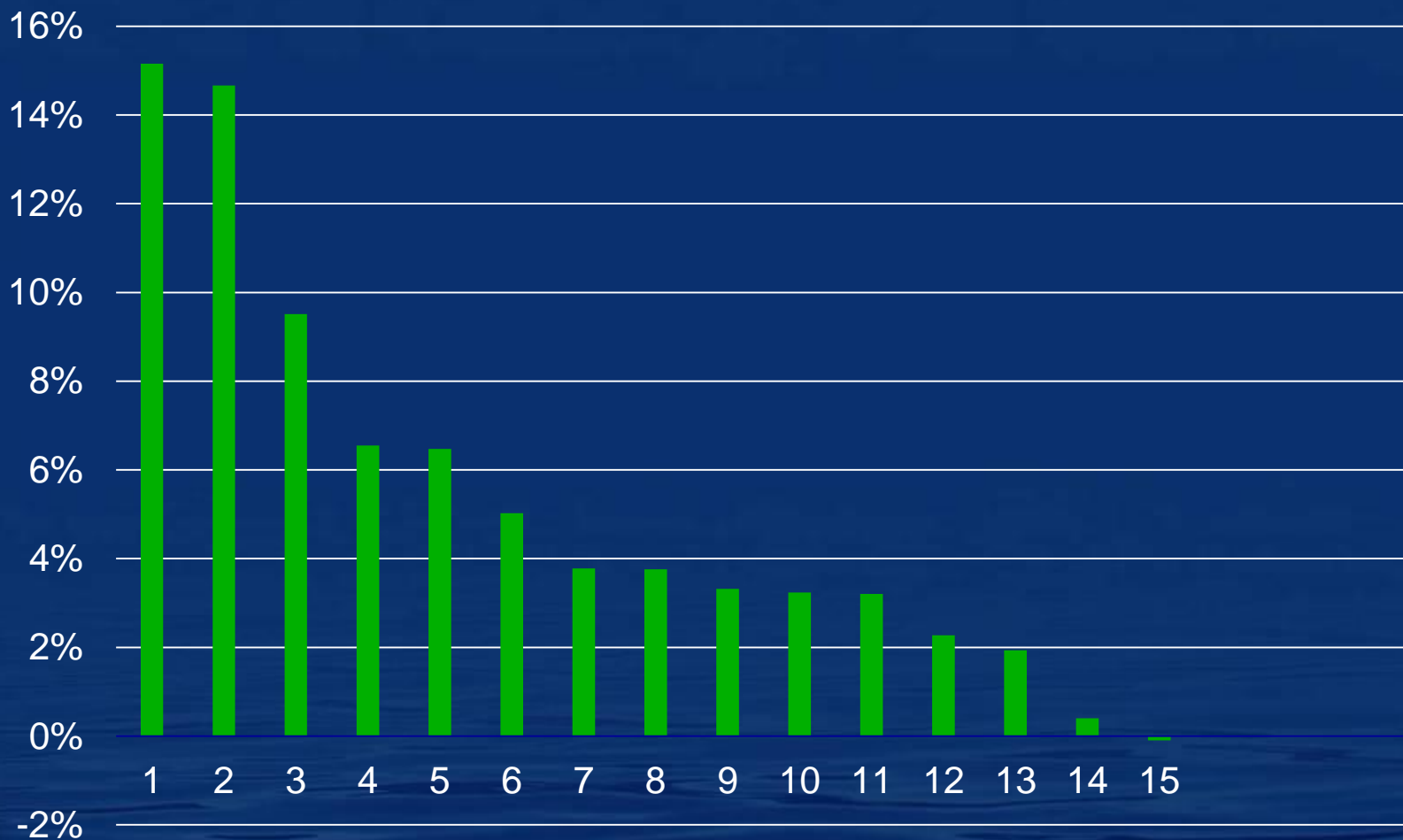
MFS Benchmarking 2017-18

Another better than average year – but maybe not for the Monaro

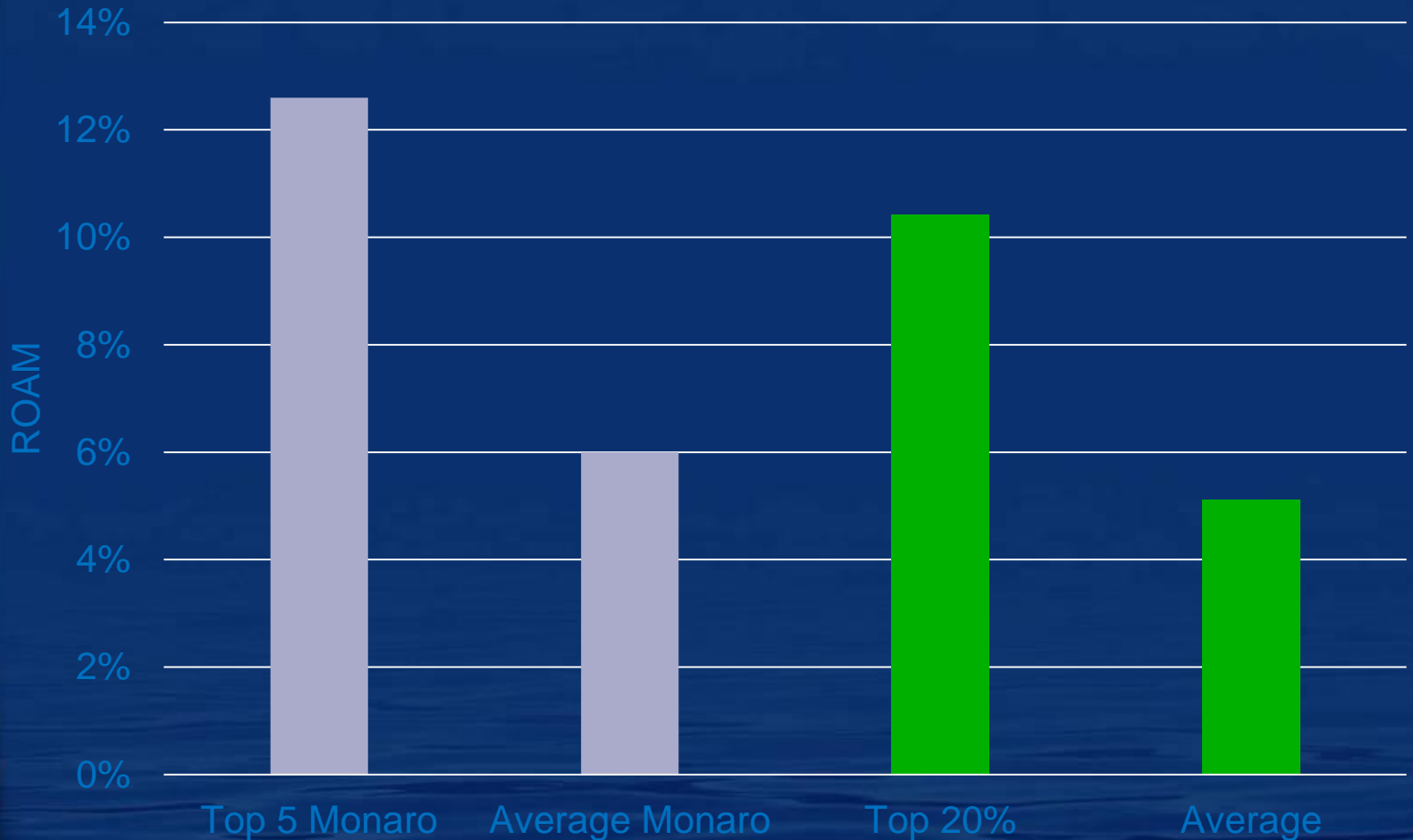


Variation within the group is normal

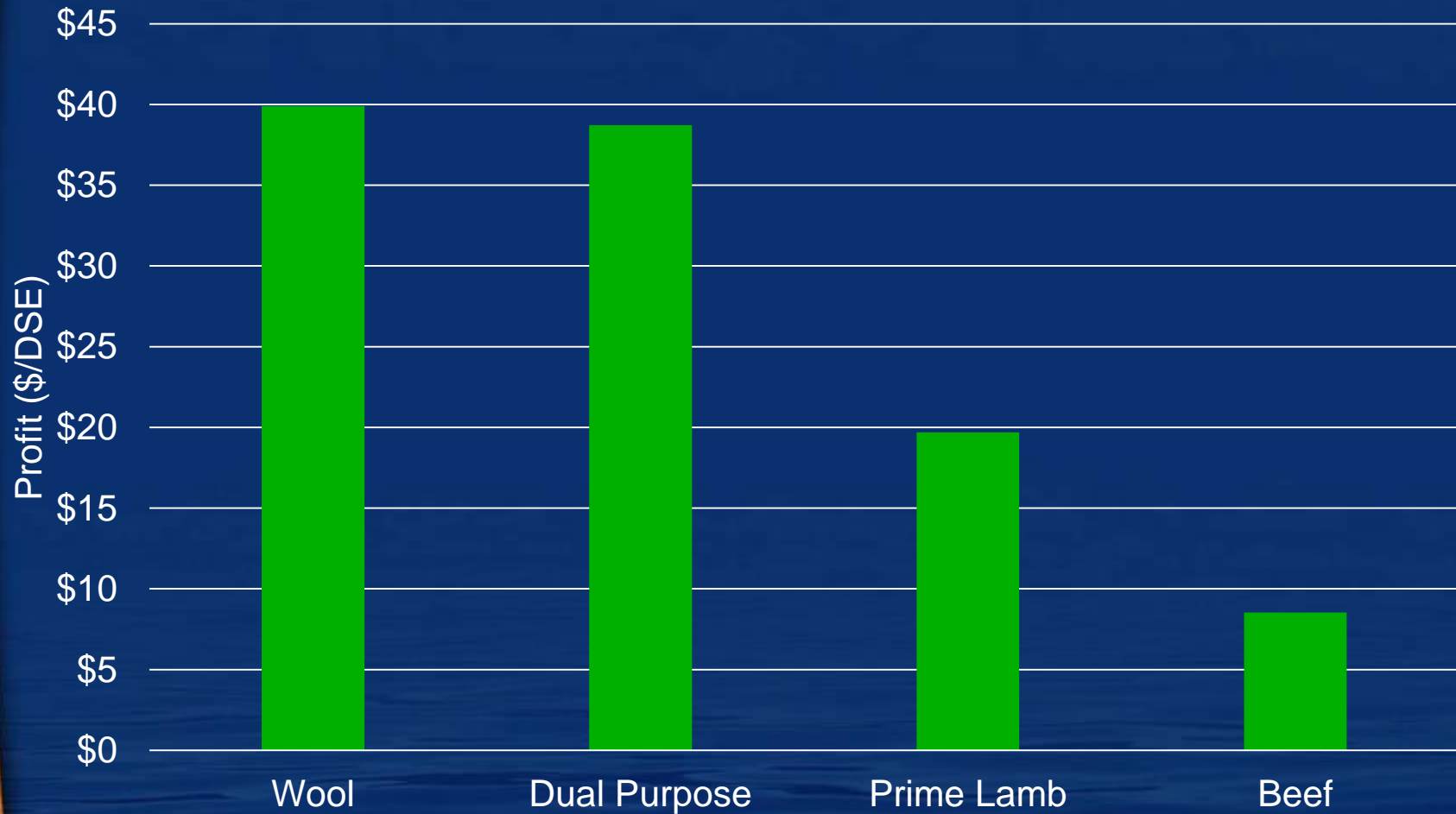
■ 17-18 ROAM



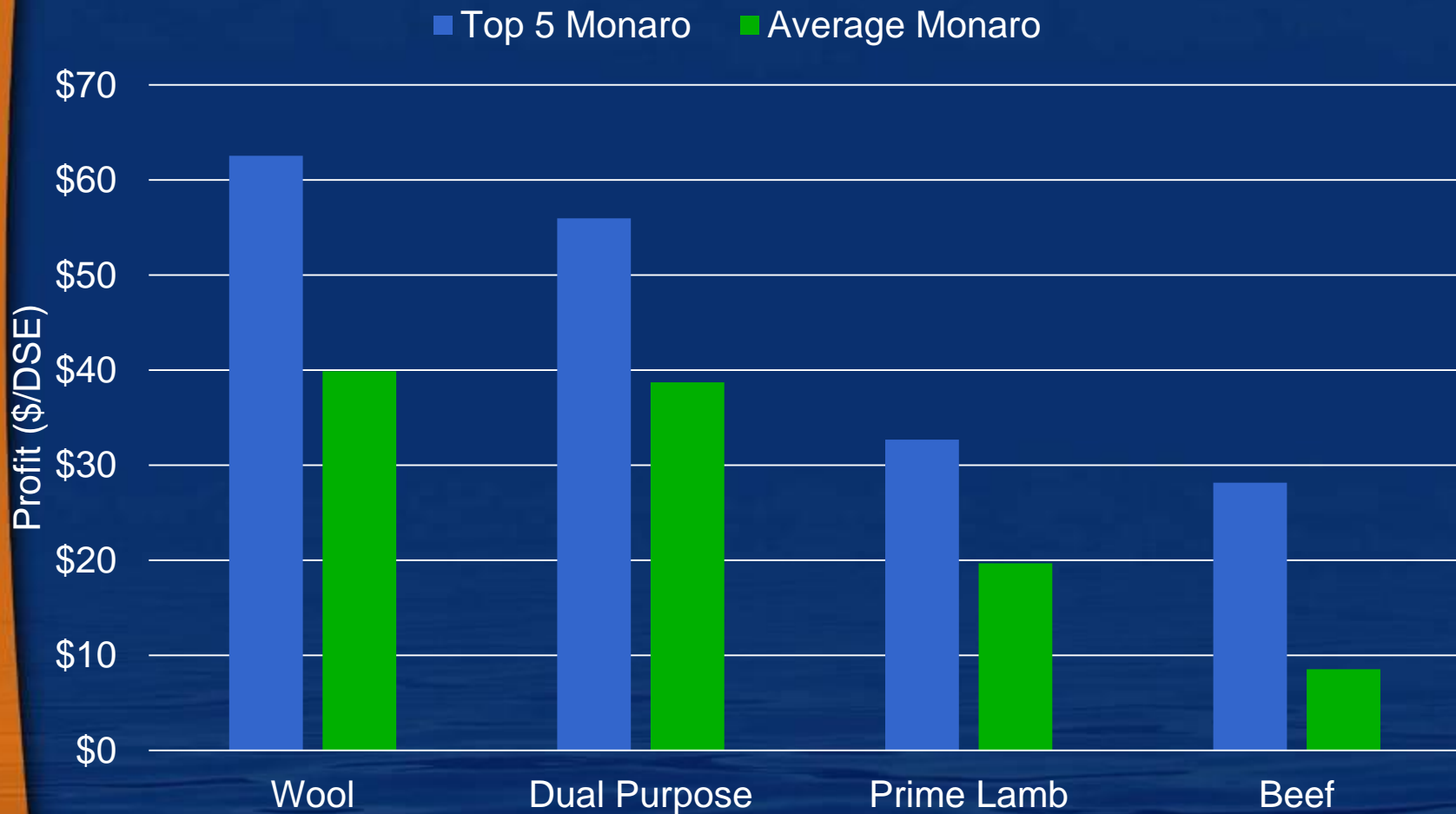
Comparable profitability to the remainder of the benchmarking database



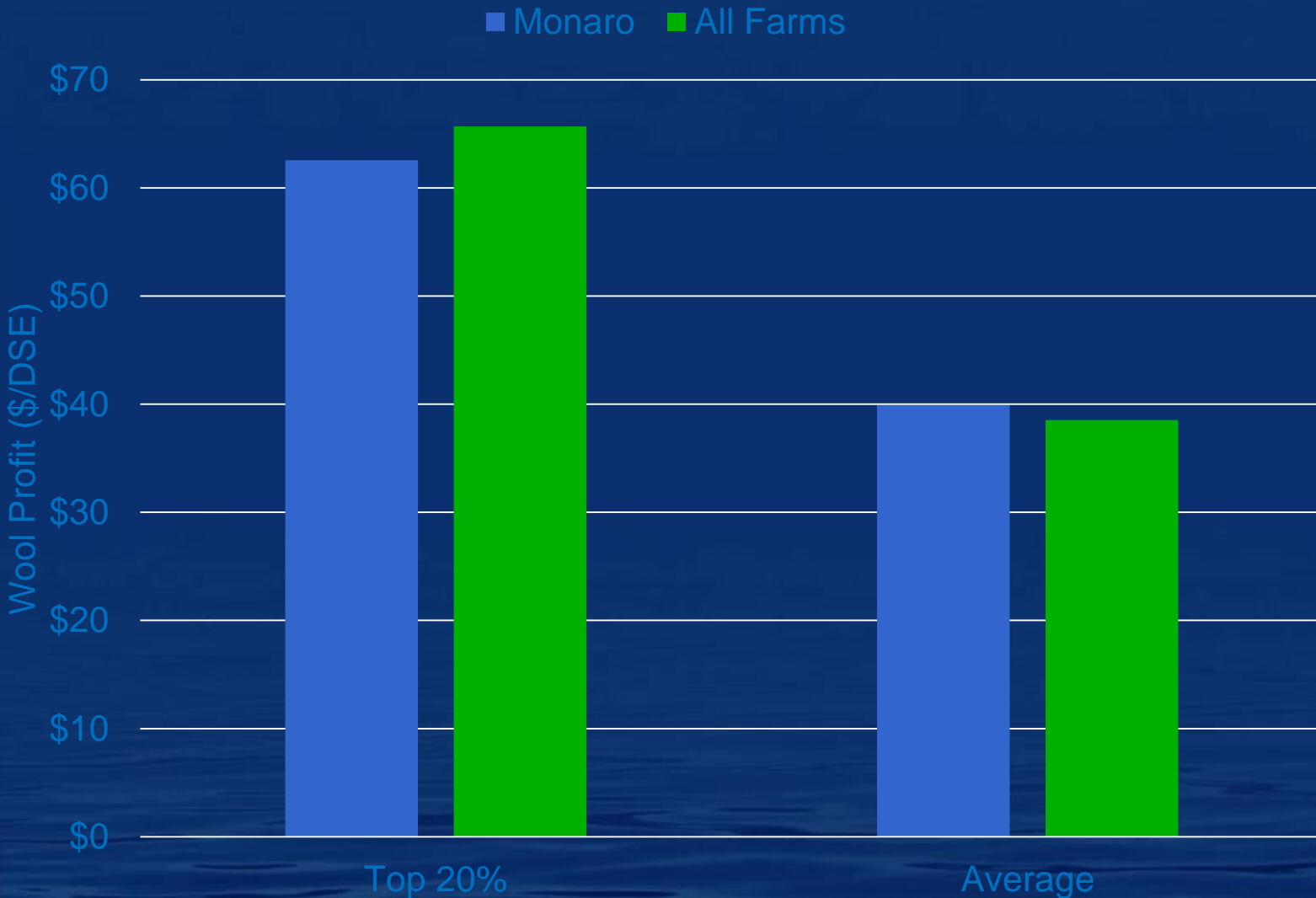
Beef was the 'least' profitable enterprise in 17-18



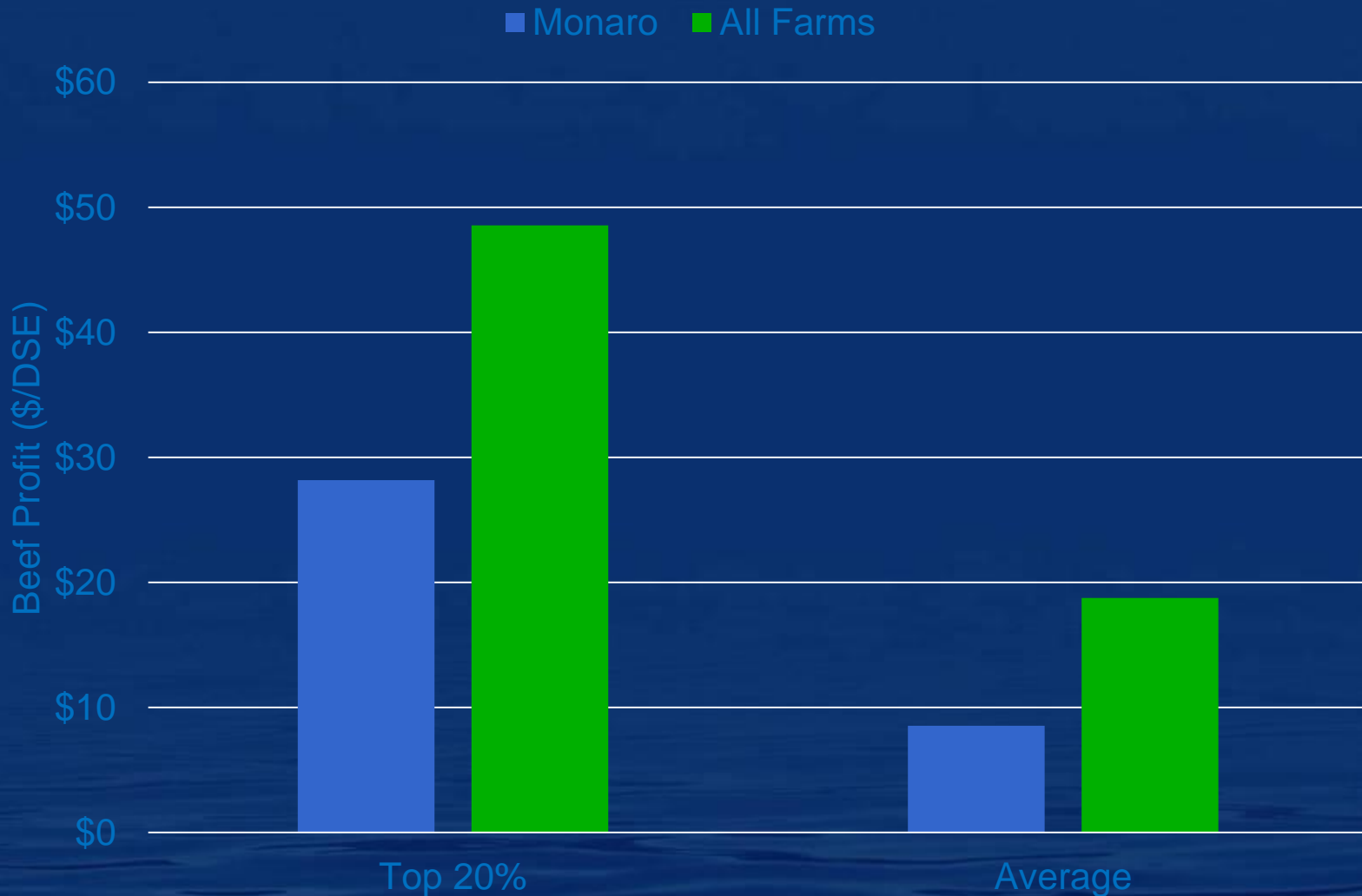
You know a commodity is going well when there is not more variation within than between enterprises



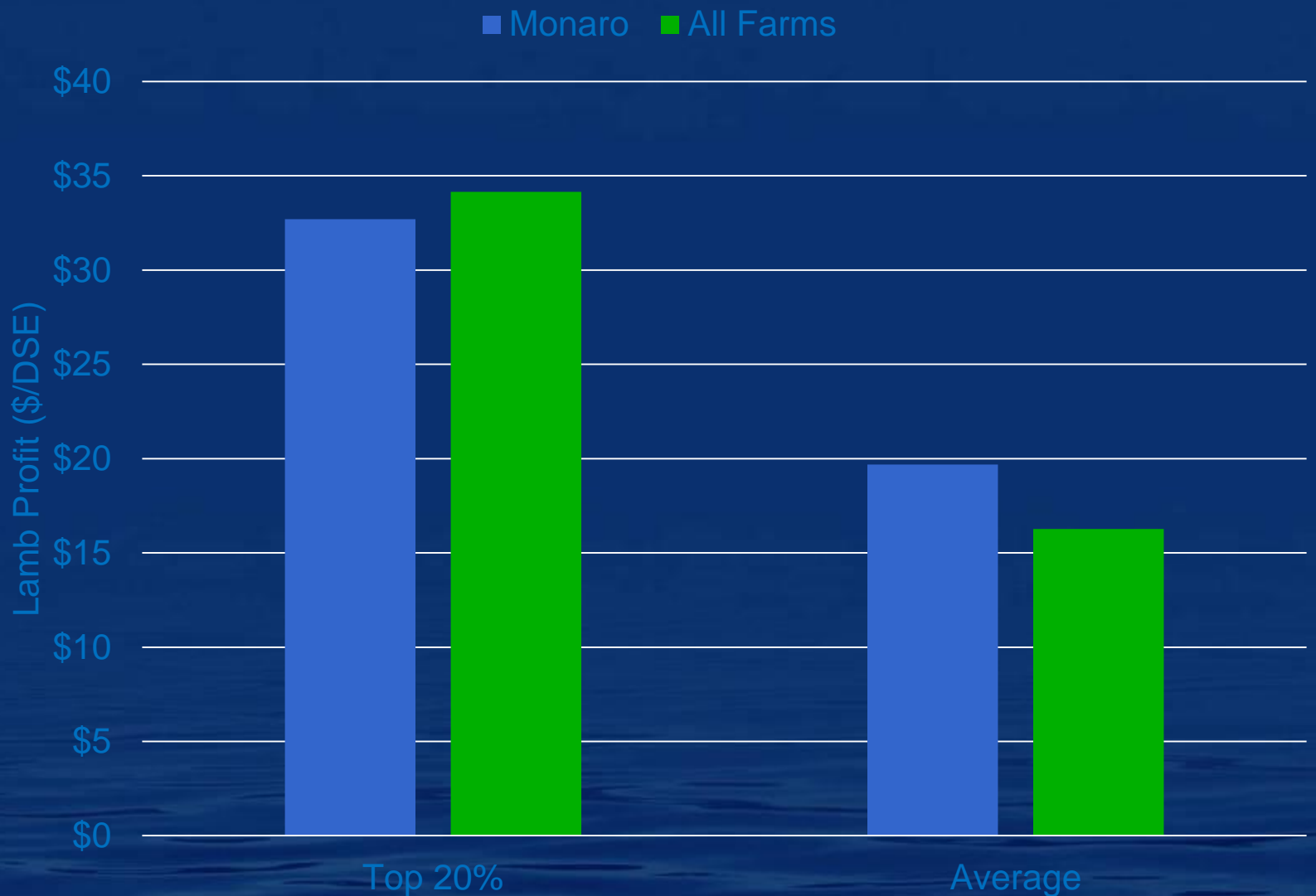
Comparable wool profits per DSE to all farms



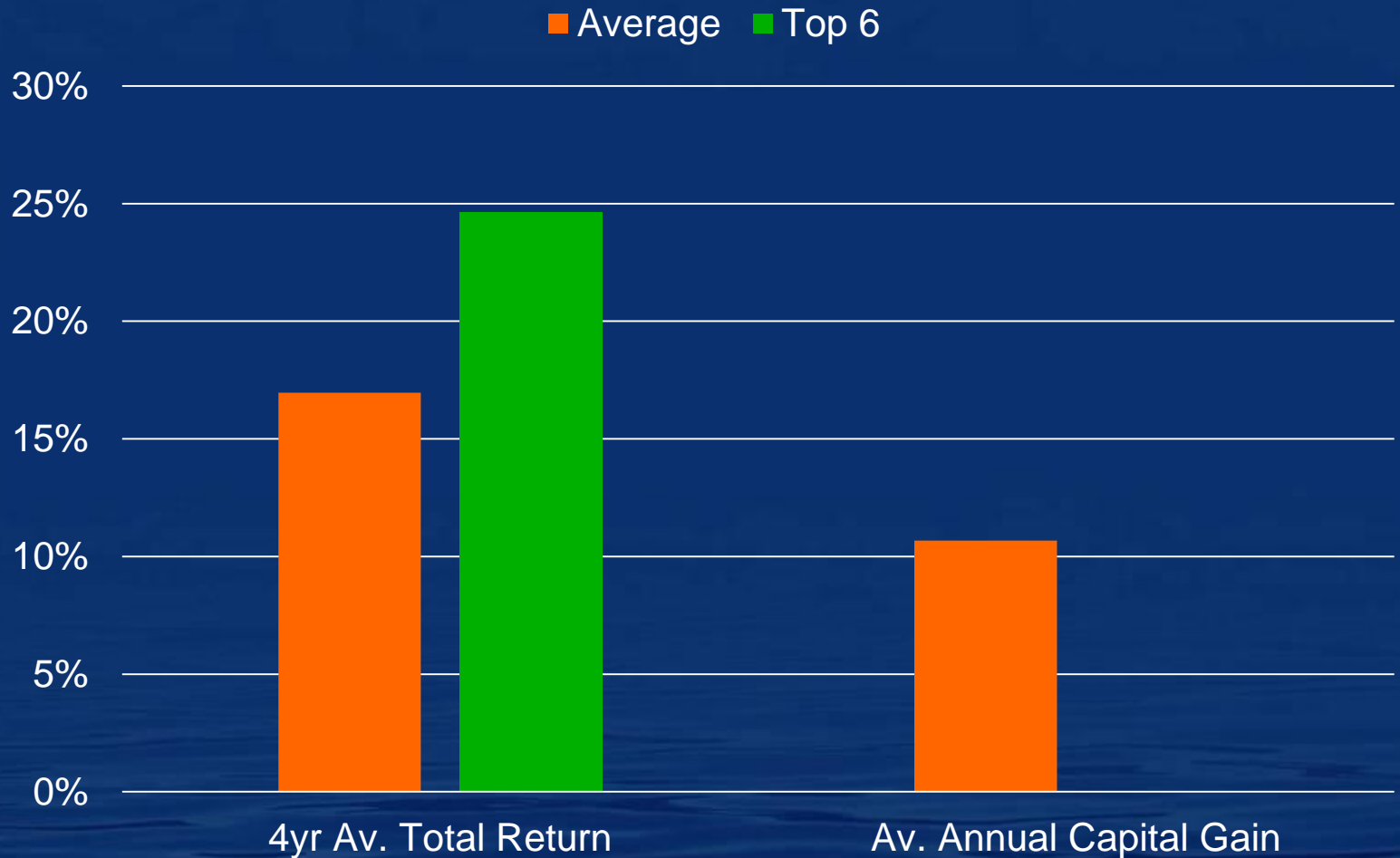
Comparable beef profits per DSE to all farms



Comparable prime lamb profits per DSE to all farms.



Monaro farming is great business



What changes are being instigated from within the group

- Enterprise rationalization
- Genetics
- Systems changes
- Investments in productivity