

# Seasonal Outlook Apr - June 19



Doug Alcock

0411 139594

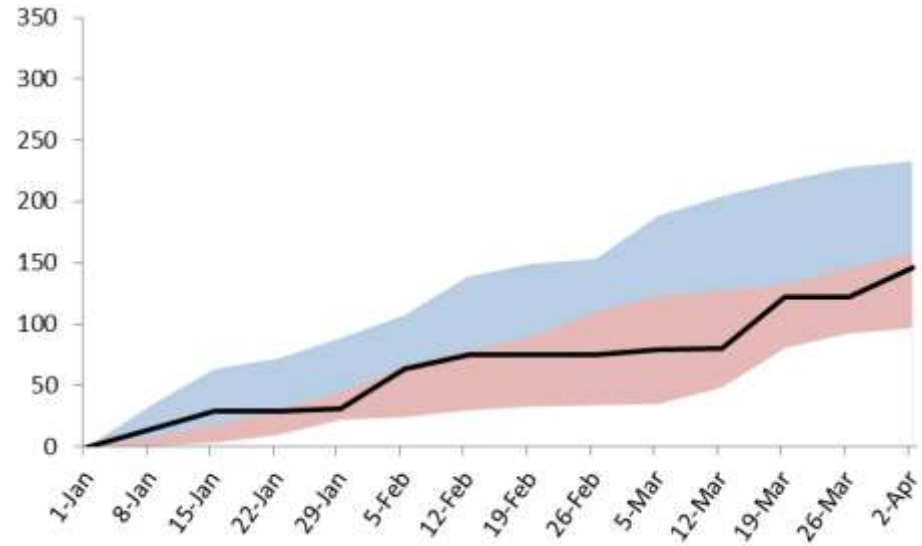
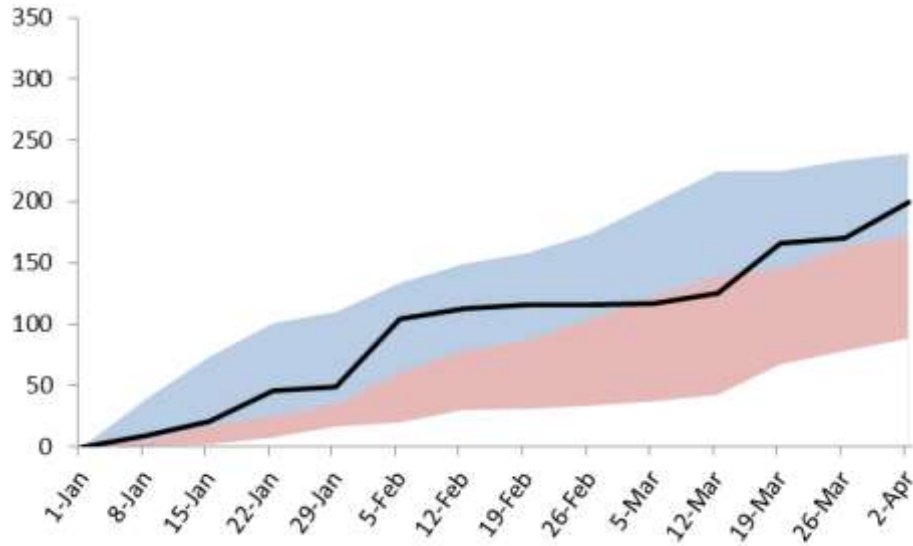
# Seasonal conditions for the “spin-up” to the 31<sup>st</sup> of Mar



# Cumulative Rainfall since 1<sup>st</sup> Jan 2019

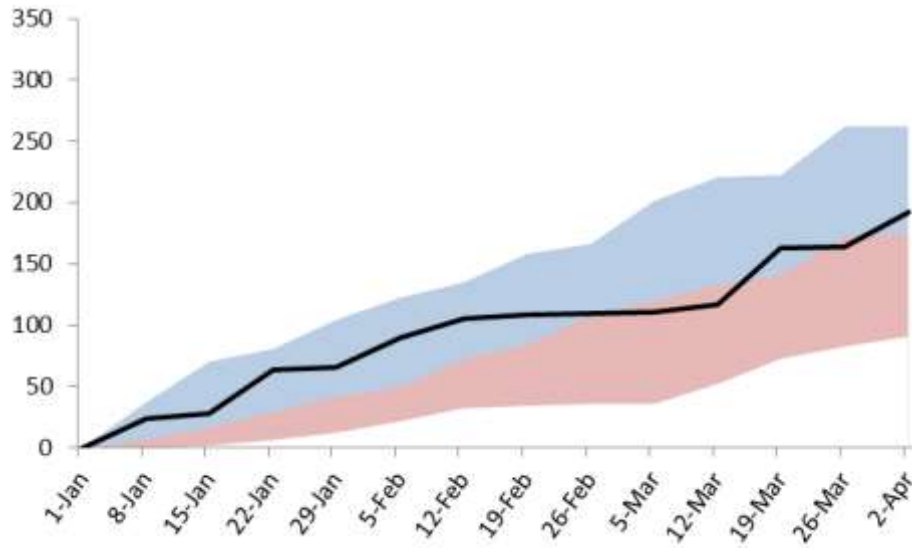
Bungarby

Delegate

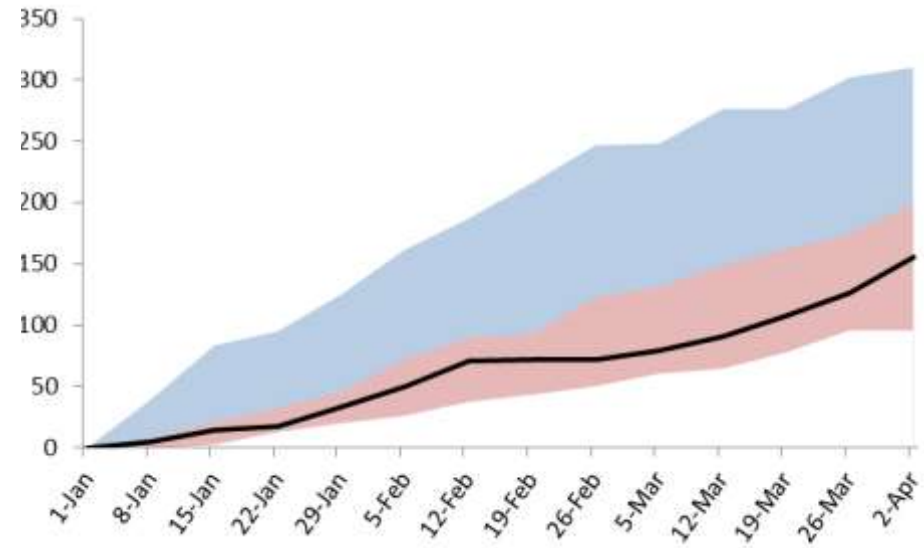


# Cumulative Rainfall since 1<sup>st</sup> Jan 2019

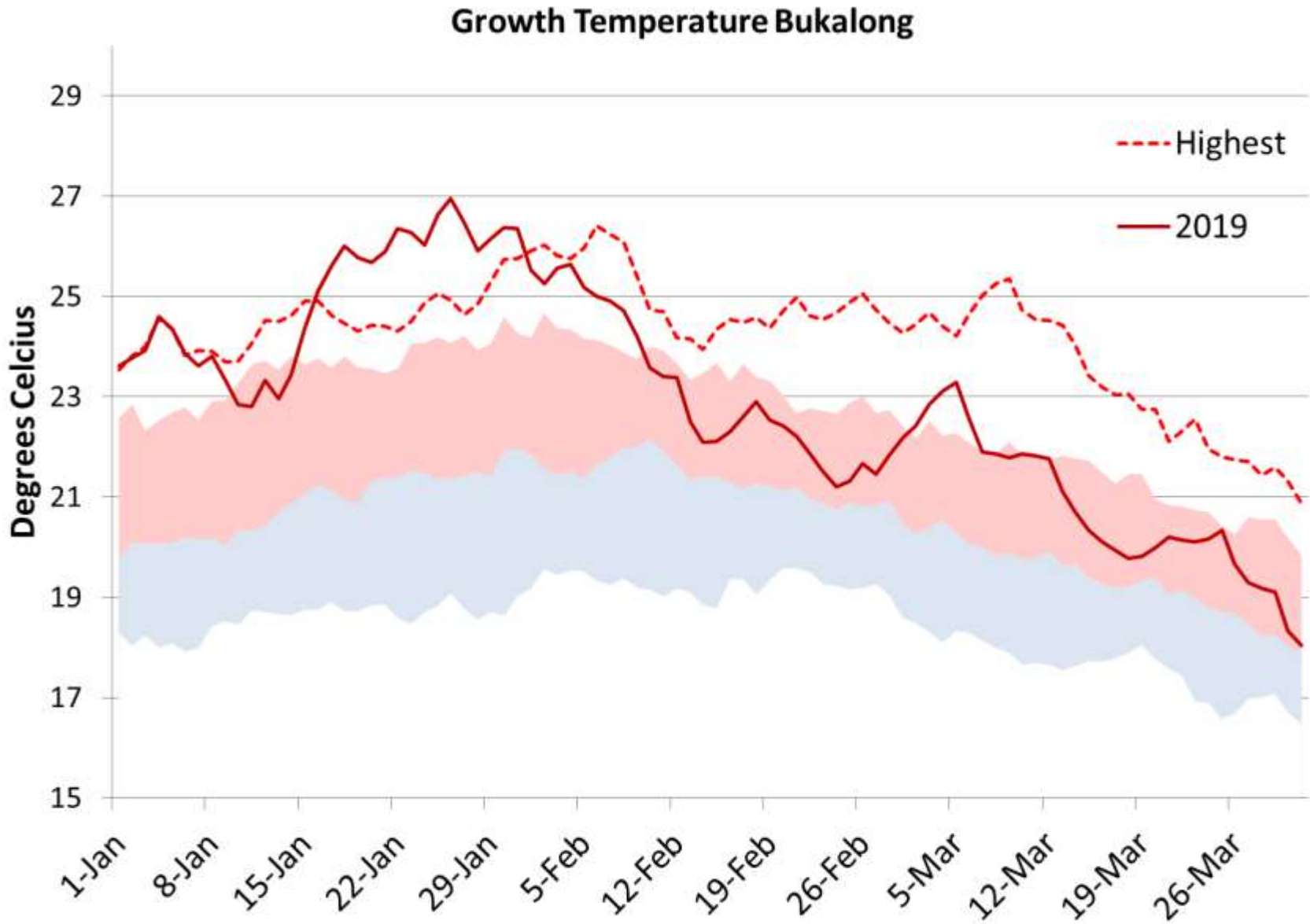
## Bukalong



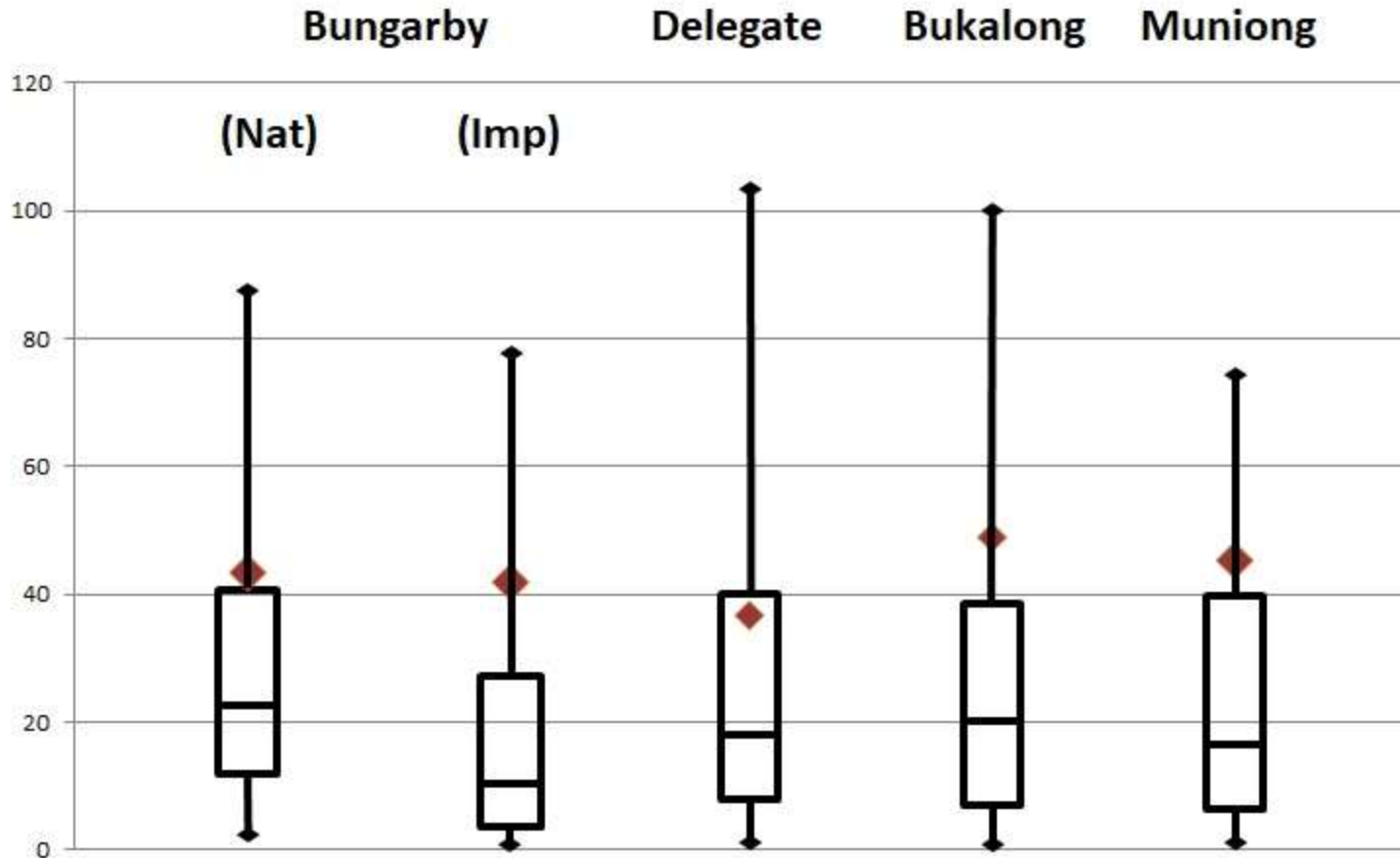
## Muniong



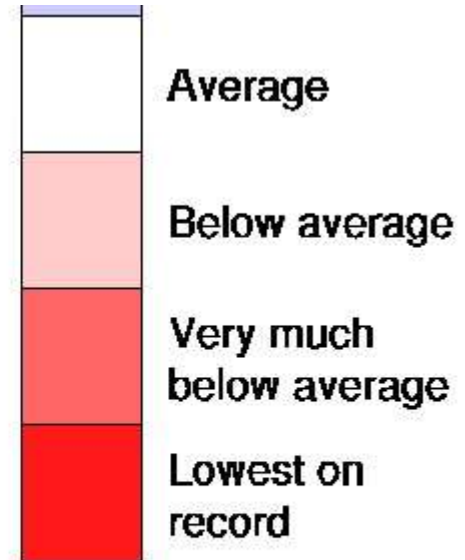
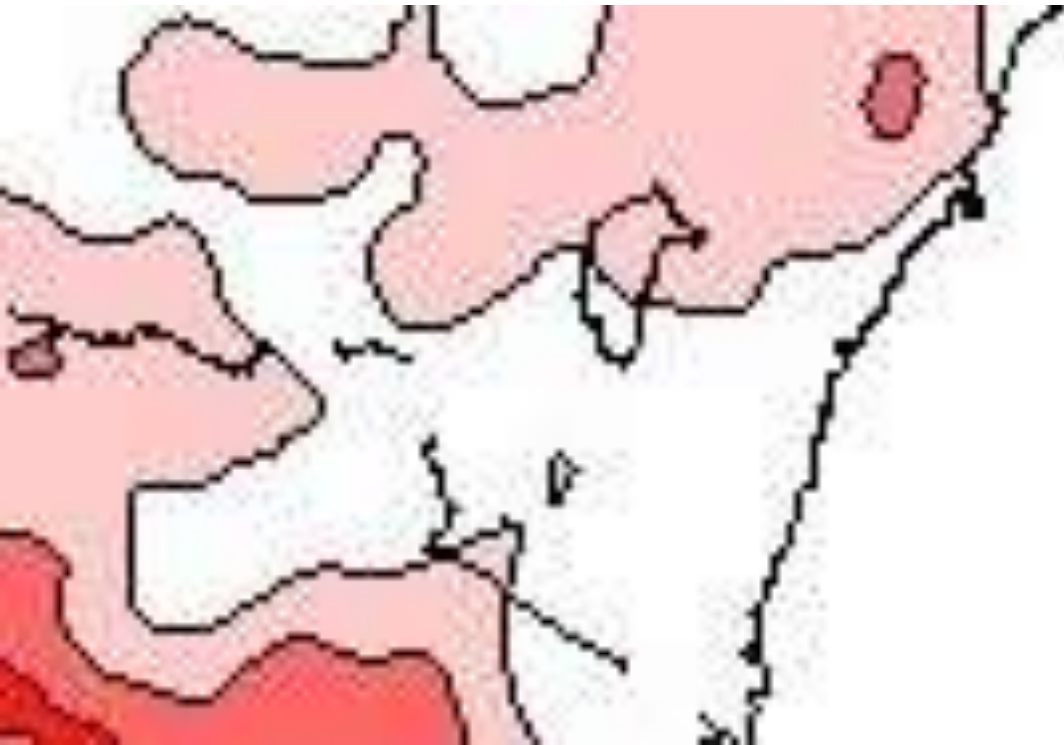
# High summer temperatures



# PAW on 31 March 19

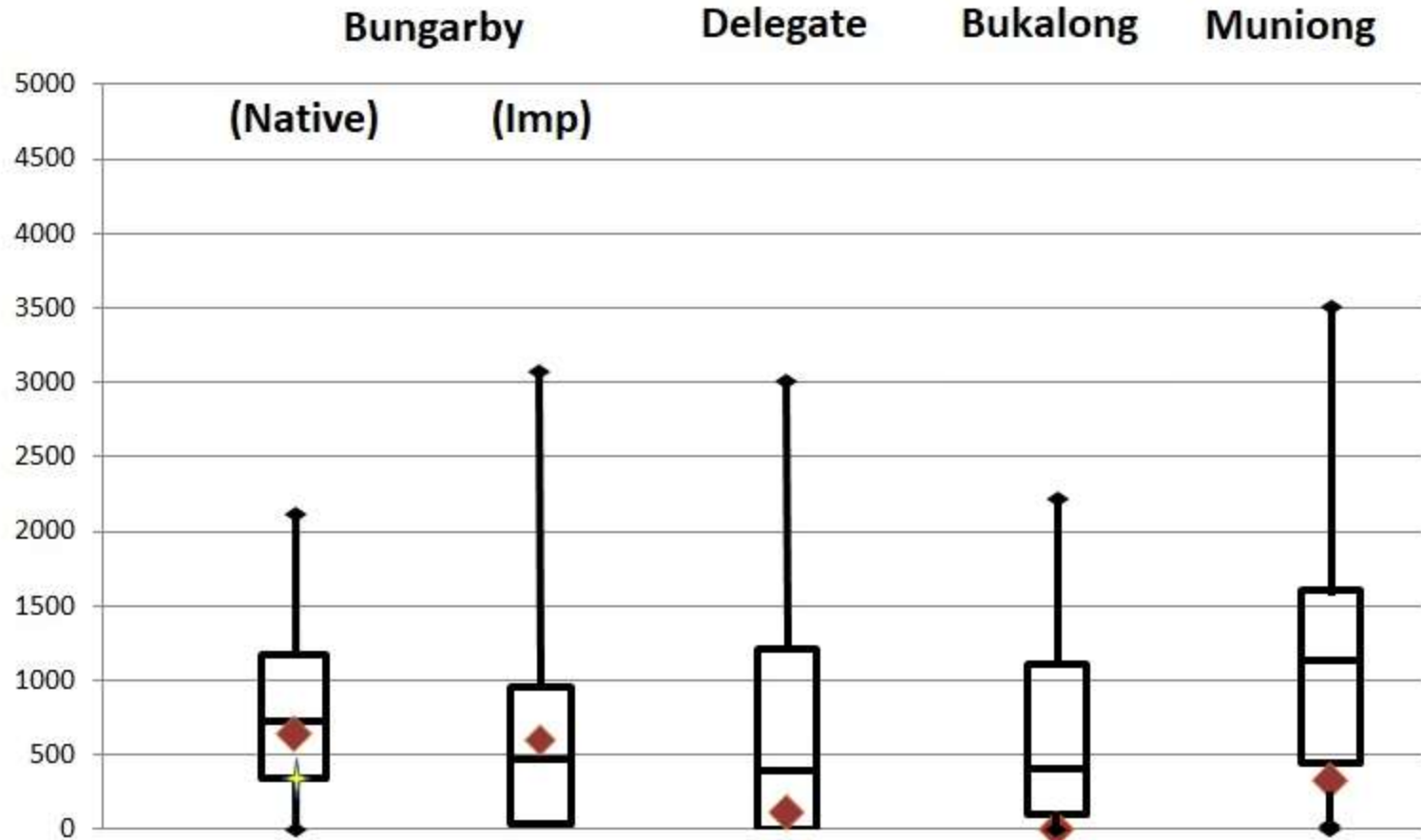


# BOM Lower Layer Soil Moisture



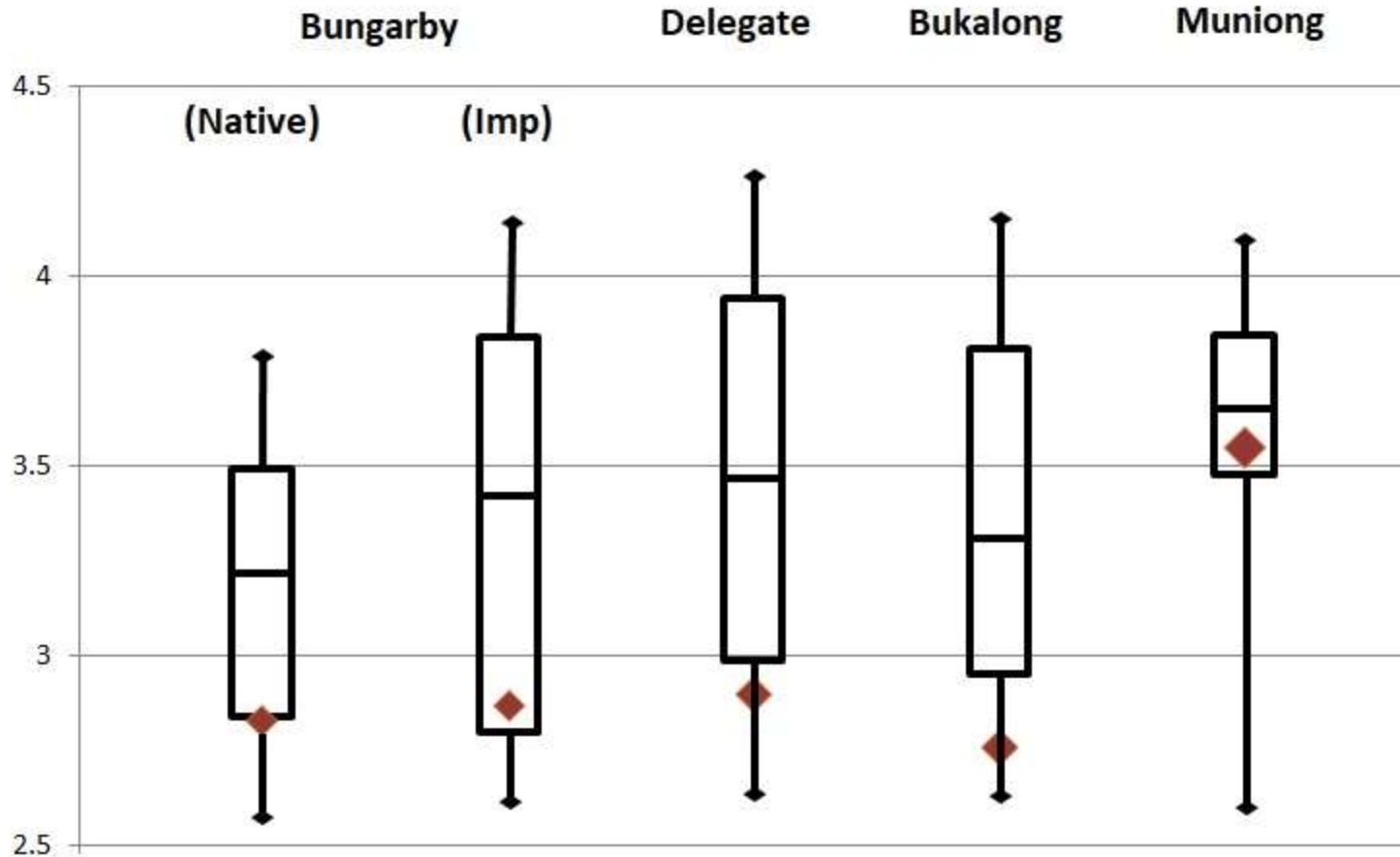


# Green Herbage 31<sup>st</sup> March 19

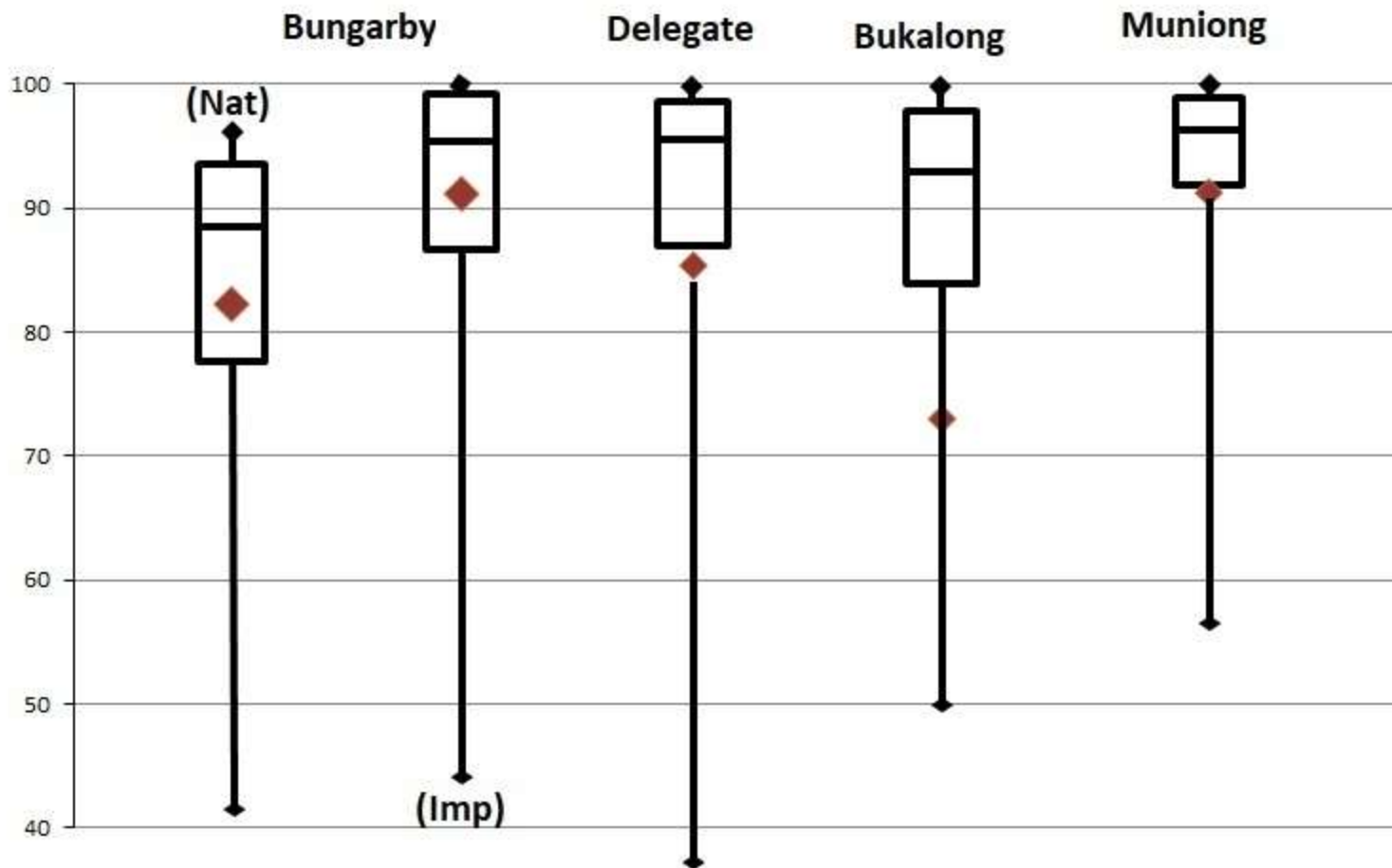




# Ewes CS 31<sup>st</sup> March 19



# Ground Cover 31<sup>st</sup> of March 19



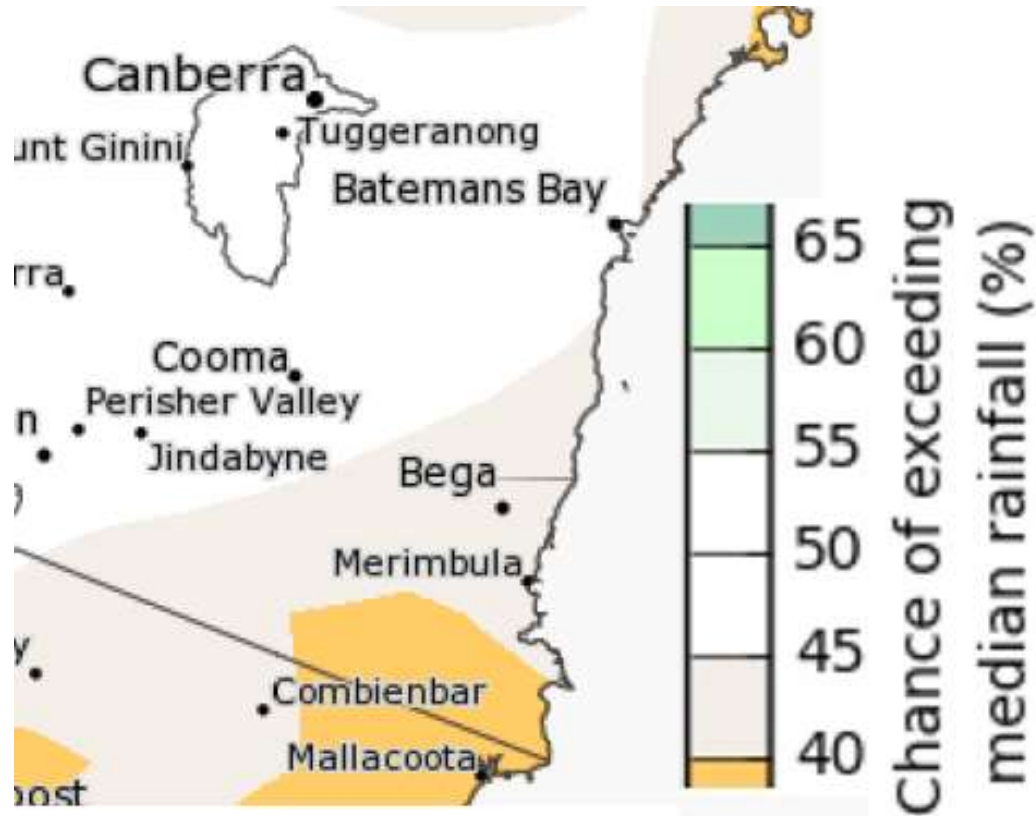
# Seasonal Projections

- Projecting from 1<sup>st</sup> March to 30<sup>th</sup> June
- Applying seasonal rainfall patterns from each of the past 50 years
- GrassGro assumes no historical seasonal outcome is any more or less likely than another.
- What does the BOM outlook say?



# BOM

## Chance of exceeding median April – June 2019



***Low Accuracy***



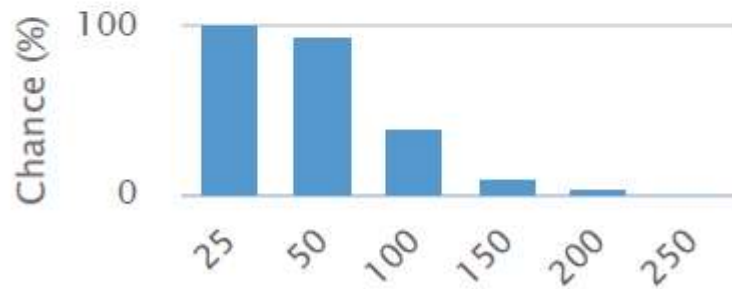
# What does this mean?

## Outlook for April to June at Bungarby

### Rainfall

Median	100 mm
Chance of above median	<u>Equal likelihood</u>

Rainfall total of at least (mm)



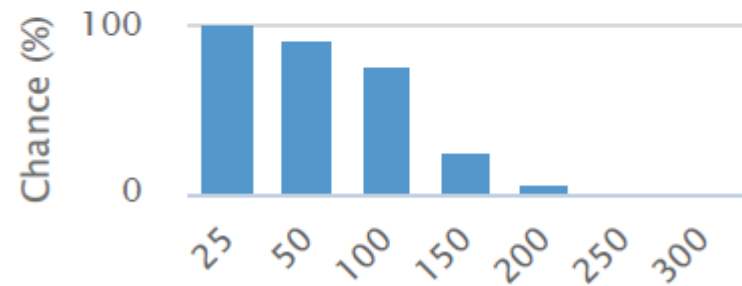
Past accuracy	<u>Low</u>
---------------	------------

## Outlook for April to June at Delegate

### Rainfall

Median	129 mm
Chance of above median	<u>Equal likelihood</u>

Rainfall total of at least (mm)



Past accuracy	<u>Low</u>
---------------	------------



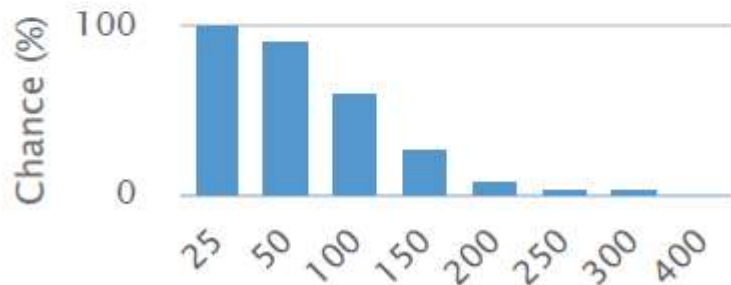
# What does this mean?

## Outlook for April to June at Bukalong

### Rainfall

Median	130 mm
Chance of above median	<u>Equal likelihood</u>

### Rainfall total of at least (mm)



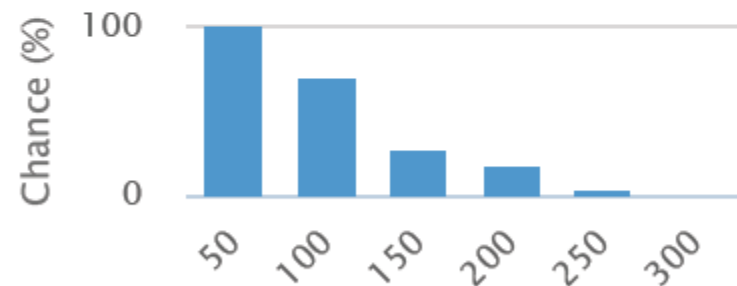
Past accuracy	<u>Very low</u>
---------------	-----------------

## Outlook for April to June at Dry Plain

### Rainfall

Median	121 mm
Chance of above median	<u>Equal likelihood</u>

### Rainfall total of at least (mm)



Past accuracy	<u>Low</u>
---------------	------------

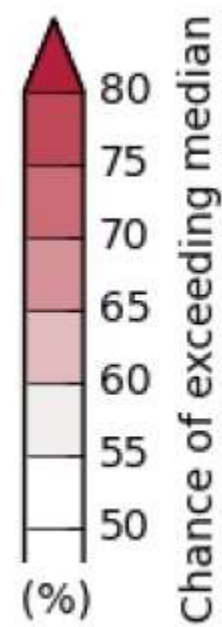




# Temperature Outlook

Max T

Min T



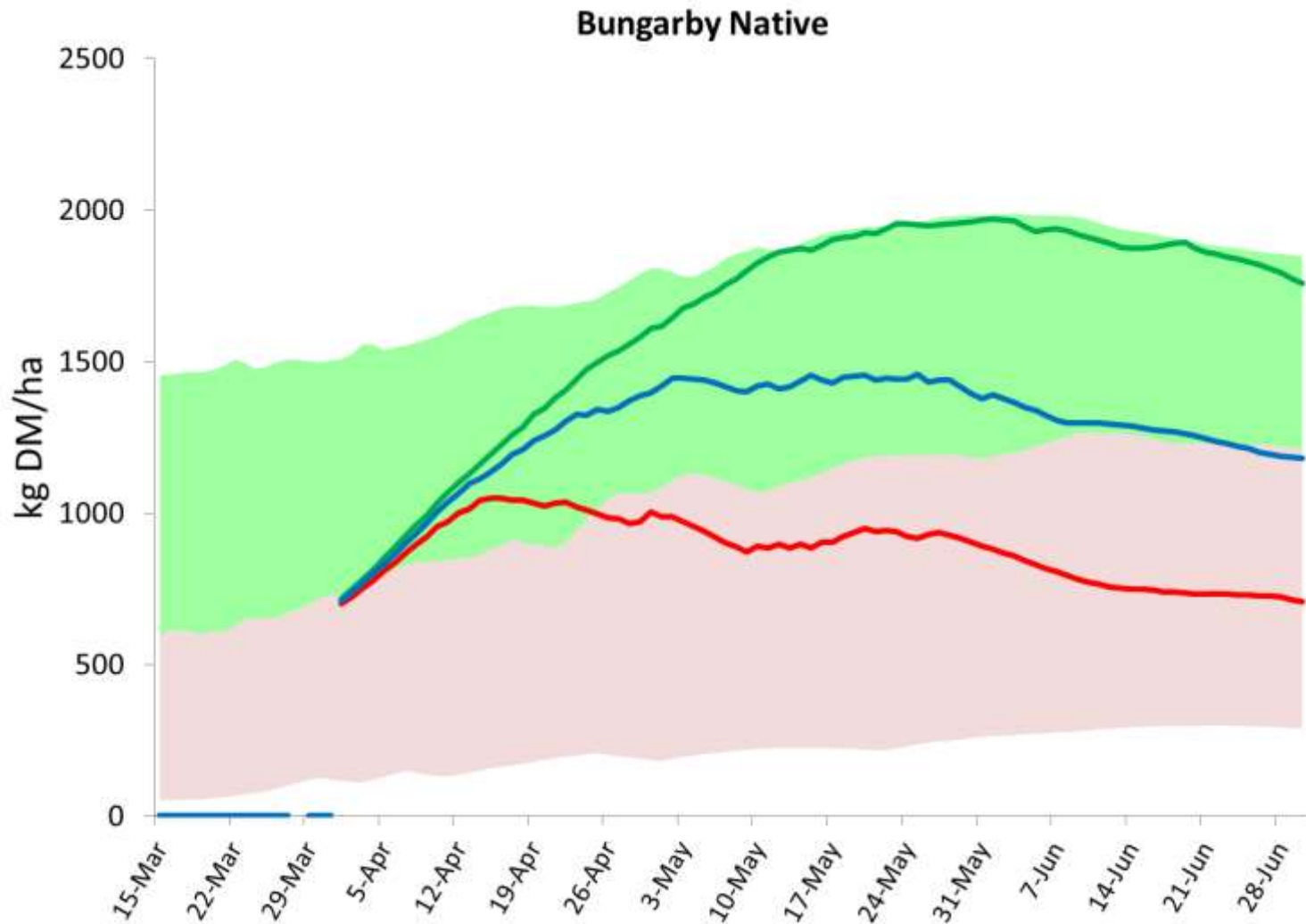


# Conclusion from BOM outlook

- Neutral signal on Rainfall
  - No reason to alter the simulation
- Warmer temperatures.
  - Low accuracy on Min Temp

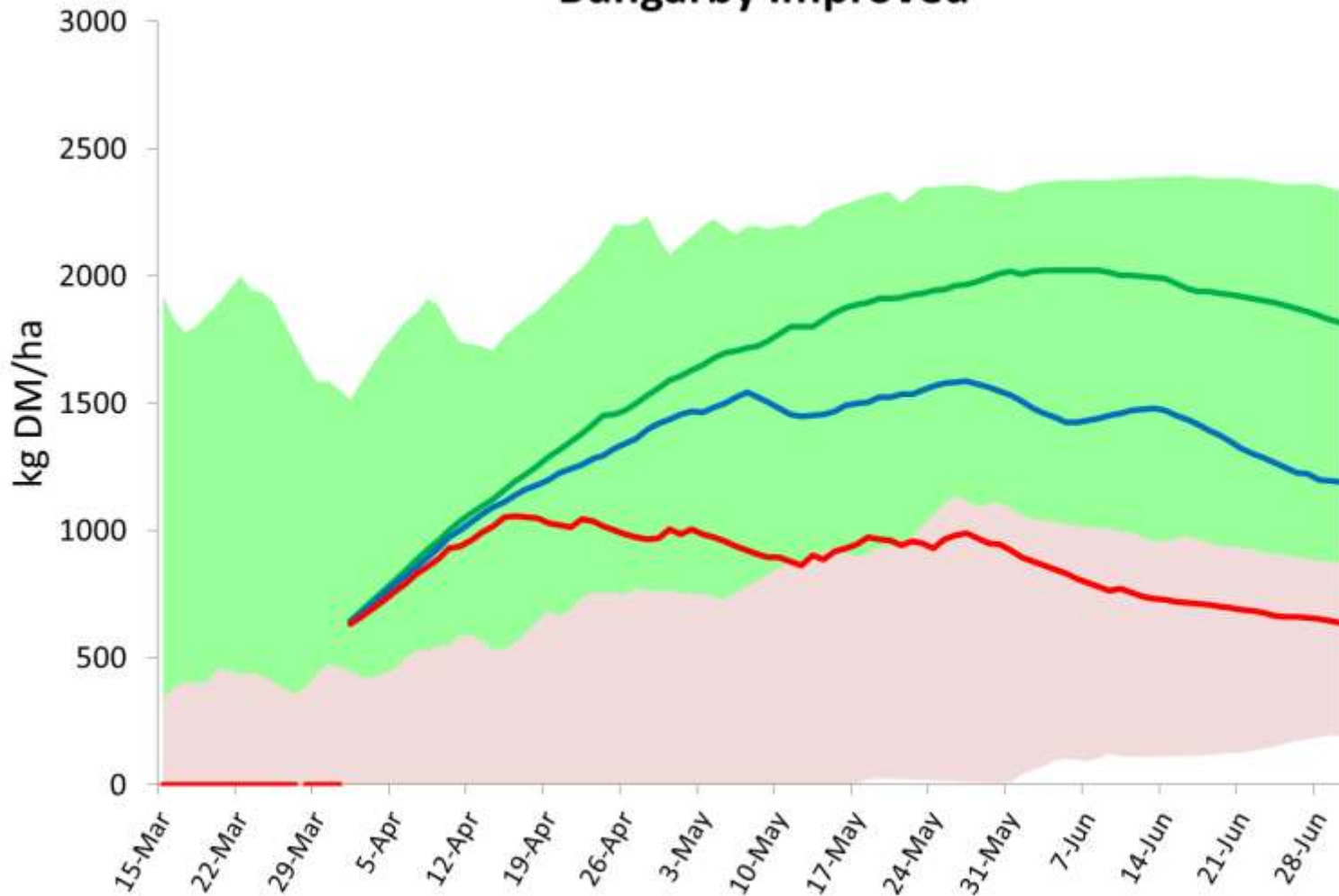


# Projections, *Green Herbage*



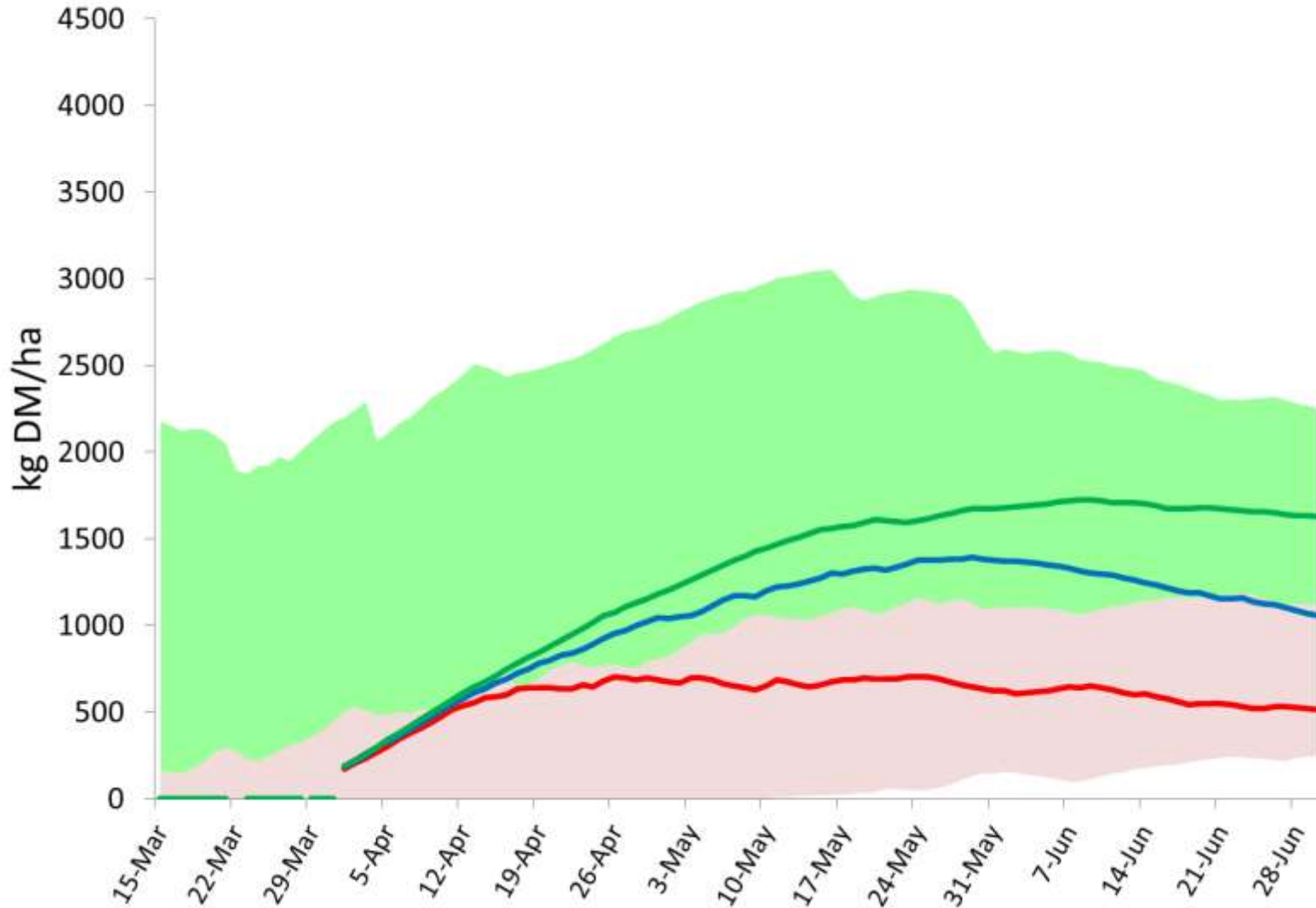
# Projections, *Green Herbage*

## Bungarby Improved



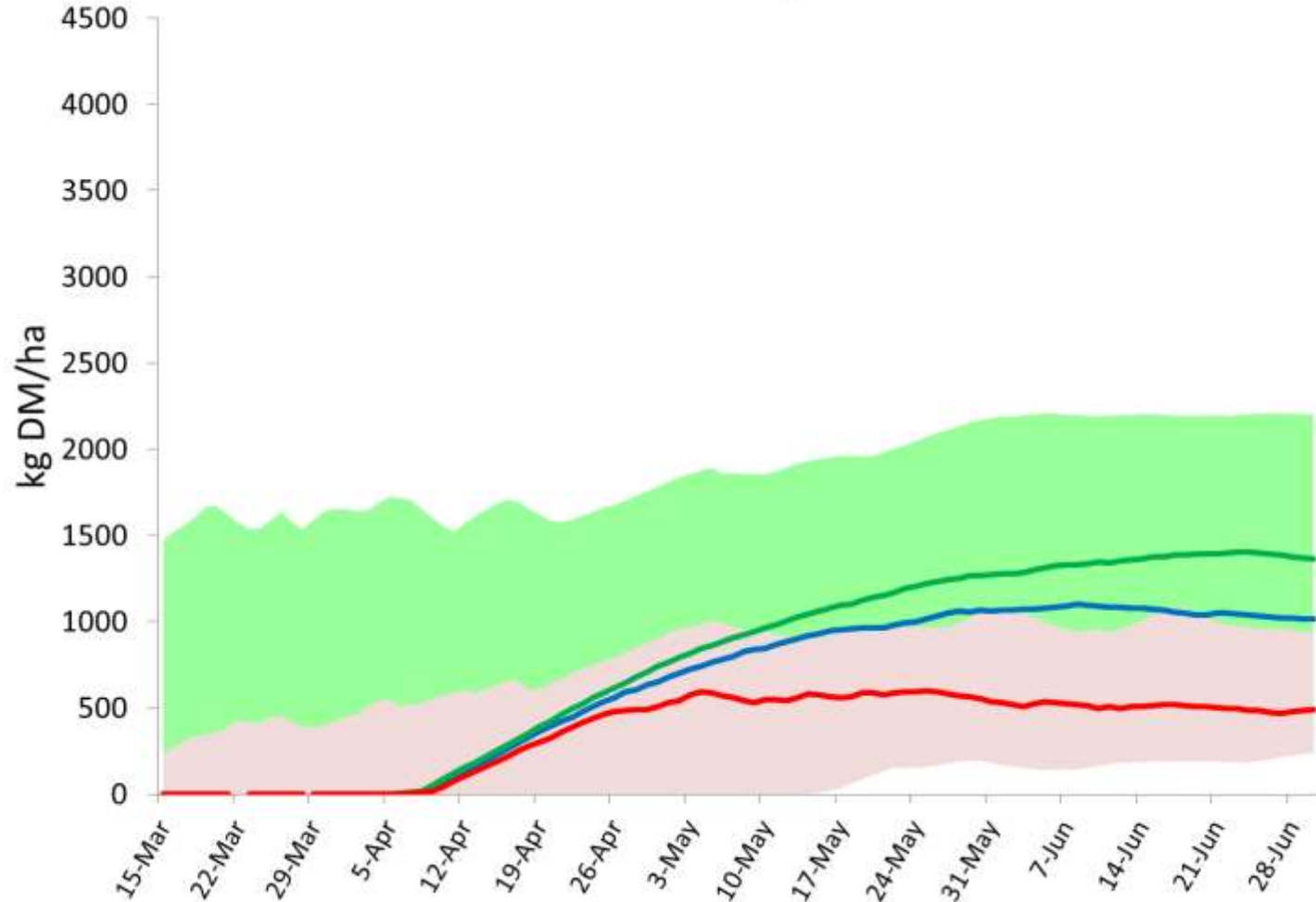
# Projections, *Green Herbage*

## Delegate



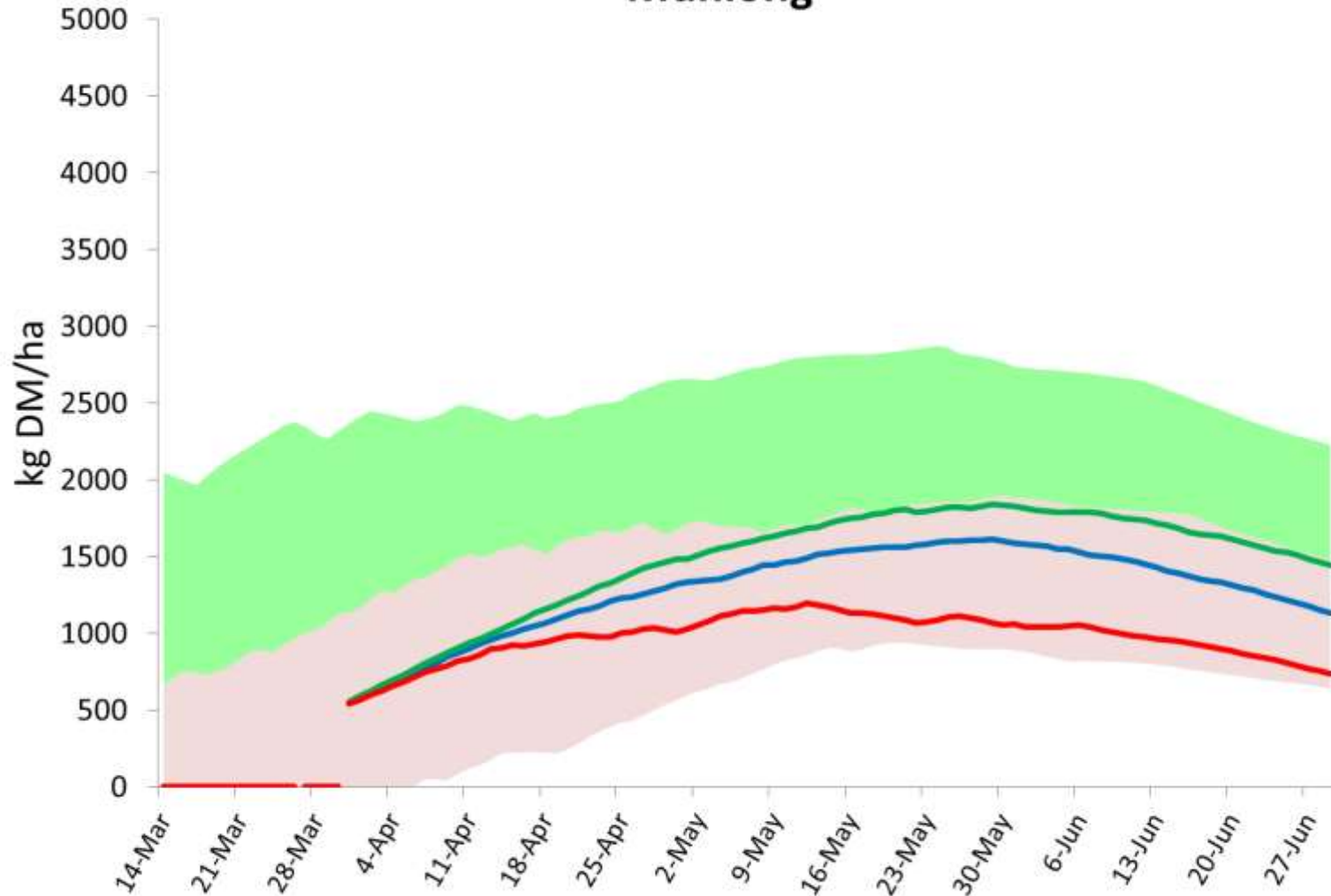
# Projections, *Green Herbage*

## Bukalong



# Projections, *Green Herbage*

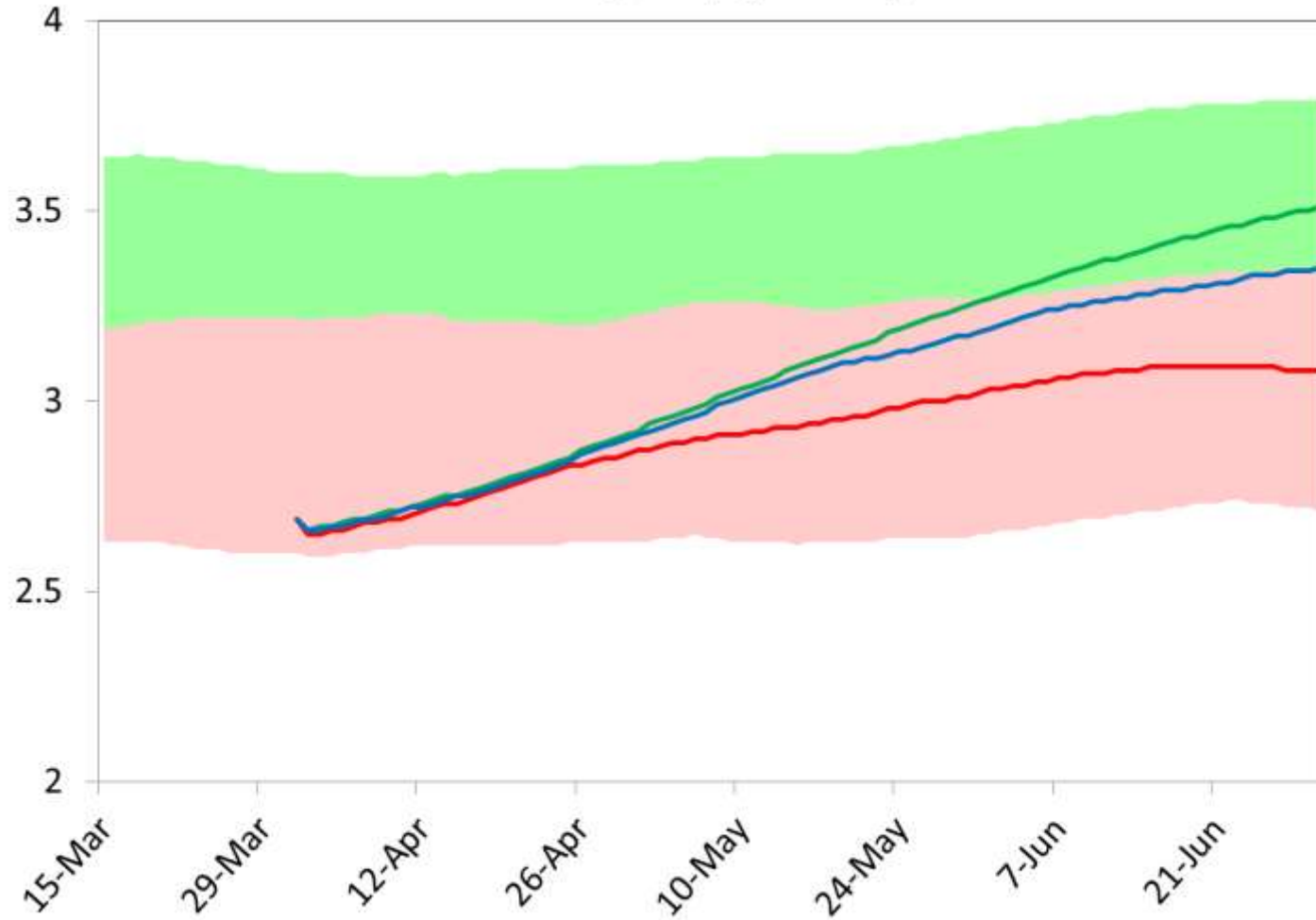
## Munionsg





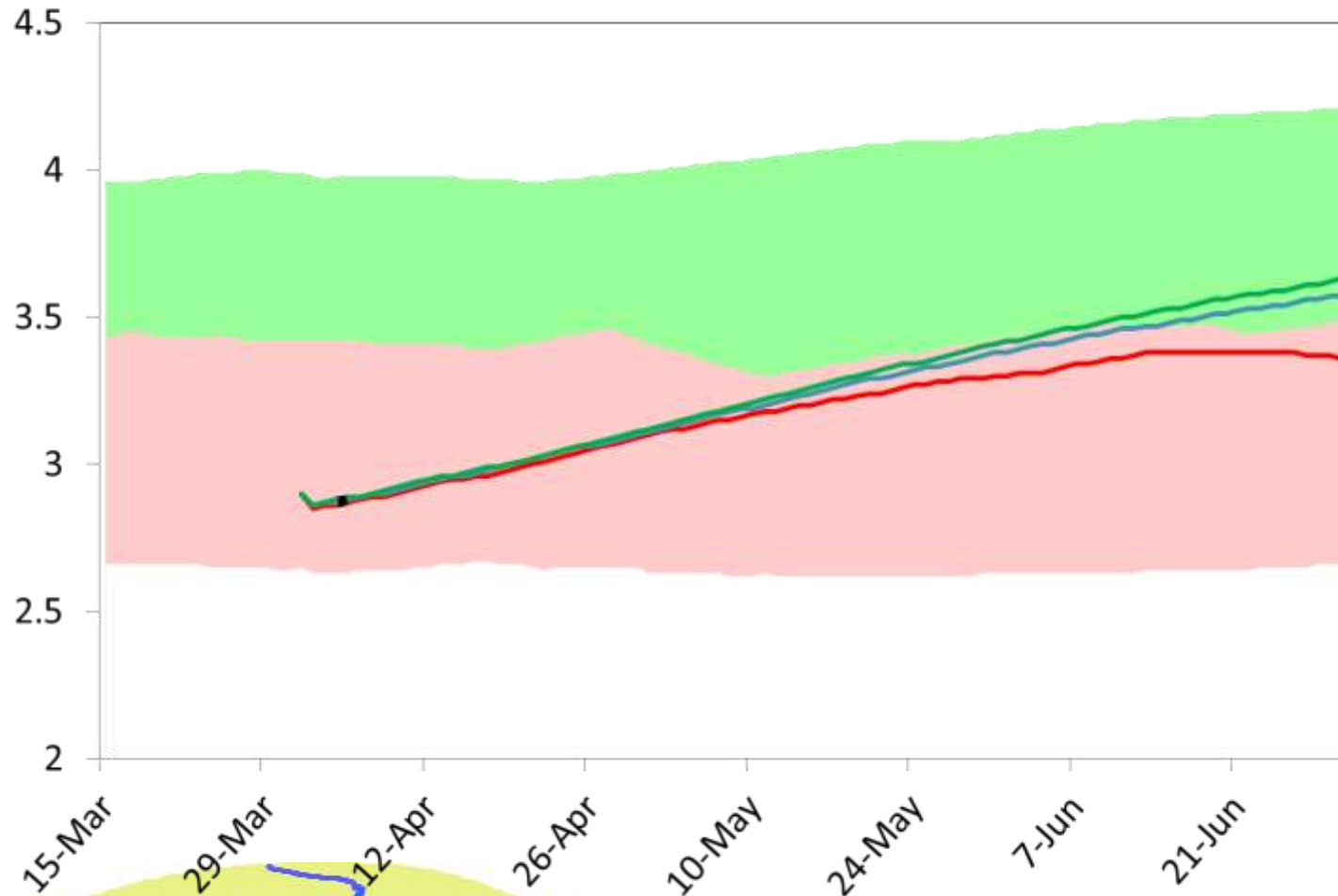
# Projections, *Ewe Condition Score*

Bungarby (Native)



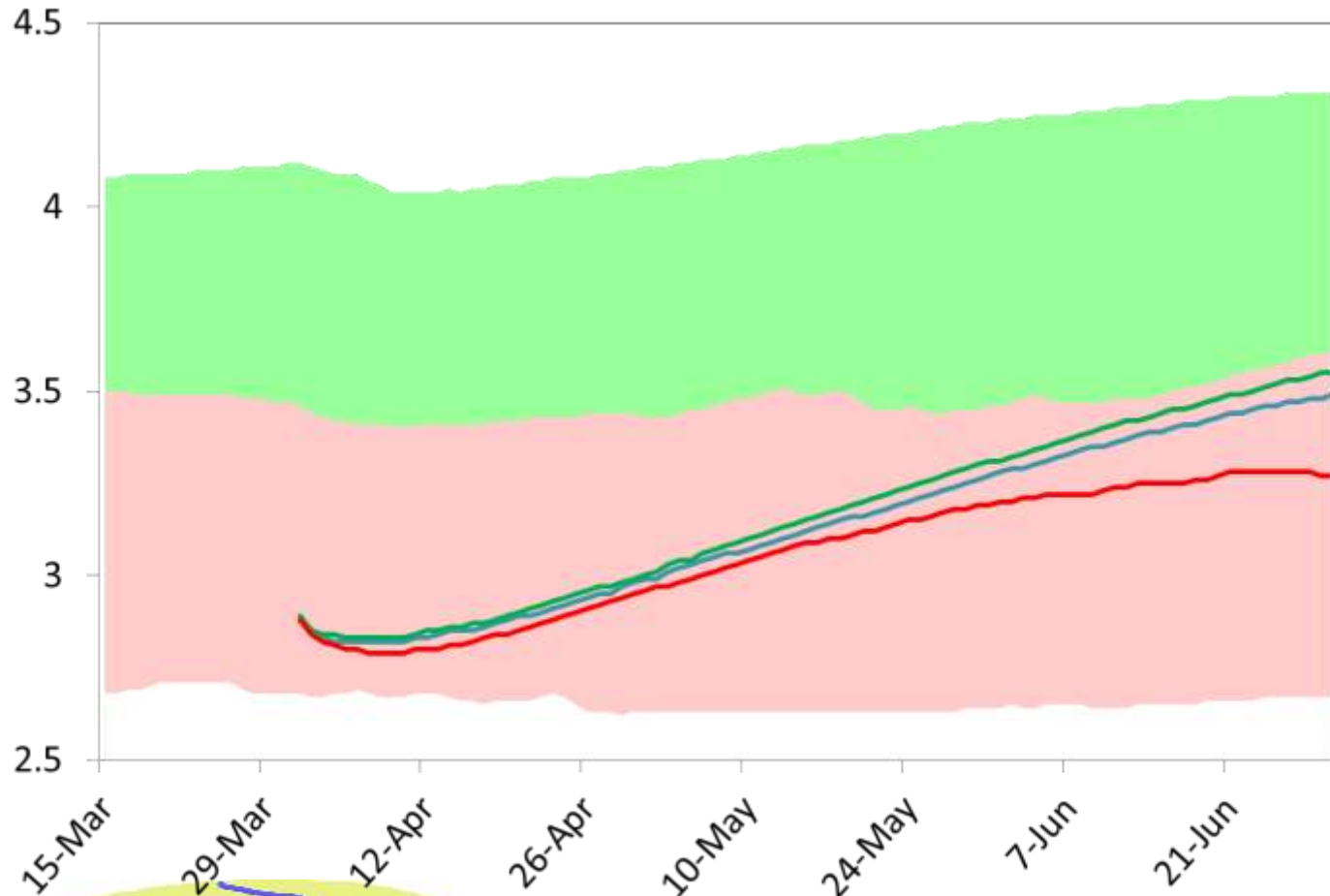


# Projections, *Ewe Condition Score* Bungarby (Improved)



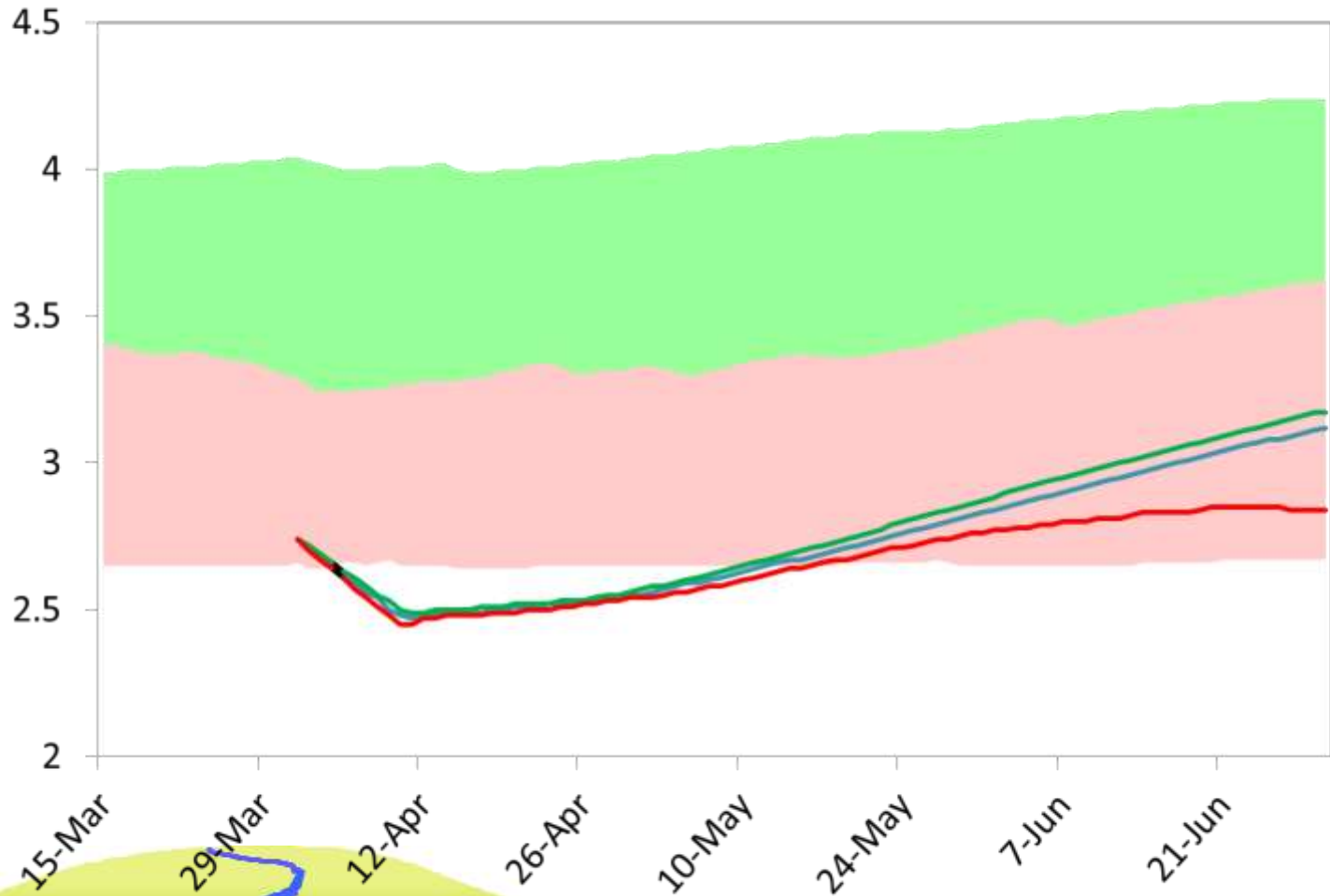
# Projections, *Ewe Condition Score*

Delegate



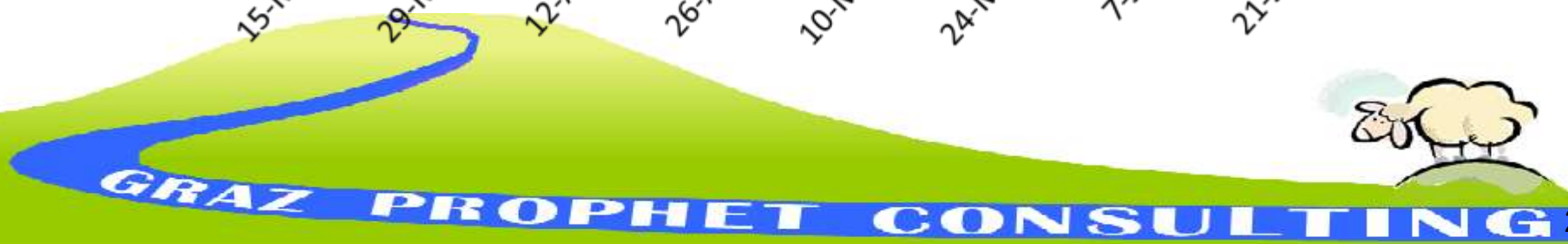
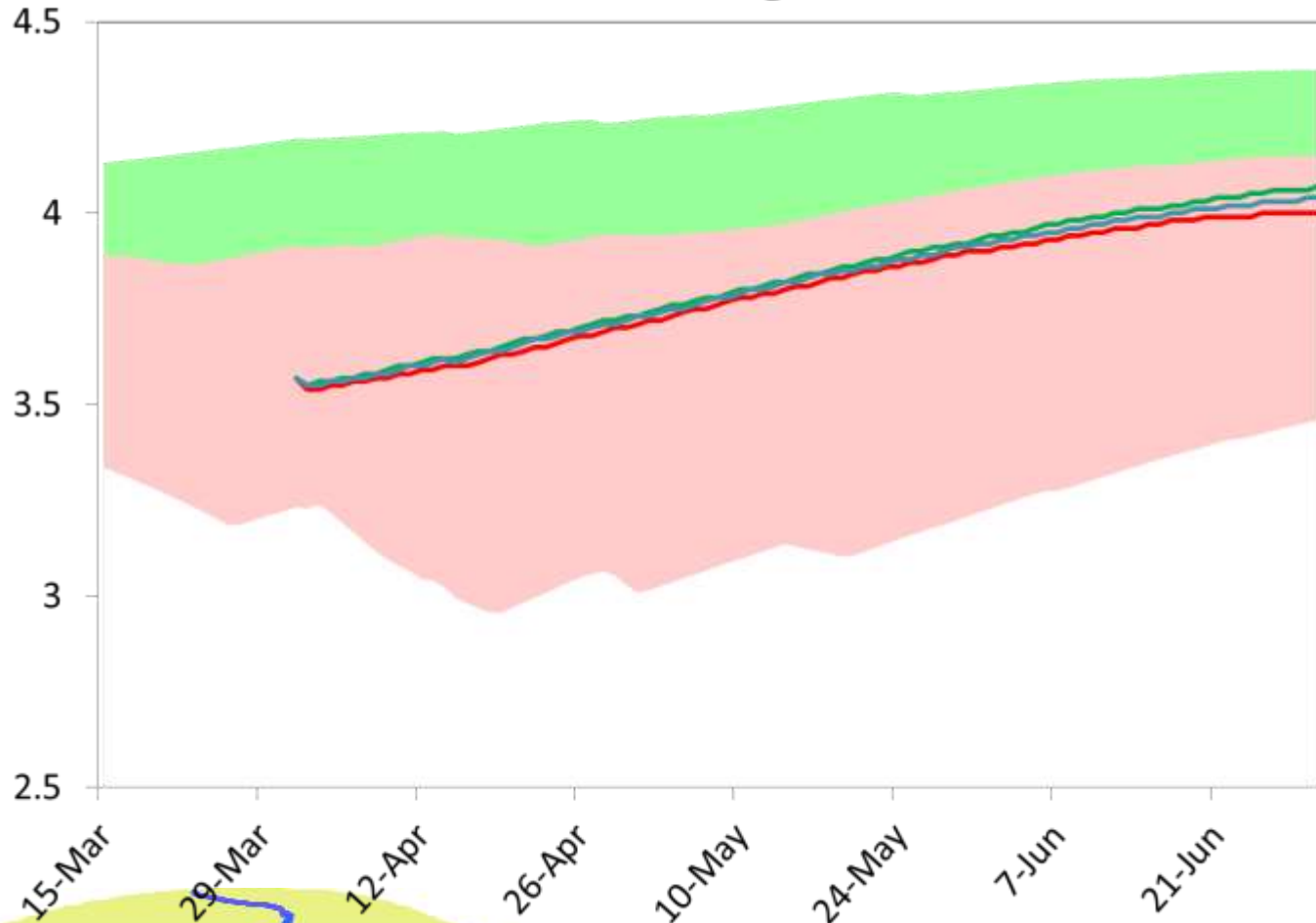
# Projections, *Ewe Condition Score*

## Bukalong

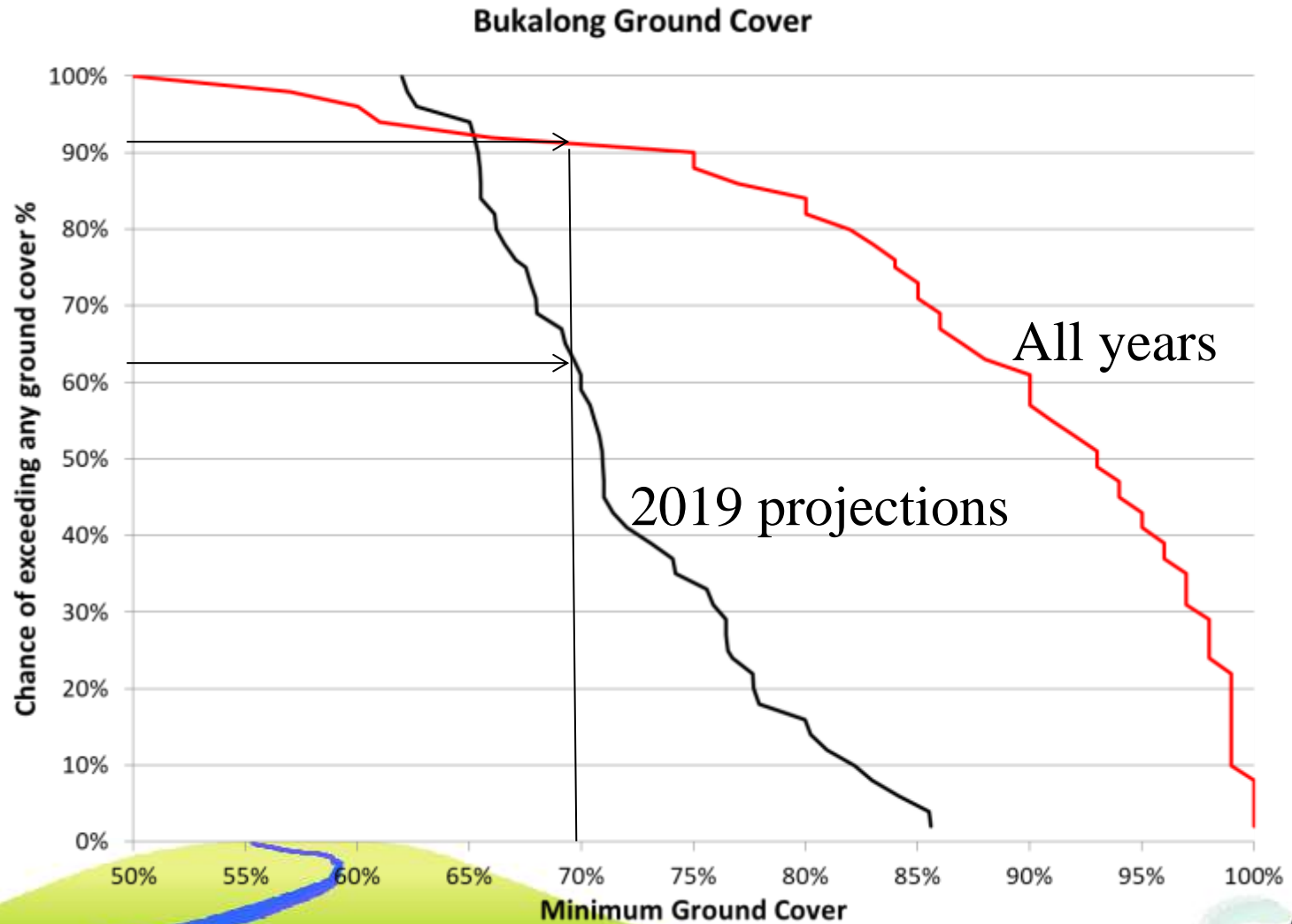


# Projections, *Ewe Condition Score*

## Muniong

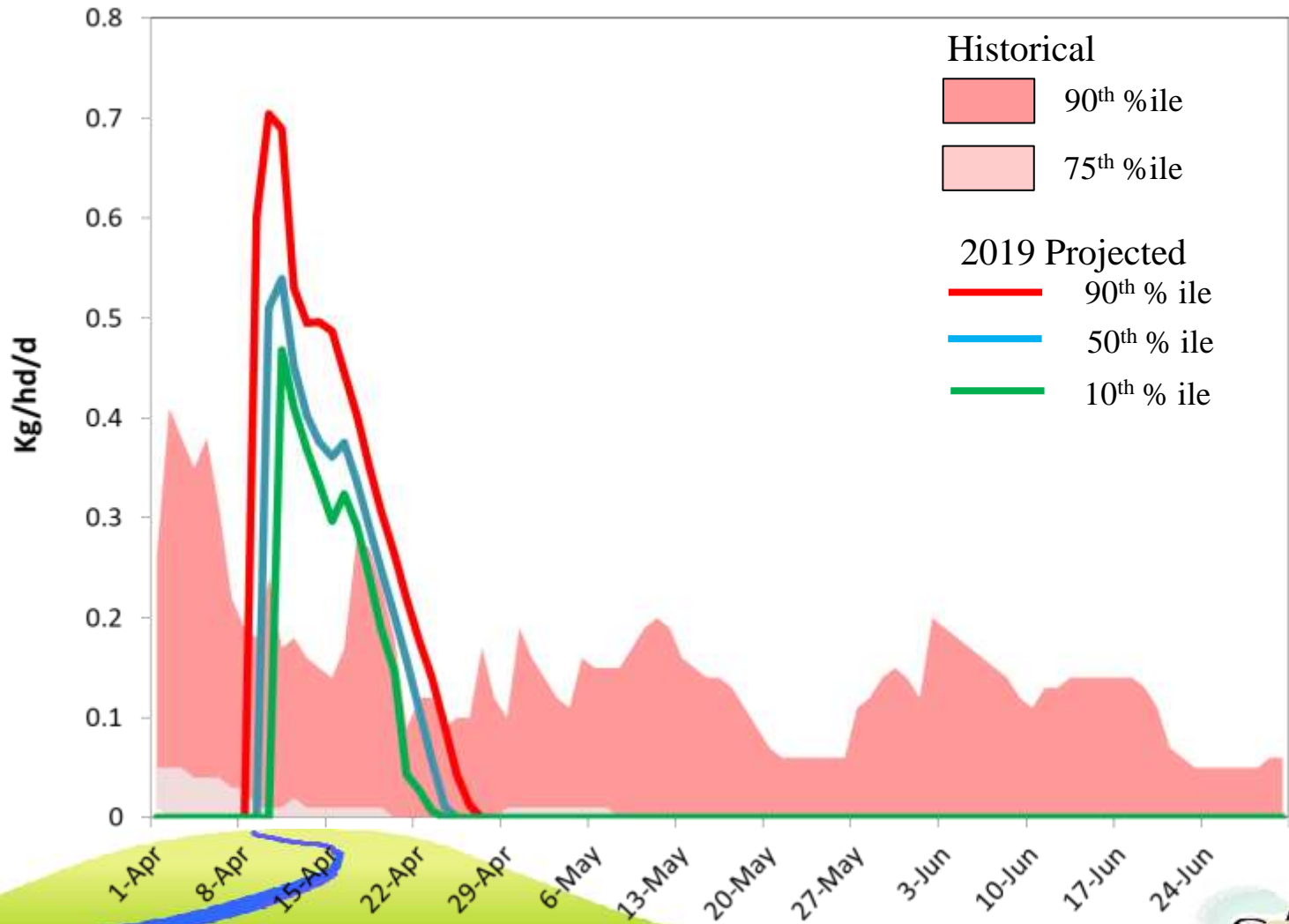


# Minimum Ground Cover Risks.



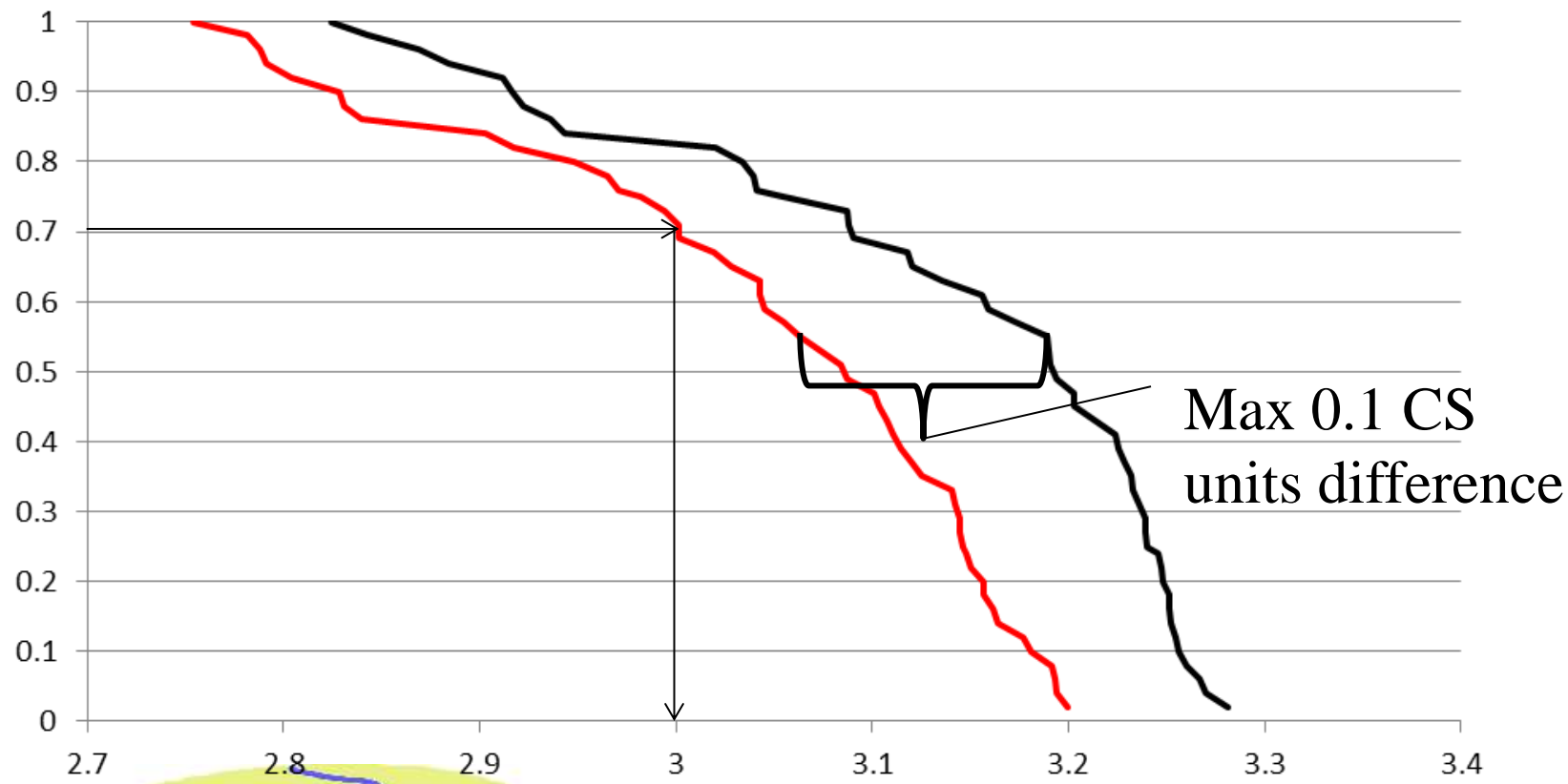
# Supplementary Feeding

Bukalong



# Impact of not feeding

## Bukalong Ewe CS on 30th June



— CS 2.5 — No feed





# Are you understocked this year?

- Many properties are down on stock numbers
- The modelling is for fully stocked systems
- Is there potential to profit from buying stock back in now



# Modelling approach

- Bungarby and Bukalong Modelled
- 12 month tactical runs
- Spun up with 17% lower numbers
  - Run 1 at carrying capacity.
  - Run 2 continuing at 17% reduced numbers

17% = to being down the oldest cohort.

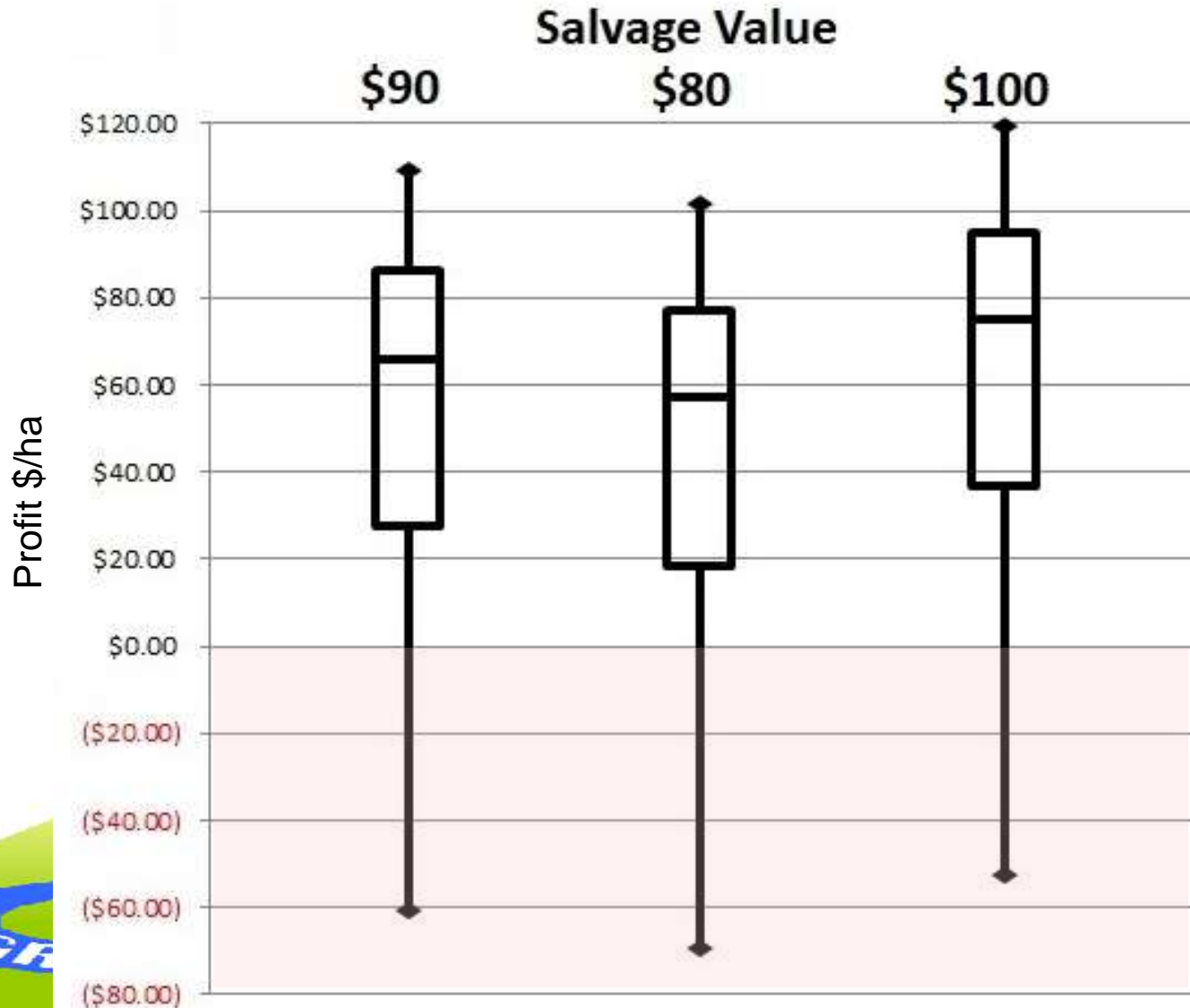


# Economics

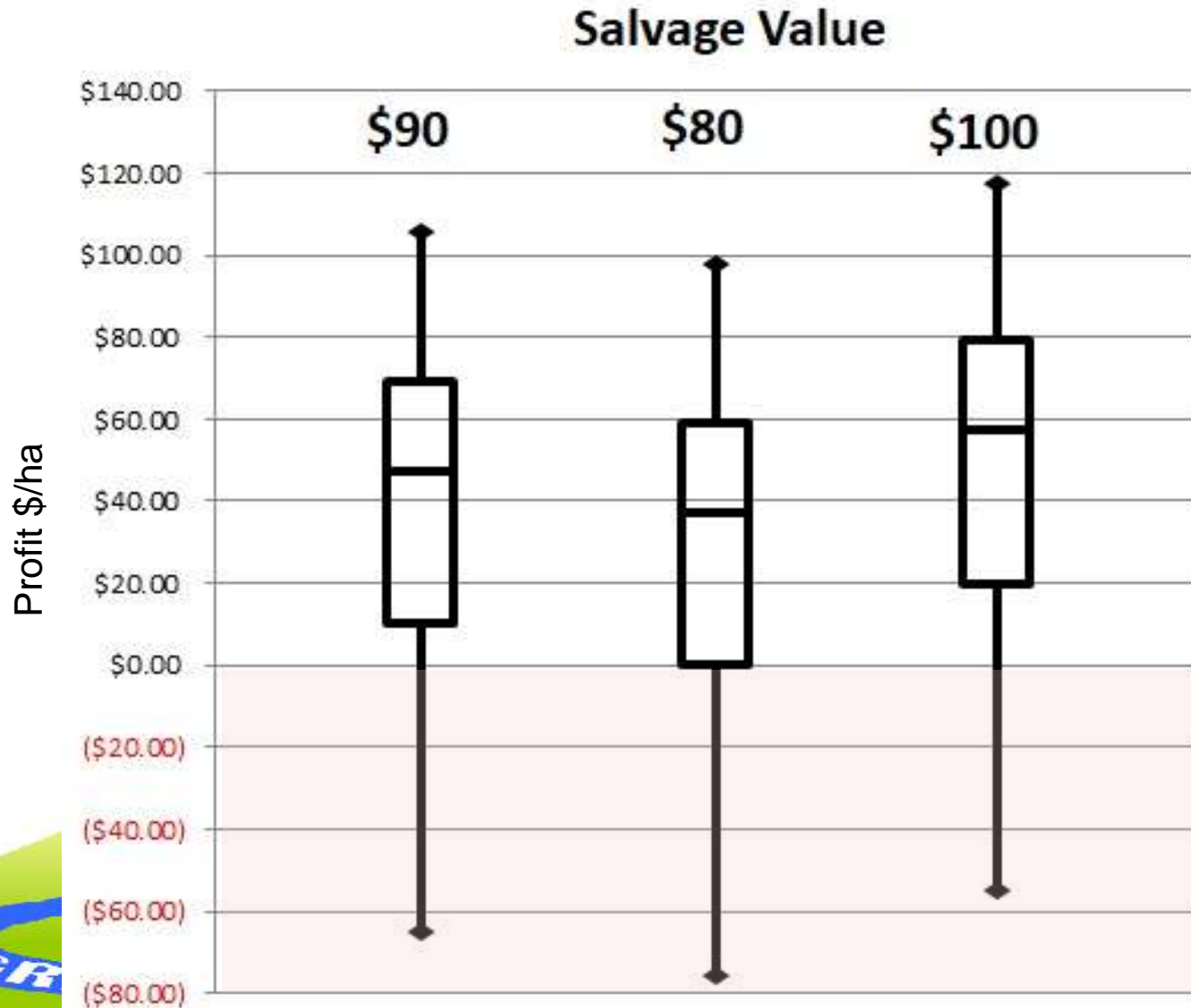
## Assumptions

- Current Costs and Prices
- Stock purchase price assumed to be \$130 (recent Auctions plus sales)
- Transport \$7/head
- Induction animal health \$2/head
- Finance costs @ 6%
- Salvage value \$80 - \$100

# Bungarby Trading Profit \$/ha



# Bukalong Trading Profit



# The cost of conservative stocking

- Often hard to know where the sweet spot is.  
so
- Many people stock conservatively



# Long term profit

## Two stocking rates at Bungarby (Improved)

